

644

FEB 12 2001

LIBER 340 PAGE 339

YEAR 2000 PRESQUE ISLE COUNTY, STATE OF MICHIGAN REMONUMENTATION SECTION

LAND CORNER RECORDATION CERTIFICATE  
Filing Requirement of Act 74, Mich. P.A. 1970

For corners in  
PRESQUE ISLE  
(County)

Located In: \_\_\_\_\_ Corner Code #/

|                                       |                          |           |
|---------------------------------------|--------------------------|-----------|
| 1. Public Land Survey                 | T <u>35N</u> R <u>2E</u> | <u>K5</u> |
|                                       | T <u>35N</u> R <u>2E</u> | <u>K6</u> |
|                                       | T _____ R _____          | _____     |
|                                       | T _____ R _____          | _____     |
| 2. Property Controlling<br>in Section | S _____ T _____ R _____  | _____     |
|                                       | S _____ T _____ R _____  | _____     |
| 3. Miscellaneous<br>Property in Sec.  | S _____ T _____ R _____  | _____     |
|                                       | S _____ T _____ R _____  | _____     |

PRESQUE ISLE COUNTY  
RECORDED

2000 DEC 11 AM 9:47

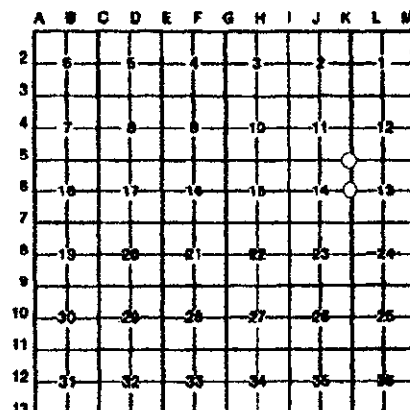
*Janet M. Jamb*  
REGISTER OF DEEDS

Register of Deeds Stamp & File Number

4. Lot No. \_\_\_\_\_, Recorded Plat \_\_\_\_\_  
5. Private Claims \_\_\_\_\_

I, James A. Beck, in a field survey on Sep 28 & Oct 3, 2000, do hereby certify that under requirements of P.A. 74, Michigan P.A. of 1970, the corner points mentioned in lines 1 and 2 above were in conformance with regulations and rules therefore as required in the current manual of survey instructions of the United States Department of the Interior, Bureau of Land Management or by a decree of a Court of Law and/or that the corner points mentioned in lines 3, 4 and 5 above were in conformance with the rules of the Michigan Board of Land Surveyors or by a Decree of a Court of Law; established, re-established, monumented, re-monumented, recovered, found as expressed below.

NOTE: Not more than 4 corners, all in the same town and range, may be recorded on this certificate.



A. Description of original monument and accessories and/or subsequent restoration:

|  |   |
|--|---|
| <b>K5</b> January 3, 1994 P.A. 74 (Land Corner Recordation)<br>Certificate by Ronald Biecher No. 22428<br>Concrete monument<br>S68°E 43.52' 12' Cedar<br>N2°E 28.38' 9' Balsam<br>N87°W 16.20' 4' Balsam<br>N60°W 74.70' P. Pole | <b>K6</b> October 12, 1974 P.A. 74 (Land Corner Recordation) Certificate<br>by Delmer Porter P.S. 15410<br>Axle shaft<br>West 32.89' fence corner<br>North 75' Cold Creek<br>N55°E 52.19' 10' Elm |
|--|---|

B. Description of corner evidence found and/or method applied in restoring or reestablishing corner:

|   |  |
|---|--|
| <b>K5</b> September 28, 2000 Remonumentation<br>found cement monument (1/2" iron rod in 4" cement cylinder) set P.S. 21559 cap on rod<br>S68°E 43.52' 12' Cedar<br>N2°E 28.38' 9' Balsam stump<br>N87°W 16.20' 5' Balsam<br>N60°W 74.70' power pole | <b>K6</b> October 3, 2000 Remonumentation by James A. Beck P.S. 21559<br>Found 1/2" iron rod, set P.S. 21559 cap<br>Witnesses<br>West 32.89' 15410 tag in 12" fence post<br>North 75' Cold Creek<br>N55°E 52.19' 10' Elm Stump |
|---|--|

Ratified by Peer Group  
in accordance with P.A. 345

Chairman *Norman J. Quinn*

Date 12/11/00

C. Description of monument for corner and accessories established to perpetuate locating the position of the corner:

|   |   |
|---|---|
| <b>K5</b> September 28, 2000 Remonumentation<br>cement monument (1/2" iron rod in 4" cement cylinder) set P.S. 21559 cap on rod<br>Witnesses:<br>S68°E 43.52' P.S. 22428 tag in 12" Cedar<br>N2°E 28.38' P.S. 22428 tag in 9" Balsam stump<br>N87°W 16.20' P.S. 22428 tag in 5" Balsam<br>N60°W 74.70' P.S. 22428 tag in power pole<br>N17°E 6.98' P.S. 21559 tag in 3" Spruce<br>Corner falls in wooded area East of North-South power line. | <b>K6</b> October 3, 2000 Remonumentation by James A. Beck P.S. 21559<br>1/2" iron rod and P.S. 21559 cap<br>Witnesses:<br>West 32.89' 15410 tag in 12" fence post<br>North 75' Cold Creek<br>N55°E 52.19' 10' Elm Stump<br>N51°W 72.47' P.S. 21559 tag in Nly stem 5" twin Maple<br>S43°E 53.41' P.S. 22428 tag in 5" Elm<br>N33°E 46.03' P.S. 21559 tag in 6" Elm<br>Corner falls in gravel roadway |
|---|---|

Signed by *James A. Beck*  
James A. Beck P.S. 21559  
Surveyor's Michigan License No. \_\_\_\_\_

Date Nov. 7, 2000

