

FEB 12 2001

SECTION 10

LAND CORNER RECORDATION CERTIFICATE  
Filing Requirement of Act 74, Mich. P.A. 1970

For corners in  
PRESQUE ISLE  
(County)

Located In:	Corner Code #:
T 36N R 2E	K5
T 36N R 2E	K6 ✓
T R	
T R	
S T R	
S T R	
S T R	
S T R	

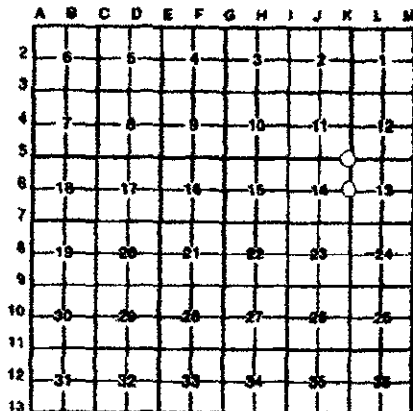
PRESQUE ISLE COUNTY  
RECORDED

2000 DEC 11 AM 9:47

*James M. Lamb*  
REGISTER OF DEEDS

Register of Deeds Stamp & File Number

4. Lot No. \_\_\_\_\_, Recorded Plat \_\_\_\_\_  
5. Private Claims \_\_\_\_\_



I, James A. Beck, in a field survey on Sep 28 & Oct 3, 2000, do hereby certify that under requirements of P.A. 74, Michigan P.A. of 1970, the corner points mentioned in lines 1 and 2 above were in conformance with regulations and rules therefore as required in the current manual of survey instructions of the United States Department of the Interior, Bureau of Land Management or by a decree of a Court of Law and/or that the corner points mentioned in lines 3, 4 and 5 above were in conformance with the rules of the Michigan Board of Land Surveyors or by a Decree of a Court of Law; established, re-established, monumented, re-monumented, recovered, found as expressed below:

NOTE: Not more than 4 corners, all in the same town and range, may be recorded on this certificate.

A. Description of original monument and accessories and/or subsequent restoration:

K5 January 3, 1994 P.A. 74 (Land Corner Recordation) Certificate by Ronald Biecher No. 22428  
Concrete monument  
S68°E 43.52' 12' Cedar  
N 2°E 28.38' 9' Balsam  
N87°W 16.20' 4' Balsam  
N60°W 74.70' P. Pole

K6 October 12, 1974 P.A. 74 (Land Corner Recordation) Certificate by Delmer Porter P.S. 15410  
Axe shaft  
West 32.89' fence corner  
North 75' Cold Creek  
N55°E 52.19' 10' Elm

B. Description of corner evidence found and/or method applied in restoring or reestablishing corner:

K5 September 28, 2000 Remonumentation found cement monument (1/2" iron rod in 4" cement cylinder) set P.S. 21559 cap on rod  
S68°E 43.52' 12' Cedar  
N2°E 28.38' 9' Balsam stump  
N87°W 16.20' 5' Balsam  
N60°W 74.70' power pole

K6 October 3, 2000 Remonumentation by James A. Beck P.S. 21559 Found 1/2" iron rod, set P.S. 21559 cap  
Witnesses  
West 32.89' 15410 tag in 12" fence post  
North 75' Cold Creek  
N55°E 52.19' 10' Elm Stump

Ratified by Peer Group  
in accordance with P.A. 345  
Chairman *Norman J. Quinn*  
Date 12/11/00

C. Description of monument for corner and accessories established to perpetuate locating the position of the corner:

K5 September 28, 2000 Remonumentation cement monument (1/2" iron rod in 4" cement cylinder) set P.S. 21559 cap on rod  
Witnesses:  
S68°E 43.52' P.S. 22428 tag in 12" Cedar  
N2°E 28.38' P.S. 22428 tag in 9" Balsam stump  
N87°W 16.20' P.S. 22428 tag in 5' Balsam  
N60°W 74.70' P.S. 22428 tag in power pole  
N17°E 6.96' P.S. 21559 tag in 3" Spruce  
Corner falls in wooded area East of North-South power line.

K6 October 3, 2000 Remonumentation by James A. Beck P.S. 21559 1/2" iron rod and P.S. 21559 cap  
Witnesses:  
West 32.89' 15410 tag in 12" fence post  
North 75' Cold Creek  
N55°E 52.19' 10' Elm Stump  
N51°W 72.47' P.S. 21559 tag in Nly stem 5" twin Maple  
S43°E 53.41' P.S. 22428 tag in 5' Elm  
N33°E 46.03' P.S. 21559 tag in 6" Elm  
Corner falls in gravel roadway

Signed by *James A. Beck*  
James A. Beck P.S. 21559  
Surveyor's Michigan License No. \_\_\_\_\_

Date Nov. 7, 2000

