

2000 PRESQUE ISLE COUNTY, STATE OF MICH. REMONUMENTATION  
LAND CORNER RECORDATION CERTIFICATE  
Filing Requirement of Act 74, Mich. P.A. 1970

2000 OCT 30 PH 3: 28

*Janet M. Lamb*  
REGISTER OF DEEDS

SURVEY &  
REMONUMENTATION

FEB 12 2001

SECTION  
Register of Deeds Stamp & File Number

or corners in

Presque Isle (County)	Located In:	Corner Code #
Public Land Survey	T 35N R 2E	M-9 ✓
	T 35N R 2E	M-10
Property Controlling in Section	T R	
	T R	
Miscellaneous Property in Sec.	S T R	
	S T R	

Lot No. \_\_\_\_\_, Recorded Plat \_\_\_\_\_  
Private Claims \_\_\_\_\_

Delmer E. Porter, in a field survey on 09/6/00, 19\_\_\_\_ do hereby state that under requirements of P.A. 74, Michigan P.A. of 1970, the corner points mentioned in lines 1 and 2 above were in conformance with regulations and rules therefore as required in the current manual of survey instructions of the United States Department of the Interior, Bureau of Land Management or by a decree of a Court of Law and /or that the corner points mentioned in lines 3, 4 and 5 above were in conformance with the rules of the Michigan Board of Land Surveyors or by a Decree of a Court of Law, established, re-established, monumented, covered, found as expressed below:

NOTE: Not more than 2 corners, all in the same town and range, may be recorded on this certificate.

	A	B	C	D	E	F	G	H	I	J	K	L	M
1													
2	6		5		4		3		2		1		
3													
4	7		8		9		10		11		12		
5													
6	18		17		16		15		14		13		
7													
8	19		20		21		22		23		24		
9													
10	30		29		28		27		26		25		
11													
12	31		32		33		34		35		36		
13													

Description of original monument and accessories and/or subsequent restoration:

M-9  
CONC MON/BRASS CAP  
N 26° E 14.50' 6" BALSAM  
S 42° E 39.64' 8" MAPLE  
S 16° W 104.33' 6" CEDAR

M-10  
CONC MON/BRASS CAP  
N 58° W 62.23' FE POST  
S 75° W 57.87' FE POST

Description of corner evidence found and/or method applied in restoring or reestablishing corner:

M-9  
FOUND CONC MON/BRASS CAP  
NO WITNESSES REMAINING



M-10  
FOUND CONC MON/BRASS CAP  
NO WITNESSES REMAINING

Ratified by Peer Group  
in accordance with P.A. 345

Chairman *Norman J. Quinn*

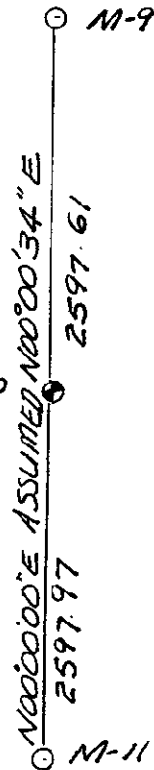
Date 10/27/00 M-10

Description of monument for corner and accessories established to perpetuate locating the position of the corner:

M-9  
CONC MON/BRASS CAP  
S 25° W 17.33' 17.33' 2" POPLAR  
N 60° W 3.62' 2" BIRCH  
N 61° E 9.70' 2" SPRUCE  
S 64° E 11.30' 2" POPLAR

M-10  
CONC MON/BRASS CAP  
UNABLE TO WITNESS - OPEN FIELD  
SEE SKETCH

\*WITNESS TAGS & NAILS USED.



Signed by *Delmer E. Porter*  
Surveyor's Michigan License No. 15410

Date 10/5/00