

MICHIGAN  
DEPARTMENT OF CONSERVATION  
FORESTRY DIVISION

# LAND CORNER RECORD

T. 21 N.R. 4 W

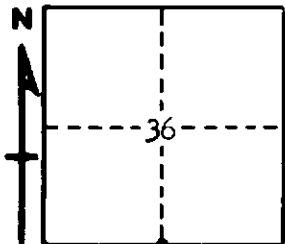
Roscommon COUNTY

DESCRIPTION OF CORNER 1/4 corner on S. side Section 36, T21N R4W

CORNER MONUMENT Set 1" pipe with 4" aluminum cap

DATE MONUMENT PLACED AND WITNESSED May 25, 1966

WITNESSES TO CORNER.....



CIRCLE CORNER REGISTERED

	10" Cedar	N 48 E	24.0'
Old NBT	8" Cedar	N 67 W	15.1'
Old NBT	7" Cedar	N 18 E	29.1'

AND

**DESCRIPTION IN DETAIL AS TO HOW CORNER WAS LOCATED AND IDENTIFIED OR RESTORED.**

This corner was found while making a survey of the 2nd correction line in this township.

Found old post at corner, as established in previous survey. One USBT stump in place showing good upper face, and 2 sixty-year-old NBTs. Very good original corner.

**SURVEYOR'S SEAL**

SIGNED *Kenneth Ostling* DATE June 7, 1966  
REGISTERED AND SURVEYOR #1006