

LAND CORNER RECORDATION CERTIFICATE

Filing Requirement of Act 74, Mich. PA 1970

For Corners In:
Roscommon _____ Located In _____ Corner Code # _____
(County)

1. Public Land Survey		T	21N	R	4W	B-11
		T		R		
2. Property Controlling in Section	S	31	T	21N	R	4W
	S		T		R	
3. Miscellaneous Property in Section	S		T		R	
	S		T		R	

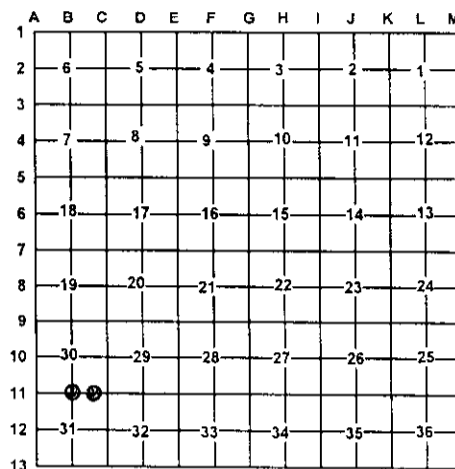
4. Lot No: _____ Recorded Plat: _____

5. Private Claims: _____

I, Carl T. Kiiskila, in a field survey on October 13, 2003 do hereby state that under requirements of PA 74, Michigan PA of 1970, the corner points mentioned in lines 1 and 2 above were in conformance with regulations and rules therefore as required in the current manual of survey instructions of the United States Department of the Interior, Bureau of Land Management or by a decree of a Court of Law and/or that the corner points mentioned in lines 3, 4 and 5 above were in conformance with the rules of the Michigan Board of Land Surveyors or by a Decree of a Court of Law; established, re-established, monumented, recovered, found as expressed below:

NOTE: Not more than 2 corners, all in the same town and range, may be recorded on this certificate.

Register of Deeds Stamp & File Number



A. Description of original monument and accessories and/or subsequent restoration:

B-11 G.L.O. Artemas Curtis April 1852 set quarter section post. Wit: W. Birch 8 N34.5°E 16 links
W. Pine 16 S45°W 39 links

2- This corner position was not established during the original government survey.

Marcus Schaaf R.L.S. #3104 index shows he set a monument for the quarter corner common to section 30 and 31.

B. Description of corner evidence found and/or method applies in restoring or re-establishing corner:

B-11 Found no evidence of Marcus Schaaf corner. Re-established the North quarter corner of section 31 on line between A-11 and C-11 prorated to U.S. run out.

2- Established the Northwest corner of the Northeast quarter of the Northeast quarter of section 31 as per B.L.M. instructions for the subdivision of a section.

C. Description of monument for corner and accessories established to perpetuate locating the position of the corner:

B-11 Set 1" X 48" pipe with standard DNR cap.
Wit: 5" Balsam N07°E 12.06'
10" Cedar S86°E 28.59'
13" W. Pine S16°W 43.42'
9" Cedar N82°W 24.92'
Carsonite Post North 1'±

2- Set 5/8" X 32" rerod with P.S. cap #33981
Wit: 5" Oak S58°E 22.17'
3" W. Pine S17°W 32.74'
8" Oak N85°W 35.85'
Centerline of E-W two track North 11.1'
Carsonite Post North 1'±

Signed by: _____

Carl T. Kiiskila

Date: _____

12-4-03

Surveyor's Michigan License No.: _____

33981

