

LAND CORNER RECORDATION CERTIFICATE
Filing Requirement of Act 74, Mich. PA 1970

For Corners In: Roscommon (County)		Located In	Corner Code #
1. Public Land Survey	T	22N R 2W	K-10
	T	22N R 2W	L-10
2. Property Controlling in Section	S	T	R
	S	T	R
3. Miscellaneous Property in Section	S	T	R
	S	T	R

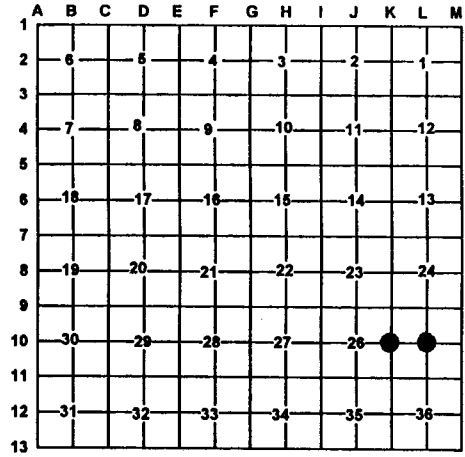
Register of Deeds Stamp & File Number

4. Lot No: _____ Recorded Plat: _____

5. Private Claims: _____

I, Carl T. Kiiskila, in a field survey on August 8, 1999 do hereby state that under requirements of PA 74, Michigan PA of 1970, the corner points mentioned in lines 1 and 2 above were in conformance with regulations and rules therefore as required in the current manual of survey instructions of the United States Department of the Interior, Bureau of Land Management or by a decree of a Court of Law and/or that the corner points mentioned in lines 3, 4 and 5 above were in conformance with the rules of the Michigan Board of Land Surveyors or by a Decree of a Court of Law; established, re-established, monumented, recovered, found as expressed below:

NOTE: Not more than 2 corners, all in the same town and range, may be recorded on this certificate.



A. Description of original monument and accessories and/or subsequent restoration:

K-10 GLO- William Burt DS 1852	L-10 This corner position was not established during the original government survey.
Wit: Spruce Pine 5 N31°E 9 Links	
Spruce Pine 5 S21°W 21 Links	

George Henning RLS #2240 Reestablished corner by single proportionate measurement c. 1970.

Larry Cavanagh RLS #17614, July 1978, tied to corner while doing a survey in the North half of section 25.
Wit: 8" B. Oak N25°E 37.5'
6" B. Oak S39°E 8.8'

B. Description of corner evidence found and/or method applies in restoring or re-establishing corner:

K-10 Found and accepted a 1/2" iron rod fitting G. Henning and Larry Cavanagh's surveys in section 25.	L-10 Found and accepted a 1/2" iron rod fitting G. Hennings and Larry Cavanagh's survey in section 25.
--	--

C. Description of monument for corner and accessories established to perpetuate locating the position of the corner:

K-10 Replaced 1/2" iron rod with standard DNR Monument	L-10 1/2" iron rod
Wit: *14" Oak S31°E 9.10'	Wit: 10" Jack Pine S65°E 26.67'
10" Oak S80°W 31.11'	3" Jack Pine S22°W 4.99'
4" Oak N21°W 42.62'	*10" Jack Pine N40°W 36.57'
9" Oak N68°E 40.02'	6" Jack Pine N34°E 14.23'
Carsonite Post North 1'	Carsonite Post North 1'
*Old witnesses by L. Cavanagh	*Old witnesses by others.

Signed by: Carl T. Kiiskila
Surveyor's Michigan License No.: 33981

Date: 9-8-99