

LAND CORNER RECORDATION CERTIFICATE

Filing Requirement of Act 74, Mich. PA 1970

For Corners In:
ROSCOMMON Located In _____ Corner Code # _____
 (County)

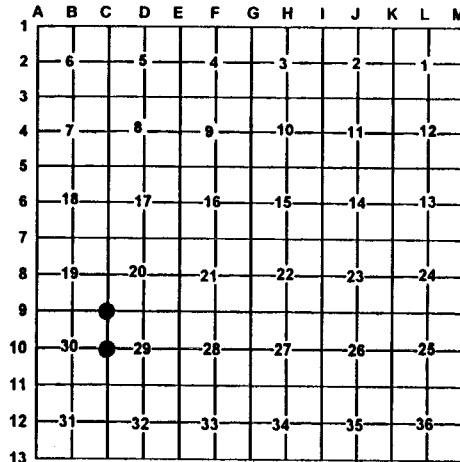
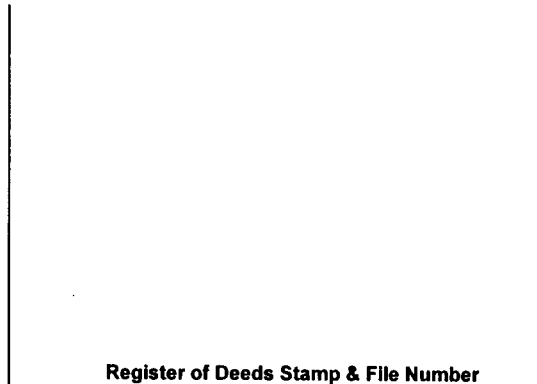
1. Public Land Survey		T	<u>22N</u>	R	<u>4W</u>	C-9
		T	<u>22N</u>	R	<u>4W</u>	C-10
2. Property Controlling in Section	S	T	R	R	R	R
	S	T	R	R	R	R
3. Miscellaneous Property in Section	S	T	R	R	R	R
	S	T	R	R	R	R

4. Lot No: _____ Recorded Plat: _____

5. Private Claims: _____

I, Carl T. Kiiskila, in a field survey on NOV. 1, 1998 do hereby state that under requirements of PA 74, Michigan PA of 1970, the corner points mentioned in lines 1 and 2 above were in conformance with regulations and rules therefore as required in the current manual of survey instructions of the United States Department of the Interior, Bureau of Land Management or by a decree of a Court of Law and/or that the corner points mentioned in lines 3, 4 and 5 above were in conformance with the rules of the Michigan Board of Land Surveyors or by a Decree of a Court of Law; established, re-established, monumented, recovered, found as expressed below:

NOTE: Not more than 2 corners, all in the same town and range, may be recorded on this certificate.



A. Description of original monument and accessories and/or subsequent restoration:

C-9 GLO - JULY 1852 - ARTEMUS CURTIS, D.S.
 SET POST CORNER OF SECTIONS 19,20,29, & 30.
 WIT: WHITE PINE 12" N21°E 17 LINKS
 WHITE PINE 15" S81°W 47 LINKS

C-10 GLO - JULY 1852 - ARTEMUS CURTIS, D.S.
 SET QUARTER SECTION POST.
 WIT: YELLOW PINE 12" N80°W 12 LINKS
 YELLOW PINE 16" S47°E 12 LINKS

GEORGE HENNING, R.L.S. # 2240, 1965 SHOWS SETTING A CONCRETE MONUMENT AT THE SOUTHEAST CORNER OF THE PLAT OF BARNEY LAKE NO.1 LIBER 5, PAGE 41.

GEORGE HENNING, R.L.S. # 2240, NO DATE, SET CORNER BY PROPORTIONATE MEASUREMENT.

B. Description of corner evidence found and/or method applies in restoring or re-establishing corner:

C-9 FOUND CONCRETE MONUMENT AS SET BY GEORGE HENNING, R.L.S. # 2240.

C-10 FOUND 1/2" ROD AS SET BY GEORGE HENNING, R.L.S. # 2240.

C. Description of monument for corner and accessories established to perpetuate locating the position of the corner:

C-9 FOUND CONCRETE MONUMENT.

WIT: * 10" WHITE PINE N66°W 11.85'
 * 10" OAK S07°E 22.83'
 * 10" OAK N11°W 34.35'
 5" WHITE PINE N50°E 16.84'
 CTR N-S ROAD WEST 33'

C-10 SET 1"X32" PIPE WITH ALUMINUM CAP OVER FOUND 1/2" ROD.

WIT: 8" RED PINE S15°W 5.93'
 13" OAK N59°W 46.45'
 11" OAK N50°E 28.70'
 12" OAK S88°E 21.59'

* OLD WITNESSES BY OTHERS

CORNER FALLS IN N-S FENCE LINE.

Signed by: _____

Carl T. Kiiskila

Date: _____

6-22-99

Surveyor's Michigan License No.: _____

33981

