

4549

APR 07 1998

STATE OF MICHIGAN
ROSCOMMON COUNTY
RECORDED

SECTION

10 JUL 97 2:14 P.M.

LAND CORNER RECORDATION CERTIFICATE

Filing Requirement of Act 74, Mich. P.A. 1970

For corners in Roscommon (County)	Located In:	Corner Code #
1. Public Land Survey	T <u>23N</u> R <u>2W</u>	<u>D-7</u>
	T _____ R _____	_____
	T _____ R _____	_____
	T _____ R _____	_____
2. Property Controlling in Section	S _____ T _____ R _____	_____
	S _____ T _____ R _____	_____
3. Miscellaneous Property in Section	S _____ T _____ R _____	_____
	S _____ T _____ R _____	_____

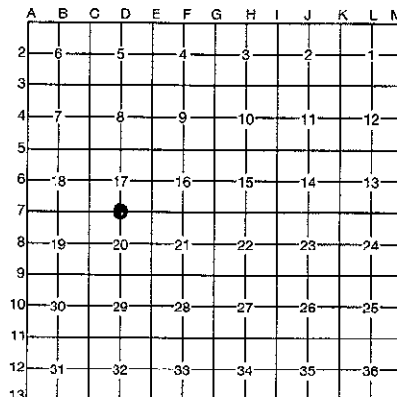
ROBERT W. SMITH
REGISTER OF DEEDS

FILE IN LIBER 3 OF LAND CORNERS
Register of Deeds Stamp & File Number

4. Lot No. _____, Recorded Plat _____
5. Private Claims _____

I, Marvin E. Myers, in a field survey on 2 June, 1997, do hereby certify that under requirements of P.A. 74, Michigan P.A. of 1970, the corner points mentioned in lines 1 and 2 above were in conformance with regulations and rules therefore as required in the current manual of survey instructions of the United States Department of the Interior, Bureau of Land Management or by a decree of a Court of Law and/or that the corner points mentioned in lines 3, 4 and 5 above were in conformance with the rules of the Michigan Board of Professional Surveyors or by a Decree of a Court of Law; established, re-established, monumented, re-monumented, recovered, found as expressed below:

NOTE: Not more than 4 corners, all in the same town and range, may be recorded on this certificate.



A. Description of original monument and accessories and/or subsequent restoration:

GLO - John Brink 1852 Mon. - Post WIT: 30" W. Pine N53°W 22 lks. 30" W. Pine S62°E 36 lks.	DNR - Schaaf - 1935± Mon. - Found or established, and replaced	August 18, 1945 G. D. Henning Mon- Found pipe Wit- 30" W. Pine Stump (Marks plainly) N53°W 22 Lks. 30" W. Pine Stump (Marks plainly) S62°E 36 Lks.
DNR - Kenneh Ostling 8/28/59 Mon. - Found Schaaf pipe set Conservation Dept. pipe and cap WIT: 5" Birch N25°E 28 1/2 lks. 7" Birch S32°W 38 lks.	C. Eugene Ostling P.S. #12026 Nov. 6, 1976 Liber 326 Page 227 Mon. - DNR MON. WIT: None provided	

B. Description of corner evidence found and/or method applied in restoring or reestablishing corner:

Found Conservation Dept. Pipe and Cap. Accepted as a perpetuation of the Original Government Corner.

ROSCOMMON COUNTY
PEER GROUP APPROVAL

DATE July 8, 1997

Marvin E. Myers
Marvin E. Myers, P.S.
County Surveyor

C. Description of monument for corner and accessories established to perpetuate locating the position of the corner:

Mon. - Conservation Dept. pipe and cap.
WIT: Spike S. side 4" Oak N83°E 24.42'
Spike S. side 4" Oak S89°E 22.41'
Spike NW. side 2" Maple S53°W 16.96'
Spike N. side 3" Maple N76°W 37.16'
Set Garsonite Post N. 0.73'



Signed by Marvin E. Myers

Date July 9, 1997

Surveyor's Michigan License No. 31600

FORM APPROVED BY MICHIGAN STATE BOARD OF PROFESSIONAL SURVEYORS, JAN. 28, 1971
REVISED MAY 14, 1975
REVISED JAN., 1983