

4550

SURVEY & REMONUMENTATION

APR 07 1998

LAND CORNER RECORDATION CERTIFICATE
Filing Requirement of Act 74, Mich. P.A. 1970

For corners in Roscommon (County) Located In: Corner Code #
1. Public Land Survey T 23N R 2W E-7
2. Property Controlling in Section S T R
3. Miscellaneous Property in Section S T R

4. Lot No. , Recorded Plat
5. Private Claims

I, Marvin E. Myers, in a field survey on 2 June, 1997, do hereby certify that under requirements of P.A. 74, Michigan P.A. of 1970, the corner points mentioned in lines 1 and 2 above were in conformance with regulations and rules therefore as required in the current manual of survey instructions of the United States Department of the Interior, Bureau of Land Management or by a decree of a Court of Law and/or that the corner points mentioned in lines 3, 4 and 5 above were in conformance with the rules of the Michigan Board of Professional Surveyors or by a Decree of a Court of Law; established, re-established, monumented, re-monumented, recovered, found as expressed below:

NOTE: Not more than 4 corners, all in the same town and range, may be recorded on this certificate.

A. Description of original monument and accessories and/or subsequent restoration:

GLO - John Brink 1852
Mon. - Post
WIT: 10" W. Birch N87 1/2°W 6.48 lks.
5" Tamarack S55°W 1.30 lks.
DNR - Schaaf - 1935±
Mon. -
Found or established, and replaced

B. Description of corner evidence found and/or method applied in restoring or reestablishing corner:

Found Wood post with 1 1/2" pipe (typical Schaaf Monument) driven through the center of the post in 2' of water. Found stump S50°W 0.80' below water surface. Verified position by measurement to accessories and accepted as a perpetuation of the Original Government Corner. Left pipe and post in place and raised corner with 3/4"x5' pipe with cap marked "MEM 31600"

C. Description of monument for corner and accessories established to perpetuate locating the position of the corner:

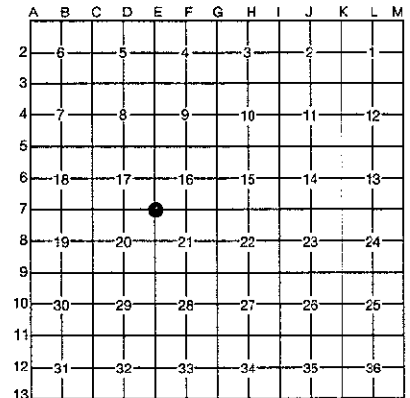
Mon. - 3/4" x 5' steel pipe painted orange with cap #31600
WIT: nail and tag E. side 3" Tamarack N06°E 60.65'
nail and tag S. side 4" post painted orange West 1.4'
Spike S. side 2" Tamarack N82°E 77.40'
Spike W side 4" Tamarack S48°E 67.80'

STATE OF MICHIGAN SECTION
ROSCOMMON COUNTY
RECORDED

10 JUL 97 2:14 P.M.

ROBERT W. SMITH
REGISTER OF DEEDS

FILE IN LIBER 3 OF LAND CORNERS
Register of Deeds Stamp & File Number



ROSCOMMON COUNTY
PEER GROUP APPROVAL
DATE July 8, 1997

Marvin E. Myers M.E.S.
Marvin E. Myers, P.S.
County Surveyor

Signed by Marvin E. Myers
Surveyor's Michigan License No. 31600

Date July 9, 1997



FORM APPROVED BY MICHIGAN STATE BOARD OF PROFESSIONAL SURVEYORS, JAN. 28, 1971
REVISED MAY 14, 1975
REVISED JAN, 1983

LIBER 3 PAGE 405