

**LAND CORNER RECORDATION CERTIFICATE**  
**Filing Requirement of Act 74, Mich. P.A. 1970**

For corners in

<u>Roscommon</u> (County)	Located In:	Corner Code <i>##</i>
1. Public Land Survey	T <u>23</u> R <u>3W</u>	<u>K-5</u>
	T <u>23</u> R <u>3W</u>	<u>K-6</u>
	T _____ R _____	_____
	T _____ R _____	_____
2. Property Controlling in Section	S <u>13</u> T <u>23</u> R <u>3W</u>	<u>10</u>
	S <u>13</u> T <u>23</u> R <u>3W</u>	<u>15</u>
3. Miscellaneous Property in Sec.	S _____ T _____ R _____	_____
	S _____ T _____ R _____	_____

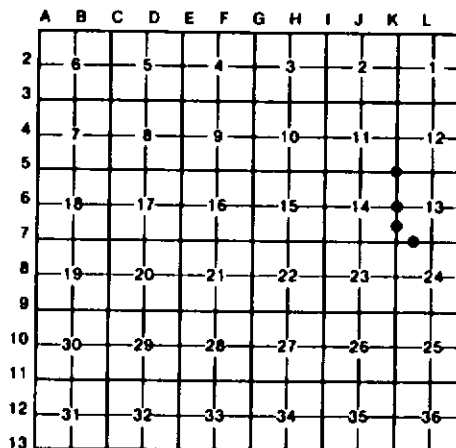
Register of Deeds Stamp & File Number

4. Lot No. \_\_\_\_\_, Recorded Plat \_\_\_\_\_  
 5. Private Claims \_\_\_\_\_

I, Carl Johnson, in a field survey on September 12, 19 91, do hereby certify that under requirements of P.A. 74, Michigan P.A. of 1970, the corner points mentioned in lines 1 and 2 above were in conformance with regulations and rules therefore as required in the current manual of survey instructions of the United States Department of the Interior, Bureau of Land Management or by a decree of a Court of Law and/or that the corner points mentioned in lines 3, 4 and 5 above were in conformance with the rules of the Michigan Board of Land Surveyors or by a Decree of a Court of Law, established, re-established, monumented, re-monumented, recovered, found as expressed below:

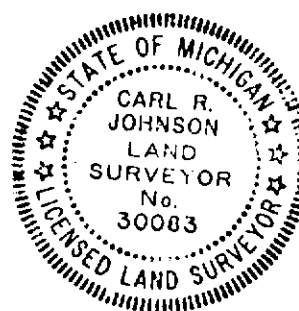
**NOTE: Not more than 4 corners, all in the same town and range, may be recorded on this certificate.**

A. Description of original monument and accessories and/or subsequent restoration:



B. Description of corner evidence found and/or method applied in restoring or reestablishing corner:

- K-5 - Set by double proportionate measurement between corners one mile east and west, and 1/2 mile north and south.
- K-6 - Found old post point and possible original BT SE. Presumed to be same point used in Henning Survey of 1955.
- 10 - Set by standard survey procedure for subdivision of a section.
- 15 - Set by standard survey procedure for subdivision of a section.



C. Description of monument for corner and accessories established to perpetuate locating the position of the corner:

<u>K-5: NW Corner Sec 13</u>	<u>K-6: W 1/4 Corner Sec 13</u>	<u>10: S 1/8 Corner on W Line Sec 13</u>	<u>15: W 1/8 Corner on S Line</u>
DNR mon & Cedar post	Set DNR mon & Cedar post	5/8" Rerod w/cap & Cedar post	Set 5/8" Rerod w/cap & Cedar
Maple 16" S08°W 22.5'	White Birch 14" S26°W 27.2'	Jack Pine 20" S05°E 12.7'	White Birch 10" N04°W 14.9'
Maple 9" N88°W 28.6'	Cedar 8" S26°E 25.8'	Jack Pine 6" N63°W 9.7'	Maple 6" N32°W 48.5'
Cedar 8" N06°W 13.8'	Cedar 10" N36°W 18.8'	Jack Pine 6" N14°E 23.5'	White Birch 12" N70°W 36.4'
Cedar 8" N45°E 23.1'	Cedar 7" N58°E 29.1'	Jack Pine 10" S88°E 16.2'	DNR cutting to south & east
Upper & Lower blazes w/scribes	Cedar 8" N56°W 1.0'	Nails & Brass tags	Upper & lower blazes w/scri
		Upper blaze	
		Gate post S25°W 47.0'	

Signed by Carl Johnson Date 1/28/92  
 Surveyor's Michigan License No. 30083