

LAND CORNER RECORDATION CERTIFICATE
Filing Requirement of Act 74, Mich. P.A. 1970

For corners in

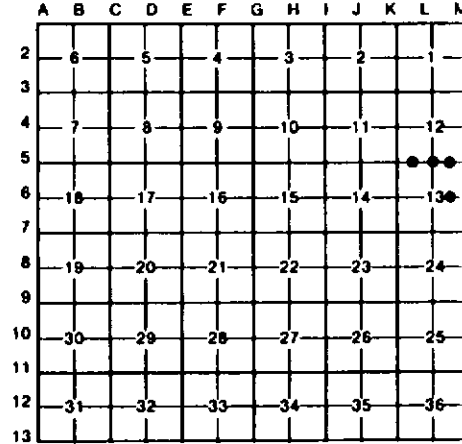
| | | |
|--|-------------------------------------|------------------------|
| <u>Roscommon</u> <small>(County)</small> | Located In: | Corner Code <u>L-5</u> |
| 1. Public Land Survey | T <u>23</u> R <u>3W</u> | <u>L-5</u> |
| | T _____ R _____ | _____ |
| | T _____ R _____ | _____ |
| | T _____ R _____ | _____ |
| 2. Property Controlling in Section | S <u>13</u> T <u>23</u> R <u>3W</u> | <u>1</u> |
| | S <u>13</u> T <u>23</u> R <u>3W</u> | <u>2</u> |
| 3. Miscellaneous Property in Sec. | S <u>13</u> T <u>23</u> R <u>3W</u> | <u>9</u> |
| | S _____ T _____ R _____ | _____ |

Register of Deeds Stamp & File Number

4. Lot No. _____, Recorded Plat _____
 5. Private Claims _____

I, Carl Johnson, in a field survey on September 9, 1991, do hereby certify that under requirements of P.A. 74, Michigan P.A. of 1970, the corner points mentioned in lines 1 and 2 above were in conformance with regulations and rules therefore as required in the current manual of survey instructions of the United States Department of the Interior, Bureau of Land Management or by a decree of a Court of Law and/or that the corner points mentioned in lines 3, 4 and 5 above were in conformance with the rules of the Michigan Board of Land Surveyors or by a Decree of a Court of Law; established, re-established, monumented, re-monumented, recovered, found as expressed below:

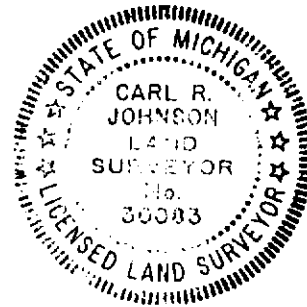
NOTE: Not more than 4 corners, all in the same town and range, may be recorded on this certificate.



A. Description of original monument and accessories and/or subsequent restoration:

B. Description of corner evidence found and/or method applied in restoring or reestablishing corner:

- L-5 - Set midway and on line between section corners.
- 1 - Set by standard survey procedure for subdivision of a section.
- 2 - Set by standard survey procedure for subdivision of a section.
- 9 - Set by standard survey procedure for subdivision of a section.



C. Description of monument for corner and accessories established to perpetuate locating the position of the corner:

- | | | |
|---------------------------------|--|---|
| <u>L-5: N 1/4 Corner Sec 13</u> | <u>1: W 1/8 on North Line Sec 13</u> | <u>2: E 1/8 Corner on North Line Sec 13</u> |
| DNR mon & Cedar post | 5/8" Rerod w/cap & Cedar post | Set 5/8" Rerod w/cap & Cedar post |
| Cherry 6" S01°E 15.85' | Aspen 10" S07°W 30.5' | White Pine 8" S41°E 55.9' |
| Oak 4" S84°W 38.92' | Maple 10" S50°W 28.8' | White Pine 6" S09°W 16.3' |
| Cherry 4" N68°W 34.35' | Maple 10" N02°W 31.2' | Cherry 8" N52°W 38.4' |
| Cherry 6" N10°E 53.20' | Upper & Lower blazes w/scribes | Upper & Lower blazes w/scribes |
| Upper & Lower blazes w/scribes | <u>9: E 1/8 Corner on E-W 1/4 Line</u> | Oak 36" N08°E 50.0' |
| | 5/8" Rerod w/cap & Cedar post | Nail & tag |
| | Oak 8" N30°E 23.4' | Pipe 1" N12°E 11.6' |
| | Oak 10" N68°W 28.6' | |
| | Oak 12" S27°W 17.5' | |
| | Oak 8" S15°E 35.0' | |
| | Lower Blazes & scribes | |

Signed by Carl Johnson Date 1/28/92

Surveyor's Michigan License No. 30083