

# LAND CORNER RECORDATION CERTIFICATE

Filing Requirement of Act 74, Mich. PA 1970

For Corners In:  
Roscommon Located In \_\_\_\_\_ Corner Code # \_\_\_\_\_  
 (County)

1. Public Land Survey	T	<u>23N</u>	R	<u>3W</u>	<u>G-2</u>
	T	<u>23N</u>	R	<u>3W</u>	<u>H-2</u>
2. Property Controlling in Section	S	_____	T	_____	_____
	S	_____	T	_____	_____
3. Miscellaneous Property in Section	S	_____	T	_____	_____
	S	_____	T	_____	_____

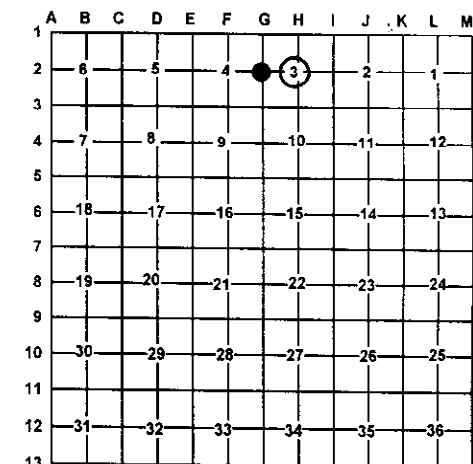
4. Lot No: \_\_\_\_\_ Recorded Plat: \_\_\_\_\_

5. Private Claims: \_\_\_\_\_

I, Carl T. Kiiskila, in a field survey on June 5, 2002 do hereby state that under requirements of PA 74, Michigan PA of 1970, the corner points mentioned in lines 1 and 2 above were in conformance with regulations and rules therefore as required in the current manual of survey instructions of the United States Department of the Interior, Bureau of Land Management or by a decree of a Court of Law and/or that the corner points mentioned in lines 3, 4 and 5 above were in conformance with the rules of the Michigan Board of Land Surveyors or by a Decree of a Court of Law; established, re-established, monumented, recovered, found as expressed below:

**NOTE: Not more than 2 corners, all in the same town and range, may be recorded on this certificate.**

Register of Deeds Stamp & File Number



**A. Description of original monument and accessories and/or subsequent restoration:**

G-2 G.L.O. Set post, Artemas Curtis 1852.  
 Wit: Y. Pine 8" N65°W 17 links  
 Y. Pine 8" S30°E 22 links

H-2 March 1992 (Carl R. Johnson R.L.S. #30083)  
 set DNR monument at the intersection of quarter lines.  
 Wit: Double Oak 24" N87°E 28.10'  
 W. Pine 5" S27°E 60.75'  
 R. Oak 6" S33°W 81.23'  
 Cedar Post East 8.5'

Liber 1, Page 136 (Larry Cavanagh P.S. #17614 November 1977) set 1/2" X 18" steel bar.  
 Wit: 12" Maple (clump) S45°E 13.73'  
 18" Twin Oak N40°E 36.48'

**B. Description of corner evidence found and/or method applies in restoring or re-establishing corner:**

G-2 Found 1/2" Bar H-2 Found DNR monument

**C. Description of monument for corner and accessories established to perpetuate locating the position of the corner:**

G-2 Set DNR monument  
 Wit: 3" White Pine S70°W 8.00'  
 3" White Pine N04°W 5.60'  
 6" Maple S72°E 18.54'  
 16" Maple N72°E 14.30'  
 12" Maple S45°E 13.80'  
 Carsonite Post North 1±

H-2 Found DNR monument  
 Wit: 30" Oak N85°E 28.09'  
 6" White Pine S28°E 60.84'  
 4" Elm S54°W 76.12'  
 36" Oak N50°W 69.30'

Signed by: Carl T. Kiiskila  
 Surveyor's Michigan License No.: 33981

Date: 7-22-02

