

**SURVEY &
REMONUMENTATION**

APR 07 1998

SECTION

9395

**LAND CORNER RECORDATION CERTIFICATE
Filing Requirement of Act 74, Mich. P.A. 1970**

For corners in

<u>Roscommon</u> (County)	Located In:	Corner Code #
1. Public Land Survey	T 23N R 4W	A-8
2. Property Controlling in Section	S T R	
3. Miscellaneous Property in Sec.	S T R	

STATE OF MICHIGAN
ROSCOMMON COUNTY
RECORDED

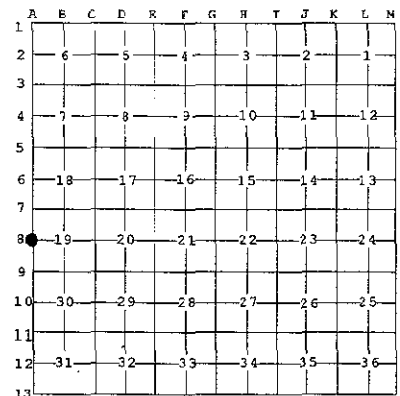
19 DEC 97 3:23 P.M.

ROBERT W. SMITH
REGISTER OF DEEDS

FILE IN LIBER 3 OF LAND CORNERS
Register of Deeds Stamp & File Num

4. Lot No. _____, Recorded Plat _____

5. Private Claims _____



I, Craig W. McVean, in a field survey on Feb. 19 97 do hereby state that under requirements of P.A. 74, Michigan P.A. of 1970, the corner points mentioned in lines 1 and 2 above were in conformance with regulations and rules therefore as required in the current manual of survey instructions of the United States Department of the Interior, Bureau of Land Management or by a decree of a Court of Law and /or that the corner points mentioned in lines 3, 4 and 5 above were in conformance with the rules of the Michigan Board of Land Surveyors or by a Decree of a Court of Law; established, re-established, monumented, recovered, found as expressed below:

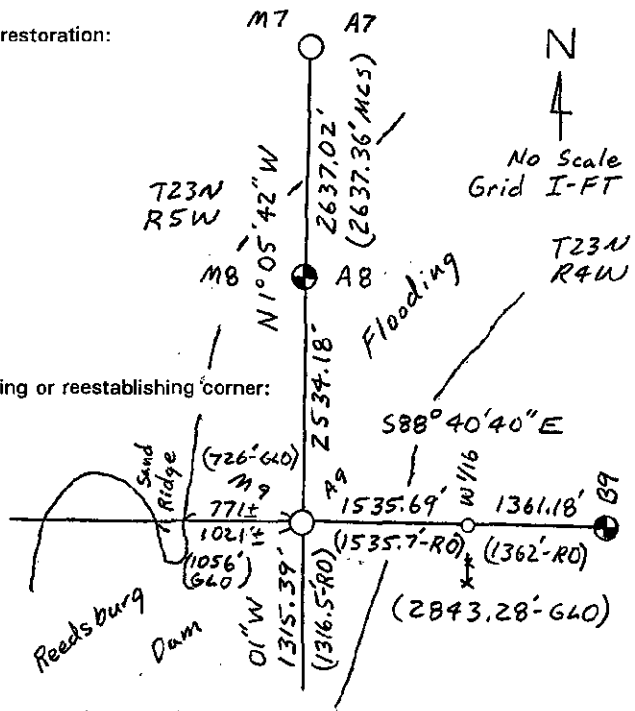
NOTE: Not more than 2 corners, all in the same town and range, may be recorded on this certificate.

A. Description of original monument and accessories and/or subsequent restoration:

- A-8 - GLO - Set 1/4 Post - J. Brink 1836
 - B. Ash 10" N45°W 50L.
 - B. Ash 8" N9°W 26L.
- Miss. Co. Bk. 24, P. 61 & BK. 23, P. 54 - 1913
 - O.B. OK Drove New Stake in Place of Old one (4" x 4' Cedar) in Swamp
 - NB S. Maple 10" N24°E 33L.
 - W. Ash 10" S39°W 80L. (81L - BK.23)
 - Dist. N. to A7 - 2637.36'

B. Description of corner evidence found and/or method applied in restoring or reestablishing corner:

- A-8 - Standard 1/4 Corner Common to Sec. 19, T23N, R4W & Sec. 24, T23N, R5W. Corner Position is under water in Reedsburg Dam Flooding - 10' ± Deep. Corner position is calculated on line between A7 and calculated position at A9 (Also in flooding) at Record County Distance South from A7. Calculated Position accepted as a careful and faithful re-establishment of the position of the original corner.



C. Description of monument for corner and accessories established to perpetuate locating the position of the corner:

- A-8 - No Monument Set - Falls in Flooding.
 - MI State Plane Coordinates Central Zone
 - NAD 83 (1994)
 - X = 19557284.52 I-FT.
 - Y = 384990.62 I-FT.
 - See Diagram for Witness Ties.



Signed by Craig W. McVean
Surveyor's Michigan License No. _____ 39088

Date 12/12/1997

**ROSCOMMON COUNTY
PEER GROUP APPROVAL
DATE April 15, 1997**

1,000 2 Dots = 1105