

DATE SURVEY & LAND CORNER RECORDATION CERTIFICATE
REMONUMENTATION Surveying Requirement of Act 74, Mich. P.A. 1970

STATE OF MICHIGAN
 ROSCOMMON COUNTY
 RECORDED

For corners in

Roscommon (County) APR 24 1995 Located In: Corner Code #

10 NOV 94 3:26 P.M.

- | | | | | |
|------------------------------------|------------|------|------|-------|
| 1. Public Land Survey | COMMISSION | T23N | R 4W | G - 5 |
| | | T | R | |
| | | T | R | |
| | | T | R | |
| 2. Property Controlling in Section | S | T | R | |
| | S | T | R | |
| 3. Miscellaneous Property in Sec. | S | T | R | |
| | S | T | R | |

ROBERT W. SMITH
 REGISTER OF DEEDS

ROSCOMMON COUNTY

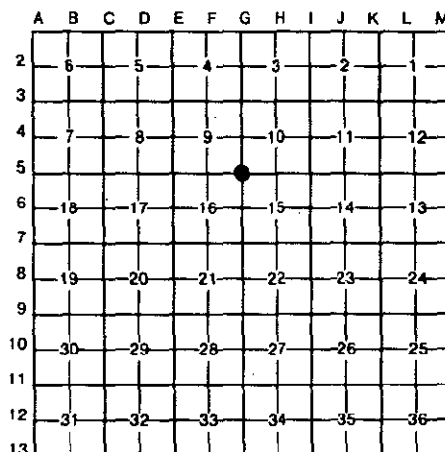
PEER GROUP APPROVAL

DATE 9-15-94 *MEV*

Register of Deeds Stamp & File Number

4. Lot No. _____, Recorded Plat _____
 5. Private Claims _____

Marvin E. Myers in a field survey on September 12, 19 94
 do hereby certify that under requirements of P.A. 74, Michigan P.A. of 1970, the corner points mentioned in lines 1 and 2 above were in conformance with regulations and rules therefore as required in the current manual of survey instructions of the United States Department of the Interior, Bureau of Land Management or by a decree of a Court of Law and/or that the corner points mentioned in lines 3, 4 and 5 above were in conformance with the rules of the Michigan Board of Land Surveyors or by a Decree of a Court of Law; established, re-established, monumented, re-monumented, recovered, found as expressed below:



NOTE: Not more than 4 corners, all in the same town and range, may be recorded on this certificate.

A. Description of original monument and accessories and/or subsequent restoration:

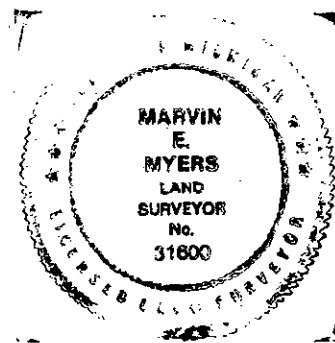
- | | | |
|---|---|---|
| GLO-Artemas Curtis 1852
Mon-Set Post
WIT: 10" Cedar N12°W 28 lks.
12" Cedar S30°E 9 lks. | Larry Cavanagh May 6, 1976
Mon-Fd. 1/2" Bar L.320, pg.318
WIT: W.E. East 16.00'
Set 1/2" Bar S02°10'44"E 149.33' | Larry Cavanagh June 1978
Mon-1/2" Bar LCRC L.1, pg.127
WIT: 4" Tw. Birch S80°E 17.04'
6" Ash S80°W 42.69'
10" Ash S72°W 40.54'
12" Tw. Ash S30°E 7.79' |
| MDOT-Ward Abrahamson Nov. 1958
Mon-Fd. 1/2" Steel Rod
WIT: 11" Poplar S05°W 34.51'
8" Poplar N85°W 27.89'
7" W.Birch N45°E 29.10' | George Henning 9-27-76
Mon-1/2" Iron
WIT: 10" Elm N86°W 27.60'
10" Birch N39°E 29.00'
12" Aspen S03°30'E 34.00' | RCRC L.2, pg.404 LCRC
Mon-1/2" Steel Rod
WIT: 7" Birch N45°E 29.10'
8" Poplar N85°W 27.89'
11" Poplar S05°W 34.51' |
| MSHD 8-5-60
Mon-Same as above
WIT: Same as above | | |

B. Description of corner evidence found and/or method applied in restoring or reestablishing corner:

Found 1/2" x 3/4" Iron Bar; and accepted as the best available evidence of the position of the original corner.

C. Description of monument for corner and accessories established to perpetuate locating the position of the corner:

- Mon-Set Std. Roscommon County Mon. stamped "G-5 T23N R4W 31600"
 WIT: Set Wit Tag. & Nail NE side 15" Tw. Elm S30°E 7.72'
 Set Wit Tag & Nail W. side 12" Elm S29°W 40.51'
 Set Wit Tag & Nail NW side 16" Elm S72°W 77.92'
 Set PK Nail top conc. seawall N33°E 20.82'
 Set Carsonite Post East 3.00'
 C-4 N00°34'13"W 2581.76'
 G-9 S01°20'47"W 1048.88'



Signed by Marvin E. Myers

Date Oct 10, 1994

Surveyor's Michigan License No. 31600

FORM APPROVED BY MICHIGAN STATE BOARD OF LAND SURVEYORS, JAN. 28, 1971
 REVISED MAY 14, 1975
 REVISED JAN., 1983

LIBER 3 PAGE 99