

LAND CORNER RECORDATION CERTIFICATE

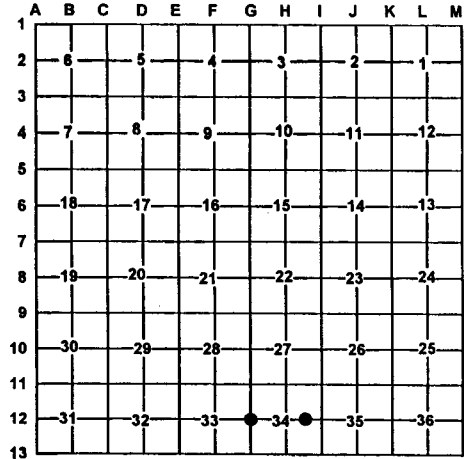
Filing Requirement of Act 74, Mich. PA 1970

For Corners In: Roscommon (County)	Located In	Corner Code #	
1. Public Land Survey	T 23N R 1W	G-12	
	T	R	
2. Property Controlling in Section	S 34 T 23N R 1W	9	
	S	T	R
3. Miscellaneous Property in Section	S	T	R
	S	T	R
4. Lot No: _____	Recorded Plat: _____		
5. Private Claims: _____			

Register of Deeds Stamp & File Number

I, Carl T. Kiiskila, in a field survey on March 15, 2000 do hereby state that under requirements of PA 74, Michigan PA of 1970, the corner points mentioned in lines 1 and 2 above were in conformance with regulations and rules therefore as required in the current manual of survey instructions of the United States Department of the Interior, Bureau of Land Management or by a decree of a Court of Law and/or that the corner points mentioned in lines 3, 4 and 5 above were in conformance with the rules of the Michigan Board of Land Surveyors or by a Decree of a Court of Law; established, re-established, monumented, recovered, found as expressed below:

NOTE: Not more than 2 corners, all in the same town and range, may be recorded on this certificate.



A. Description of original monument and accessories and/or subsequent restoration:

G-12 William Burt D.S., July 10, 1852
 Set quarter section post
 Wit: Yellow Pine 15" N78°W 28 Links
 Yellow Pine 12" S49°E 9 Links

9- This position was not established during the original government survey.

B. Description of corner evidence found and/or method applies in restoring or re-establishing corner:

G-12 Set 1" iron pipe with aluminum DNR monument cap by single proportionate measurement between found monuments one half mile to the North and South.

9- Found a 3/4" pinched pipe for the Northeast corner of the Northwest quarter of the Southeast quarter of the section 34. This corner fits proper subdivision of a section per standard BLM instructions.

C. Description of monument for corner and accessories established to perpetuate locating the position of the corner:

G-12 1" X 32" Iron pipe with aluminum DNR monument cap
 Wit: 3" White Pine N57°E 76.22'
 2" Oak S29°W 12.37'
 4' White Pine S68°E 58.94'
 4" White Pine S16°E 69.55'
 Set Carsonite post North 1'±

9- 3/4" pinched pipe
 Wit: 8" Jack Pine N07°E 20.45'
 5" Oak N67°W 21.29'
 9" Oak S16°W 15.44'
 18" Oak N66°E 51.41'
 Set Carsonite Post North 1'±

Signed by: Carl T. Kiiskila
 Surveyor's Michigan License No.: 33981

Date: 4/4/00

