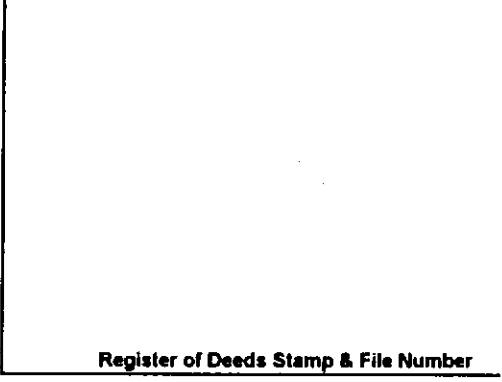


LAND CORNER RECORDATION CERTIFICATE
Filing Requirement of Act 74, Mich. P.A. 1970

For corners in

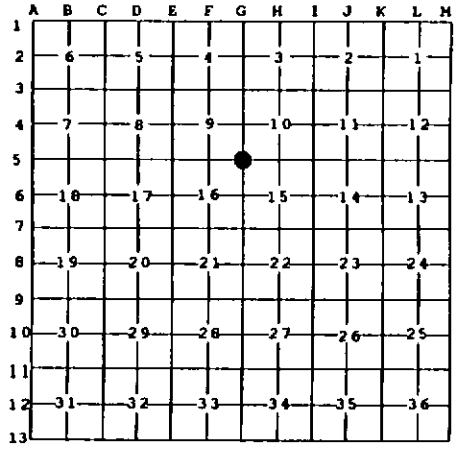
<u>Roscommon</u> (County)	Located In:	Corner Code #
1. Public Land Survey	T <u>24N</u> R <u>2W</u>	<u>G5</u>
	T _____ R _____	_____
	T _____ R _____	_____
	T _____ R _____	_____
2. Property Controlling in Section	S _____ T _____ R _____	_____
	S _____ T _____ R _____	_____
3. Miscellaneous Property in Sec.	S _____ T _____ R _____	_____
	S _____ T _____ R _____	_____



4. Lot No. _____, Recorded Plat _____

5. Private Claims _____

I, Craig W. McVean, in a field survey on July, 1996, do hereby state that under requirements of P.A. 74, Michigan P.A. of 1970, the corner points mentioned in lines 1 and 2 above were in conformance with regulations and rules therefore as required in the current manual of survey instructions of the United States Department of the Interior, Bureau of Land Management or by a decree of a Court of Law and /or that the corner points mentioned in lines 3, 4 and 5 above were in conformance with the rules of the Michigan Board of Land Surveyors or by a Decree of a Court of Law; established, re-established, monumented, recovered, found as expressed below:



NOTE: Not more than 2 corners, all in the same town and range, may be recorded on this certificate.

A. Description of original monument and accessories and/or subsequent restoration:



- G5 - Spruce Pine 8" Corner of Sec. 9, 10, 15 & 16 - Wm. Burt - 1852
S. Pine 8" N15°W 30 Lks.
- G.F. DeLaMater - 1929 - Corn @ E 5. Ran N88° 21'E 2840'
No Trace of 1/4 Cor (F6), at 5296' place temporary Cor (G5). Failed to find the old corner here and we did not do sufficient work to establish it.
- MDOT Wit. Sheet - 1/2" Steel Reinforcing Rod - 1948
S14°W 37.46' 10" J. Pine
N79°W 26.95' 10" J. Pine
N60°E 12.98' 10" J. Pine
- G. Henning Wit. Sheet - Corner probably set by DeLa Mater 1929 - used by Survey in 1952
- G. Henning Wit. Sheet - 1961 - FND. 1/2" Bar & Post in Old Fire-line crossing with witness trees facing corner.
Tags on 6" J. Pine NW 21.6
Tags on 8" B. Oak East 16.7

B. Description of corner evidence found and/or method applied in restoring or reestablishing corner:

G5 - Sec. Corner common to Sec. 9, 10, 15, & 16 - Found 1/2" x 30" Iron rod established as temp. cor. by DeLaMater - 1929 with 2 GH & 3 MDOT witness stumps in agreement with record. This temp. monument was set to fit GLO Dist S. to G7 & GLO Dist W. to E5 but its position proportional N & E was never determined by DeLaMater. In 1948 MDOT used this monument as G5 for ROW survey for Old M-76. In 1952 and 1961 G. Henning used this monument as G5 for surveys in Sec. 4 & 9 and proportional to established G2, G3 and calculated G4 position. Monument has also been used by Henning to Subdivide Sec. 16 for Rec. Survey L.263, P. 276. We measure N 376' ± vs 396' GLO to S. edge swamp and measure E. 522' ± vs 528' GLO to W. edge swamp. We retrace GLO East find no trace of 1/4 cor (H5) at 2645'. At 5295.8' vs 5289.9'-GLO we find cedar post in swamp at 15 as established by Henning in 1947. The location of this section corner monument, though not at the theoretical double proportional location, has been a part of the public record for 67 years. Since that time said monument has been used to survey and perpetuate boundary lines & corners. Therefore, as established, it is accepted as the location that can best be defended as the section corner to secs. 9, 10, 15 & 16.

C. Description of monument for corner and accessories established to perpetuate locating the position of the corner:

G5 - Replace 1/2" x 30" Iron Rod w/2 3/4" x 21" Roscommon Co. Cast Iron Monument in Ring of Stone w/Carsonite Guard post 1' N.

N12°E 70.63' to N & T in W. Side 4" B. Oak
 S48°W 35.31' to N & T in SE Side 2" B. Oak
 N23°W 34.62' to N & T in NE Side 3" R. Pine
 N72°E 16.34' to N & T in S Side 3" R. Pine

Signed by Craig W. McVean
 Surveyor's Michigan License No. 39088

Date 11/26/1996