

**SURVEY &  
REMONUMENTATION**

9574

MAY 28 1997

**COMMISSION**

**LAND CORNER RECORDATION CERTIFICATE  
Filing Requirement of Act 74, Mich. P.A. 1970**

STATE OF MICHIGAN  
ROSCOMMON COUNTY  
RECORDED

23 DEC 96 10:46 A.M.

ROBERT W. SMITH  
REGISTER OF DEEDS

For corners in

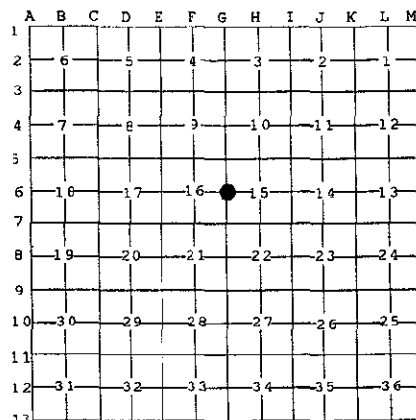
<u>Roscommon</u> <small>(County)</small>	Located In:	Corner Code #
1. Public Land Survey	T <u>24N</u> R <u>2W</u>	<u>G6</u>
	T _____ R _____	_____
	T _____ R _____	_____
	T _____ R _____	_____
2. Property Controlling in Section	S _____ T _____ R _____	_____
	S _____ T _____ R _____	_____
3. Miscellaneous Property in Sec.	S _____ T _____ R _____	_____
	S _____ T _____ R _____	_____

Register of Deeds Stamp & File Number

4. Lot No. \_\_\_\_\_, Recorded Plat \_\_\_\_\_

5. Private Claims \_\_\_\_\_

I, Craig W. McVean, in a field survey on July, 19 96  
do hereby state that under requirements of P.A. 74, Michigan P.A. of 1970, the  
corner points mentioned in lines 1 and 2 above were in conformance with  
regulations and rules therefore as required in the current manual of survey  
instructions of the United States Department of the Interior, Bureau of Land  
Management or by a decree of a Court of Law and /or that the corner points  
mentioned in lines 3, 4 and 5 above were in conformance with the rules of the  
Michigan Board of Land Surveyors or by a Decree of a Court of Law; established,  
re-established, monumented, recovered, found as expressed below:



**NOTE:** Not more than 2 corners, all in the same town and range, may be recorded on this certificate.

A. Description of original monument and accessories and/or subsequent restoration:

G6 - Set 1/4 Sec. Post - Wm. Burt - 1852  
Dead S. Pine 8" N63°W 31 Lks.  
Do. Do. 8" S50°E 14 Lks.



B. Description of corner evidence found and/or method applied in restoring or reestablishing corner:

G6 - 1/4 Corner common to Sec. 15 & 16 - Find 2 1/4" Pipe 12.66' Nly of proportional position for corner. No records on this pipe. Previous surveys by others in Sec. 16 use S.P. position for corner. Set 2 3/4" x 21" Roscommon County cast iron monument in Ring of Stone - Down 0.5' at single proportional position between G5 & G7. Monument accepted as a careful and faithful re-establishment of the position of the original corner.

C. Description of monument for corner and accessories established to perpetuate locating the position of the corner:

G6 - Set County Mon. per Part 'B'  
S25°W 25.83' to N & T in E. side 4" B. Oak Scribed 'X BT'  
N70°W 12.38' to N & T in S. side 5" B. Oak Scribed 'XBT'  
N1°W 52.30' to N & T in E. side 9" B. Oak Scribed 'XBT'  
N80°E 39.71' to N & T in S. side 2" J. Pine  
N45°W 5' to Carsonite Guard Post  
N16° 36'E 12.66' to 2 1/4" Iron Pipe

**ROSCOMMON COUNTY  
PEER GROUP APPROVAL**

DATE Aug 16, 1996

*Marvin E. Myers*  
**Marvin E. Myers, P.S.  
County Surveyor**

Signed by Craig W. McVean  
Surveyor's Michigan License No. 39088

Date 11/26/1996