

MAY 28 1997

COMMISSION

9693

LAND CORNER RECORDATION CERTIFICATE
Filing Requirement of Act 74, Mich. P.A. 1970

For corners in

Roscommon (County)

Located In:

Corner Code #

- 1. Public Land Survey T 24 N R 3 W, H-4
2. Property Controlling in Section S T R
3. Miscellaneous Property in Sec. S T R

STATE OF MICHIGAN ROSCOMMON COUNTY RECORDED

27 DEC 96 2:17 P.M.

ROBERT W. SMITH REGISTER OF DEEDS

Register of Deeds Stamp & File Number

- 4. Lot No. Recorded Plat
5. Private Claims

I, Frank J. Arleth, in a field survey on June 19 96, do hereby certify that under requirements of P.A. 74, Michigan P.A. of 1970, the corner points mentioned in lines 1 and 2 above were in conformance with regulations and rules therefore as required in the current manual of survey instructions of the United States Department of the Interior, Bureau of Land Management or by a decree of a Court of Law and/or that the corner points mentioned in lines 3, 4 and 5 above were in conformance with the rules of the Michigan Board of Land Surveyors or by a Decree of a Court of Law; established, re-established, monumented, re-monumented, recovered, found as expressed below:

Grid table with columns A-M and rows 2-13. A dot is marked at the intersection of column I and row 4.

NOTE: Not more than 4 corners, all in the same town and range, may be recorded on this certificate.

A. Description of original monument and accessories and/or subsequent restoration:

- Ostling 1946 (no Wit.) set 1/2" Bar in Road in Section Subd. of Sec. Arleth 1976 Fd. 1/2" bar in Pav't. Box No Witness. Cavanagh 1990 Fd. 1/2" bar in Pav't. Box U. Pole S50°W, 39.57' 20" Oak S45°E, 77.50' (Dead 1996) 10" Oak N45°W, 72.40' (Dead 1996) 7" Oak N62°E, 59.60'
Cavanagh 1975 Fd. 1/2" bar in Pav't. Box. Wit. U. Pole N30°E, 88.58' Henning 1982 Fd. 1/2" bar in Pav't. Box No Witness.
Wit. U. Pole S50°W, 39.57'
Wit. 10" Oak N45°W, 72.40'
Wit. 29" Oak S45°E, 77.40'

B. Description of corner evidence found and/or method applied in restoring or reestablishing corner:

- 1996 Fd. 1/2" bar in Pav't. Box in Centerline of Co. Rd. #100 and Maplehurst.
Fd. U. Pole S50°W, 39.57'
Fd. 20" Oak S45°E, 77.50' (Dead)
Fd. 10" Oak N45°W, 72.40' (Dead)

Accepted as the best available evidence of the position of the original corner.

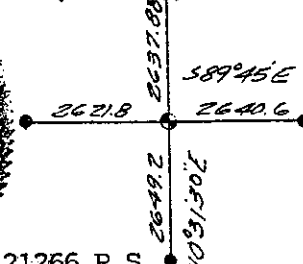
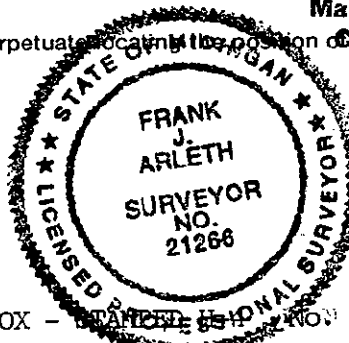
ROSCOMMON COUNTY PEER GROUP APPROVAL DATE June 17 1996

Marvin E. Myers, P.S. County Surveyor

C. Description of monument for corner and accessories established to perpetuate the position of the corner:

- N&T in 7" B. Oak N62°E, 59.52'
N&T in P. Pole N23°E, 88.40'
N&T in 8" N. Pine S38°E, 104.33'
N&T in 10" Maple S59°W, 73.75'
N&T in 26" B. Oake N71°W, 79.50'
N&T in P. Pole S50°W, 39.57'
Set Carsonite Post S45°W, 48.00'

SET ROSCOMMON COUNTY STANDARD MONUMENT IN PAV'T. BOX - STAMPED POSITION NO. 21266 P.S.



Signed by [Signature] Surveyor's Michigan License No. 21266

Date June 96

DATE: June 96

PEER GROUP APPROVED.

LIBER 3 PAGE 392