

9695

SURVEY & REMONUMENTATION

LAND CORNER RECORDATION CERTIFICATE
Filing Requirement of Act 74, Mich. P.A. 1970

MAY 28 1997

COMMISSION

For corners in

Roscommon (County)

Located In:

Corner Code #/

- 1. Public Land Survey T 24 R 3 W H-8
2. Property Controlling in Section S T R
3. Miscellaneous Property in Sec. S T R
4. Lot No. , Recorded Plat
5. Private Claims

STATE OF MICHIGAN ROSCOMMON COUNTY RECORDED

27 DEC 96 2:17 P.M.

ROBERT W. SMITH REGISTER OF DEEDS

Register of Deeds Stamp & File Number

Grid table with columns A-M and rows 2-13. Cell (8, H) contains a circled '2'.

Frank J. Arleth, in a field survey on June, 19 96, do hereby certify that under requirements of P.A. 74, Michigan P.A. of 1970, the corner points mentioned in lines 1 and 2 above were in conformance with regulations and rules therefore as required in the current manual of survey instructions of the United States Department of the Interior, Bureau of Land Management or by a decree of a Court of Law and/or that the corner points mentioned in lines 3, 4 and 5 above were in conformance with the rules of the Michigan Board of Land Surveyors or by a Decree of a Court of Law; established, re-established, monumented, re-monumented, recovered, found as expressed below.

NOTE: Not more than 4 corners, all in the same town and range, may be recorded on this certificate.

A. Description of original monument and accessories and/or subsequent restoration:

- Ostling 1946 Set 1/2" bar & casting 16" B. Oak N72°E 48.6 18" B. Oak S51°W 43.6
Henning 1948 Found 1/2" bar in Road 16" B. Oak N72°E 48.6 18" B. Oak S51°W 43.6
Ostling 1967, Plat of Oak Grove L. 5 P. 17
Arleth 1986 1/2" bar in Mon. Box Sp. 15" Oak N70°E 78.97 Sp. 10" Poplar S85°E 90.85 Sp. 12 J. Pine S45°W 79.9
Arleth 1991 1/2" bar in Pav't Box Witness same as 1986
R. C. R. C. 1/2" bar in pav't Box 1' West of centerline of County Road #100 & centerline of Oak Grove Road-West 15" Oak N70°E 78.97 10" Poplar S85°E 90.85 12" J. Pine S45°W 79.9

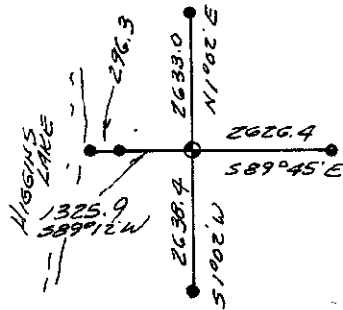
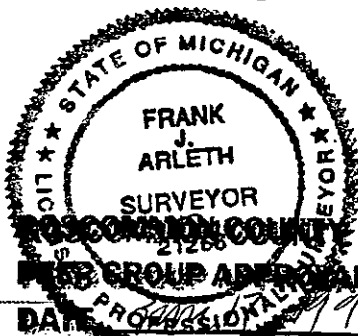
B. Description of corner evidence found and/or method applied in restoring or reestablishing corner.

- 1996 Found 1/2" bar in Pav't Box 1' West of centerline of County Road # 100 and centerline of Oak grove Road-West
Found 24" Pine S47 W 79.9 spike in tree
Found 15" oak N70°E 78.97 nail in tree
Found conc Mon. S47°W 49.0

The location of this center of section, though not the theoretical location, has been a part of the public record for 50 years. Since that time said corner has been used to survey and perpetuate boundary lines and corners. Therefore, as established it is accepted as the location that can best be defended as center of section.

C. Description of monument for corner and accessories established to perpetuate locating the position of the corner:

- Set Roscommon County Standard Monument in Pav't Box - Stamped 21266 H-8
N & T P. pole N45°E 42.38
N & T P. Pole S38°E 43.18
N & T P. Pole N 54°W 47.90
N & T 24" N. Pine S47°W 79.98
N & T 26" W. Oak S65°W 98.29
Conc. Mon. S47°W 49.00 & Carsonite Post



Signed by [Signature]
Surveyor's Michigan License No. 21266 P.S.

APPROVED BY MICHIGAN STATE BOARD OF LAND SURVEYORS, JAN. 28, 1971
REVISOR: P.S.
County Surveyor

REVISOR: P.S.
REVISOR: P.S.
REVISOR: P.S.

LIBER 3 PAGE 394