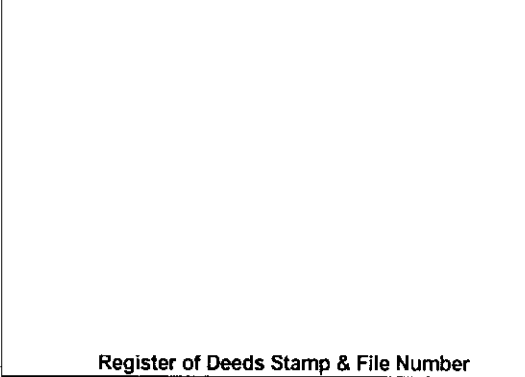


# LAND CORNER RECORDATION CERTIFICATE

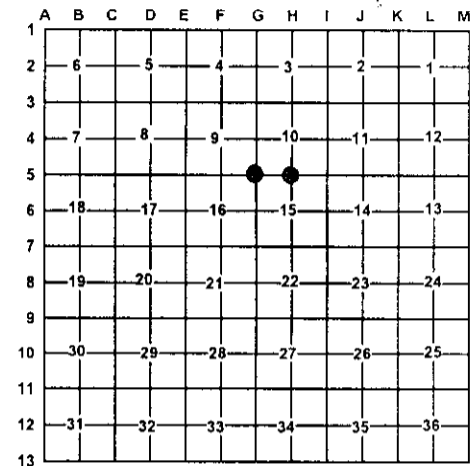
Filing Requirement of Act 74, Mich. PA 1970

For Corners In: Roscommon (County)	Located In	Corner Code #
1. Public Land Survey	T <u>24N</u> R <u>4W</u>	G-5
	T <u>24N</u> R <u>4W</u>	H-5
2. Property Controlling in Section	S _____ T _____ R _____	_____
	S _____ T _____ R _____	_____
3. Miscellaneous Property in Section	S _____ T _____ R _____	_____
	S _____ T _____ R _____	_____
4. Lot No: _____	Recorded Plat: _____	
5. Private Claims: _____		



I, Carl T. Kiiskila, in a field survey on September 9, 2003 do hereby state that under requirements of PA 74, Michigan PA of 1970, the corner points mentioned in lines 1 and 2 above were in conformance with regulations and rules therefore as required in the current manual of survey instructions of the United States Department of the Interior, Bureau of Land Management or by a decree of a Court of Law and/or that the corner points mentioned in lines 3, 4 and 5 above were in conformance with the rules of the Michigan Board of Land Surveyors or by a Decree of a Court of Law; established, re-established, monumented, recovered, found as expressed below:

**NOTE: Not more than 2 corners, all in the same town and range, may be recorded on this certificate.**



**A. Description of original monument and accessories and/or subsequent restoration:**

G-5 G.L.O. Addison P. Brewer 1852 set post corner of sections 9, 10, 15, and 16.  
Wit: S. Pine 8 N81°E 20 links  
Y. Pine 8 S76°W 26 links

H-5 Addison P. Brewer 1852 Set quarter section post  
Wit: Y. Pine N22°W 16 links  
Y. Pine S67°E 39 links

Liber 1 Page 180 Kenneth J. Ostling 1979 set DNR monument from 1" bar set by an unknown surveyor.  
Wit: 12" R. Pine S25°E 29.72'  
10" J. Pine N15°W 10.62'

Liber 1 Page 181, Kenneth J. Ostling 1979 set DNR monument at a found 1/2" iron bar previously established by G.F. DeLaMater.  
Wit: 4" W. Pine S40°E 48.62'  
10" W. Pine S62°W 36.25'  
Cedar Post North 20'

Frank J. Arleth P.S. #21266 1993 Reset 1/2" bar  
Wit: sp 12" W. Oak N80°E 72.6'  
sp 10" N. Pine N45°E 66.25'  
sp 12" J. Pine N40°W 46.6'  
sp 10" J. Pine N15°W 11.0'

**B. Description of corner evidence found and/or method applies in restoring or re-establishing corner:**

G-5 Found a bent 1" pipe with standard DNR monument along side a 1/2" CIR #21266. Placed 1" X 48" DNR monument in its place.

H-5 Found DNR monument.

**C. Description of monument for corner and accessories established to perpetuate locating the position of the corner:**

G-5 Standard DNR monument  
Wit: 8" Oak N77°E 31.25'  
3" Maple S20°E 82.65'  
3" Oak S66°W 37.11'  
9" J. Pine N10°W 11.16'  
Blue Caronite Post North 1±

H-5 Standard DNR monument  
5" W. Pine S38°E 48.75'  
14" W. Pine S60°W 36.48'  
15" Oak N32°W 46.88'  
18" Oak N26°E 52.87'

Signed by: Carl T. Kiiskila  
Surveyor's Michigan License No.: 33981

Date: 10-9-03

