

STATE OF MICHIGAN  
DEPARTMENT  
OF  
NATURAL RESOURCES

LAND CORNER RECORD

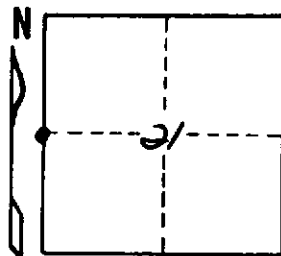
SAGINAW COUNTY  
T 11N R 3E

DESCRIPTION OF CORNER WEST 1/4 Post Sec. 21

CORNER MONUMENT MONUMENT BOX

DATE MONUMENT PLACED AND WITNESSED 24 Oct 1967

WITNESSES TO CORNER..... N 20° E 15.85' POWER POLE



N 20° E 20.70' RAIL RD TIE FENCE POST

S 41° N 38.20' STEEL RD SIGN POST

S 39° W 38.50' RAILROAD TIE WITH MSHD TAG

S 40° E 31.55' E END OF 24" CMP

AND

S 75° E 80.40' RD. SIGN POST (DEAD END)

CIRCLE CORNER REGISTERED

DESCRIPTION IN DETAIL AS TO HOW CORNER WAS LOCATED AND IDENTIFIED OR RESTORED.

FOUND 6" BELOW ROAD GRADE

SURVEYOR'S SEAL

SIGNED

[Signature]  
REGISTERED LAND SURVEYOR

DATE

Oct. 27, 1967

DISTRIBUTION:

County Courthouse  
Area Forester (Regions I & II)  
District or Region Surveyor  
Forestry Div., Lansing

R 4047  
Rev. 10/68