

APPROVED BY PEER GROUP

P.A. 345 OF 1990

SAGINAW COUNTY

3-6-96

[Signature]

1996 SAGINAW COUNTY REMONUMENTATION

LAND CORNER RECORDATION CERTIFICATE

Filing Requirement of Act 74, Mich. P.A. 1970

For corners in Thomas Township

LIBER 1985 PAGE 1458

RECORDED & FILED
SEP 23 11 35 AM 1996
MILDRED H. DODAK
REGISTER OF DEEDS
SAGINAW COUNTY MICH.

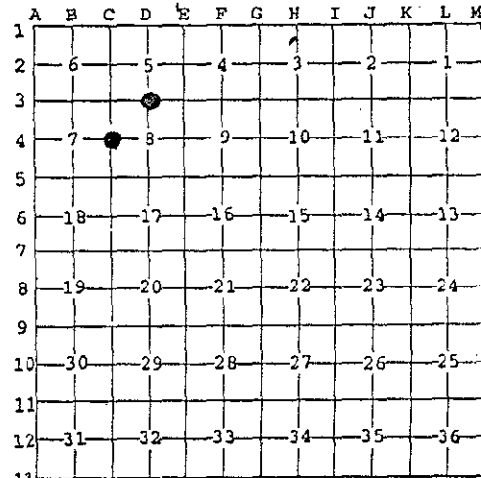
Liber 7 Page 56

Register of Deeds Stamp & File Number

Saginaw (County)	Located In:	Corner Code #
1. Public Land Survey	T 12 N. R 3 E. T 12 N. R 3 E.	<u>C-4</u> D-3
2. Property Controlling in Section	T R T R	
3. Miscellaneous Property in Sec.	S T R S T R S T R	

4. Lot No. _____, Recorded Plat _____
5. Private Claims _____

I, Ronald C. Prevost, in a field survey on 1-31, 1996 do hereby state that under requirements of P.A. 74, Michigan P.A. of 1970, the corner points mentioned in lines 1 and 2 above were in conformance with regulations and rules therefore as required in the current manual of survey instructions of the United States Department of the Interior, Bureau of Land Management or by a decree of a Court of Law and for that the corner points mentioned in lines 3, 4 and 5 above were in conformance with the rules of the Michigan Board of Land Surveyors or by a Decree of a Court of Law; established, re-established, monumented, recovered, found as expressed below:



NOTE: Not more than 2 corners, all in the same town and range, may be recorded on this certificate.

A. Description of original monument and accessories and/or subsequent restoration:

- C-4 Post by Wampler 1822
Birch 8" S.37°E. 13 L
Birch 8" N.52°E. 5 L
LCRC L3 P113 3/4" pipe, Leach 1975
Recorded survey Leach L1446 P682, 1975
- D-3 Post by Wampler 1822
Ash 20" S.77 1/2 E. 11 L
Ash 18" N.10 1/2 W. 3 L
LCRC L1 P170 3/4" pipe, McKelvey 1972
Spicer Engineering Co. Records 3/4" pipe 1975
LCRC, L5 P129 3/4" pipe, Leach, 1981
Recorded surveys L1368 P895, L1386 P729, L1419 P380, L1597 P217, L1721 P242

B. Description of corner evidence found and/or method applied in restoring or reestablishing corner:

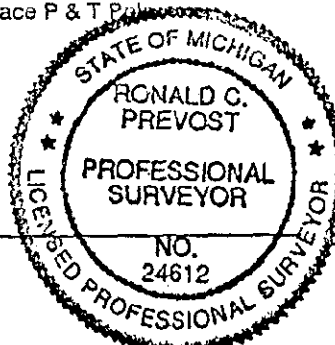
- C-4 Found 3/4" pipe with witnesses
East 33.30' to 3/4" pipe (M 33.00)
West 33.00' to 3/4" pipe (M 33.00)
S.40°W. 78.00 to nail & tag in N.E. face P. pole (78.00M)
Accepted by Peer Review Group 3-6-96
Position accepted as best available evidence of original corner.
- D-3 Found 3/4" pipe with witnesses
S.W. 24.04 to ctr. hyd (M 24.05)
South 24.10 top hyd. (M 24.05)
North 33.00 to 3/4 #4649 (M 33.00)
Accepted by Peer Review Group 3-6-96.
Position accepted as best available evidence of original corner.

C. Description of monument for corner and accessories established to perpetuate locating the position of the corner:

- C-4 Set 5/8" bar & Sag. Co. Remon cap in place of 3/4" pipe in existing mon box 3-22-96
East 33.00 to 3/4" pipe
West 33.00 to 3/4" pipe
S.40°W. 78.00 to nail & tag in N.E. face P. Pole
N.45°E. 44.73 nail & cap rt. side 8" Poplar
- D-3 Set mon box with 5/8" bar & Sag. Co. Remon cap in place of 3/4" pipe.
N.10°E. 30.84 nail & ribbon W. face 14" Poplar
S.30°E. 34.94 nail & ribbon N.E. face 8" Spruce
N.85°W. 116.05 nail & ribbon N. Face P & T Pole
S.10°W. 24.05 ctr. hyd.

Signed by *Ronald C. Prevost*

Date 9-20-96



Surveyor's Michigan License No. 24612

REMONUMENTATION

MAY 16 1997

COMMISSION