

APPROVED BY PEER GROUP
P.A. 345 OF 1990
SAGINAW COUNTY

LIBER 1956 PAGE 1112

Lib 7 Page 22

SAGINAW COUNTY REMONUMENTATION

LAND CORNER RECORDATION CERTIFICATE

Filing Requirement of Act 74, Mich. P.A. 1970

Thomas Twp.

For corners in

Saginaw

(County)

Located In:

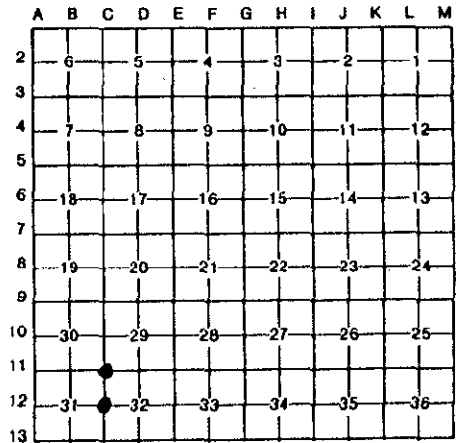
Corner Code ##

1. Public Land Survey	T	12	R	3E	C-11, C-12
	T		R		
	T		R		
	T		R		
2. Property Controlling in Section	S		T	R	
	S		T	R	
3. Miscellaneous Property in Sec.	S		T	R	
	S		T	R	

REGISTERED & FILED
 DEC 28 12 35 PM '95
 REGISTERED CLERK
 SAGINAW COUNTY MICH.

Register of Deeds Stamp & File Number

- 4. Lot No. _____, Recorded Plat _____
- 5. Private Claims _____



I, Duane F. Ledy, in a field survey on November 27, 19 95, do hereby certify that under requirements of P.A. 74, Michigan P.A. of 1970, the corner points mentioned in lines 1 and 2 above were in conformance with regulations and rules therefore as required in the current manual of survey instructions of the United States Department of the Interior, Bureau of Land Management or by a decree of a Court of Law and/or that the corner points mentioned in lines 3, 4 and 5 above were in conformance with the rules of the Michigan Board of Land Surveyors or by a Decree of a Court of Law; established, re-established, monumented, re-monumented, recovered, found as expressed below:

NOTE: Not more than 4 corners, all in the same town and range, may be recorded on this certificate.

A. Description of original monument and accessories and/or subsequent restoration:

C-11

Set post 80 chains north of C-13; J. Wampler, 1922
 7" Beech - S 30°E, 10 links
 11" Beech - N 30°E, 22 links'
 L.C.R.C., L4P 203 by Prevost notes finding a 1/2" bar in 1979.
 Spicer Engineering records dating back to 1954 indicate point as being a 3/4" pipe. Act 132 recorded (L1518, P186) by Leach, (L1339, P292) by Martin and (L1465, P312) by Martin indicate a 3/4" pipe.

C-12

Set post 40 chains north of C-13, J. Wampler, 1922.
 14" Elm - S 80°W, 16 links
 8" Ash - N 61°E, 33 links'
 Prevost recorded finding 1" solid bar in 1978, L.C.R.C. L4, P148.
 Notes on L.C.R.C. records that Spicer found 3/4" pipe and rotted wood beneath stone in 1969. Set 1"x36" hex bolt at that date. Also recorded in L.C.R.C. L4, P203 and 1972 Act 132 recorded by Ledy in 1981 (L1609, P2198).

B. Description of corner evidence found and/or method applied in restoring or reestablishing corner:

C-11

Found 1/2" rod
 East - 60.48' Face of P. Pole
 S 75°E - 153.8' NW cor. brick house
 N 85°E - 49.3' Face of 10" oak

C-12

Found 1 1/4" hex bolt
 N 25°E - 121.27' to East end of 24" C.M.P.
 N 25°W - 119.00' to West end of 24" C.M.P.
 West - 66.95' to Nail & Tag in South face of P. Pole

Monument accepted as best available evidence of the position of the original corner.

Monument accepted as best available evidence of the position of the original corner.

REMONUMENTATION

FEB 22 1996

COMMISSION

C. Description of monument for corner and accessories established to perpetuate locating the position of the corner:

Replaced 1/2" rod with 5/8" rod and 2 1/2" Saginaw County brass cap in monument box.
 East - 60.95' - Nail & Tag in South side of P. Pole
 S 20°W - 49.95', Nail & Tag in East side of 8" Maple
 N 45°W - 52.50', Nail & Tag in East side of 15" Elm
 West - 114.40', Nail & Tag in South side of P. Pole

Replaced 1 1/4" hex bolt with 5/8" rod and 2 1/2" Saginaw County brass cap in monument box.
 West - 66.89' to Nail & Tag in South side of P. Pole
 N 25°E - 121.27' to East end of 24" C.M.P.
 N 25°W - 119.00' to West end of 24" C.M.P.
 N 20°E - 212.65' to top center of bell box

Signed by Duane F. Ledy Date 12-28-95
 Surveyor's Michigan License No. 21575

