

APPROVED BY PEER GROUP
 P.A. 345 OF 1990
 SAGINAW COUNTY
 3-6-96 & 8-20-96 *BD*

1996 SAGINAW COUNTY REMONUMENTATION
 LAND CORNER RECORDATION CERTIFICATE
 Filing Requirement of Act 74, Mich. P.A. 1970

LIBER 1985 PAGE 1457

For corners in Thomas Township

Saginaw (County)	Located In:	Corner Code #
1. Public Land Survey	T 12 N. R 3 E. T 12 N. R 3 E. T ___ R ___ T ___ R ___	<u>E-2</u> H-3 _____ _____
2. Property Controlling in Section	S ___ T ___ R ___ S ___ T ___ R ___	_____ _____
3. Miscellaneous Property in Sec.	S ___ T ___ R ___ S ___ T ___ R ___	_____ _____

RECORDED & FILED

MILDRED H. DODAK
REGISTER OF DEEDS
SAGINAW COUNTY MICH.

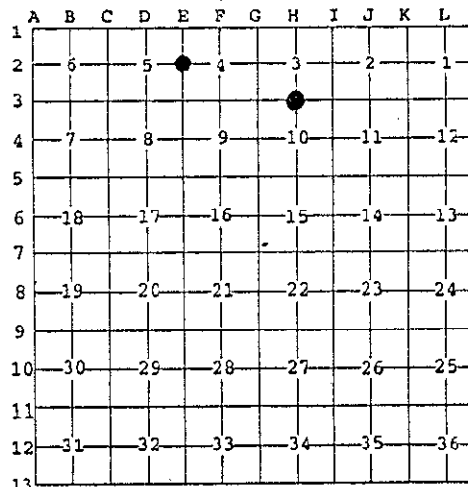
SEP 23 11 35 AM 1996

Lib 7 Page 55

Register of Deeds Stamp & File Number

4. Lot No. _____, Recorded Plat _____
 5. Private Claims _____

I, Ronald C. Prevost, in a field survey on 1-31, 19 96 do hereby state that under requirements of P.A. 74, Michigan P.A. of 1970, the corner points mentioned in lines 1 and 2 above were in conformance with regulations and rules therefore as required in the current manual of survey Instructions of the United States Department of the Interior, Bureau of Land Management or by a decree of a Court of Law and /or that the corner points mentioned in lines 3, 4 and 5 above were in conformance with the rules of the Michigan Board of Land Surveyors or by a Decree of a Court of Law; established, re-established, monumented, recovered, found as expressed below:



NOTE: Not more than 2 corners, all in the same town and range, may be recorded on this certificate.

A. Description of original monument and accessories and/or subsequent restoration:

E-2 Post by Wampler 1822
 Maple 18" S.30 W. 10 L
 Maple 17" S.75 E. 7 L
 LCRC L1 P171, R.R. spike, McKelvey 1972
 Spicer Engineering Co. record R.R. spike 1972
 Recorded surveys L1361 P1132, L1434 P903, L1591 P1784,
 L1612 P1976

H-3 Post by Wampler 1822
 Beech 11" N.50 1/2 E. 6 L
 Beech 9" N.40 W. 12 L
 SCRC record 1922 wood stake & crockery
 Spicer Engineering Co. record 3/4" pipe 1952
 LCRC L3 P193 rod/m box, Tommer 1976
 LCRC L5 P80 3/4" pipe, Prevost 1980
 Recorded surveys L1655 P727, L1801 P319

B. Description of corner evidence found and/or method applied in restoring or reestablishing corner:

E-2 Found R.R. spike with witnesses
 West 50.40 P.K. nail in U.P. (50.32M)
 N.W. 120.75 S.E. cor. blk. found. house (120.75M)
 West 50.15 face P & T pole (50.15M)
 Accepted by Peer Review Group 3-6-96
 Position accepted as best available evidence of original corner.

H-3 Found 3/4" pipe with witnesses
 S.W. 90.87 N.E. cor. brick ho. (90.60M)
 N.W. 101.98 S.E. cor. masonry ho. (frame ho. 101.98M)
 S.2° E. 46.03 P.K. nail N.face U.P. (46.41 M)
 S45°E. 30.90 ctr. hyd. (30.87 M)
 South 46.43 P.K. nail in P. Pole (46.41 M)
 E.N.E. 73.30 P.K. nail in P. Pole (73.25 M)
 N.W. 55.35 nail in 8" Maple (55.66 M)
 S.E. 30.83 ctr. hyd. (30.87 M)
 Accepted by Peer Review Group 3-6-96.
 Position accepted as best available evidence of original corner.
 NOTE: No mon box as stated in LCRC L3 P193 and as clarified in LCRC L5 P80.

C. Description of monument for corner and accessories established to perpetuate locating the position of the corner:

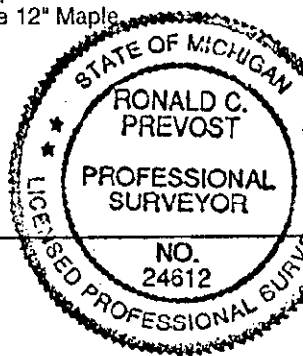
E-2 Set mon box with 5/8" bar & Sag. Co. Remon cap in place of R.R. spike 3-21-96
 East 54.63 nail & cap Rt. side 10" Oak
 West 33.00 to 3/4" pipe
 N.35°W. 66.34 nail & cap Rt. Side 10" Tree
 West 50.32 P.K. S. Face P & T pole
 N.45°W 120.75 S.E. cor. Blk fndn. House

H-3 Set mon box with 5/8" bar & Sag. Co. Remon cap in place of 3/4" pipe 3-20-96.
 South 46.41 P.K. in W. face P. pole
 N.50°E. 73.25 P.K. in S. face T. pole
 N.60°W. 55.66 nail & cap Rt. side 12" Maple
 S.15°E. 30.87 ctr. hyd.
 South 33.00 conc. plat mon
 South 1.5' centerline bit. surface

Signed by Ronald C. Prevost

Date 9-20-96

Surveyor's Michigan License No. 24612



MAY 1 9 1997