

SAGINAW COUNTY REMONUMENTATION

LAND CORNER RECORDATION CERTIFICATE

Filing Requirement of Act 74, Mich. P.A. 1970

Thomas Twp.

Lib 7 Page 24

For corners in

Saginaw

(County)

Located In:

Corner Code #

1. Public Land Survey	T	12N	R	3E	D-11	F-11
	T		R			
	T		R			
	T		R			
2. Property Controlling in Section	S		T	R		
	S		T	R		
3. Miscellaneous Property in Sec.	S		T	R		
	S		T	R		

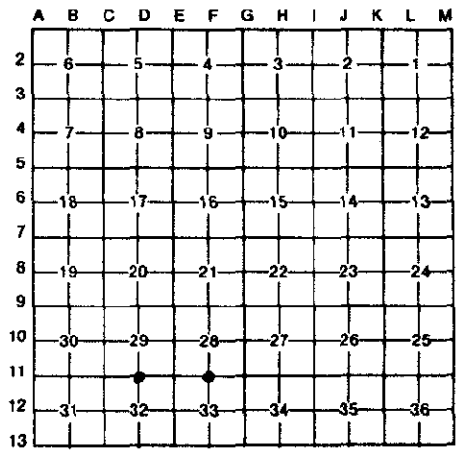
MICHIGAN STATE BOARD OF LAND SURVEYORS
 RECORDS SECTION
 SAGINAW COUNTY MICH.

Dec 28 12 35 PM '95

RECORDED & FILED

Register of Deeds Stamp & File Number

4. Lot No. _____, Recorded Plat _____
 5. Private Claims _____



I, Duane F. Ledy, in a field survey on December 6, 19 95, do hereby certify that under requirements of P.A. 74, Michigan P.A. of 1970, the corner points mentioned in lines 1 and 2 above were in conformance with regulations and rules therefore as required in the current manual of survey instructions of the United States Department of the Interior, Bureau of Land Management or by a decree of a Court of Law and/or that the corner points mentioned in lines 3, 4 and 5 above were in conformance with the rules of the Michigan Board of Land Surveyors or by a Decree of a Court of Law; established, re-established, monumented, re-monumented, recovered, found as expressed below:

NOTE: Not more than 4 corners, all in the same town and range, may be recorded on this certificate.

A. Description of original monument and accessories and/or subsequent restoration:

D-11

Set post 40.225 chains East of C-11; J. Wampler, 1922
 16" White Oak - N 70°W, 8 links
 32" Pine - S 70°E, 3 links
 Hammond recorded a 3/4" pipe at D-11 in Survey recorded in (L1567, P1217) dated 1979. Postion was set at split on line between C-11 and E-11. D-10 calculated at split between C-10 and E-10. Spicer Engineering records indicate setting a 3/4" pipe at D-11 at intersection of fence corners in 1969. Postion used for DUDE ESTATES in SE 1/4.

F-11

Set posts 39.93 chains East of E-10, J. Wampler, 1922
 40" Pine - N 81°W, 19 links
 16" Maple - N 24°E, 17 links
 Juras found 1 1/4" pipe between three fence posts in 1989, recorded on L.C.R.C. (L6, P55), Ferguson recorded Act 132 (L1612, P1974) giving position of F-11 from G-11.

B. Description of corner evidence found and/or method applied in restoring or reestablishing corner:

D-11

Found 3/4" pipe with cap no. 4699 at position called for in Spicer Engineering 1969 breakdown. Also found Hammond iron on side approximately 20' to South of Spicer iron

Postion of Spicer iron accepted as best available evidence of the position of the original corner.

F-11

Found 1 1/2" pipe, all recorded witnesses gone. Measured data to F-11 agrees with Ferguson's measurement from G-11 on recorded survey.

Postion of pipe accepted as best available evidence of the position of the original corner.

REMONUMENTATION

FEB 22 1996

COMMISSION

C. Description of monument for corner and accessories established to perpetuate locating the position of the corner:

D-11

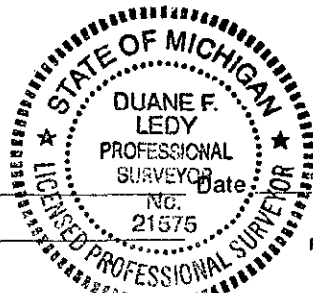
Placed 5/8" rod with 2 1/2" Saginaw County brass cap over 3/4" pipe, set in monument box.
 North - 29.88' to 1/2" rod with Ledy cap, 12" deep
 East - 16.30' to Nail & Cap in North side of 10" Apple in clump of Apple trees
 South - 0.35' to face of 6' fence post
 West - 22.51' to 1/2" rod with Ledy cap, 12" deep

F-11

Placed 5/8" rod with 2 1/2" Saginaw County brass cap inside of 1 1/4" pipe, set in monument box.
 East - 16.95' to Nail & Tag in 8" Cherry
 North - 3.59' to Nail & Tag in West side of 12" Box Elder
 S 70°W - 30.58' to Nail & Tag in South side of 6" Maple
 South - 10.75' to Nail & Tag in 10" Twin Maple

Signed by Duane F. Ledy

Surveyor's Michigan License No. 21575



12-28-95