

B-20-96 BDA
For corners in Thomas Township

LIBER 1997 PAGE 211

Saginaw
(County)

Located In:

Corner Code #

1997 JAN 16 P 2:43

1. Public Land Survey

T 12 N. R 3 E.

T 12 N. R 3 E.

T R

T R

2. Property Controlling in Section

S

T R

S

T R

3. Miscellaneous Property in Sec.

S

T R

S

T R

C-5 MILDRED M. DODAK
REGISTER OF DEEDS
SAGINAW COUNTY, MI.

MILDRED M. DODAK
REGISTER OF DEEDS
SAGINAW COUNTY MICH.

SEP 23 11 34 AM '96

RECORDED & FILED

Libers 7 Page 47

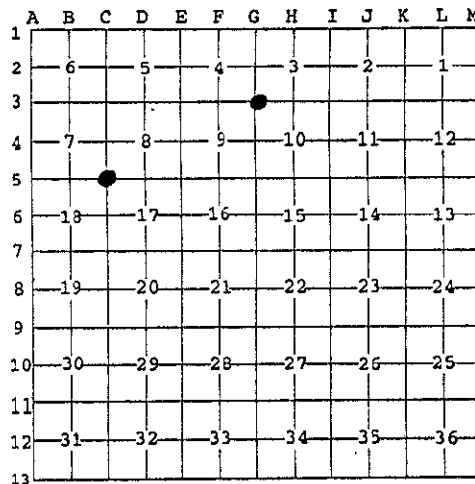
Register of Deeds Stamp & File Number

4. Lot No. _____, Recorded Plat _____
5. Private Claims _____

I, Ronald C. Prevost, in a field survey on 1-31, 1996 do hereby state that under requirements of P.A. 74, Michigan P.A. of 1970, the corner points mentioned in lines 1 and 2 above were in conformance with regulations and rules therefore as required in the current manual of survey instructions of the United States Department of the Interior, Bureau of Land Management or by a decree of a Court of Law and /or that the corner points mentioned in lines 3, 4 and 5 above were in conformance with the rules of the Michigan Board of Land Surveyors or by a Decree of a Court of Law; established, re-established, monumented, recovered, found as expressed below:

NOTE: Not more than 2 corners, all in the same town and range, may be recorded on this certificate.

Being rerecorded to correct error of omission.



A. Description of original monument and accessories and/or subsequent restoration:

C-5 Post set by Wampler, 1822
S.C.R.C. 1926 2" wood stake
Roofing nail & cap found 1958, Spicer Eng.
L.C.R.C. L1, P155, RR spike - 1972, McKelvey.
Recorded surveys L1344 P579, L1349 P799, L1358 P1299, L1446 P682

G-3 Post set by Wampler, 1822, S.C.R.C record 1922 wood stake & crock. Spicer record 1953 fnd 1" pipe, Spicer record 1971 fnd 3/4" pipe. LCRC L1 P121, sides fnd 3/4" pipe, 1971. S.C.R.C. record 1973 fnd 1" pipe, placed M.B. 1974. Placed adjusting ring 1974. Rec'd Surveys L1374 P1082, L1446 P694, L1563 P1279, L1783 P1131, L1889 P519

B. Description of corner evidence found and/or method applied in restoring or reestablishing corner:

C-5 Found 3/4" pipe in Mon Box
SE 146.55 face P Pole (146.55R)(1958 Spicer notes)
SE 146.99 Surveyors disc face U Pole (146.58R LCRC L1 P155)
NW 50.90 ctr. st. sign post (51.08R LCRC L1 P155)
SW 70.67 Surveyors disc in U Pole (70.67R LCRC L1 P155)
Location accepted by Peer Review Group 8-20-96 as the best available evidence of the original government corner.

G-3 Found boat spike in Mon Box, 1/2 mile measurements N.S.E. & W. agree closely with previous measurements. Note: 1922 S.C.R.C. wit SE 71.0 to church & 1953 Spicer wit 70.93 to church. Note: 1971 Spicer wit SE 53.55 ctr hyd. now SE 53.69 ctr hyd. Location accepted by Peer Review Group 3-6-96 as the best available evidence of the original government corner.

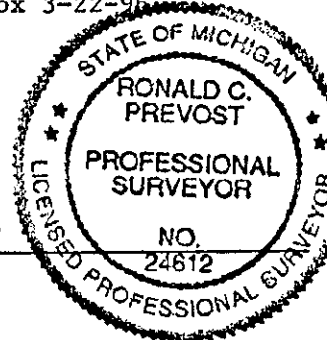
C. Description of monument for corner and accessories established to perpetuate locating the position of the corner:

C-5 Replaced 3/4" pipe with 5/8" bar and Saginaw Co. Re-Mon cap in existing Mon. Box 9-96
S.45°W 70.67 Surveyors disc face Util. Pole
N.45°W 50.90 Ctr. st. sign post.
S.65°E. 146.99 Surveyors disc face Util Pole
N.45°E. 71.47 set nail rt. side 8" Poplar.

G-3 Replaced boat spike with 5/8" rod & Sag. Co. Re-mon cap in existing Mon Box 3-22-96
N.45°W. 40.28 (40.35R) nail & cap SW side T. pole.
N.40°E. 62.30 (62.35R) nail & cap SE side P. pole.
S.45°E. 48.63 set nail & cap RT. side P. & T. pole.
S.40°E. 53.69 (53.55R) ctr. hyd.
S.40°E. 118.60 N.W. cor. block fnd'n church.

Signed by Ronald C. Prevost

Date 1-16-97
9-20-96



Surveyor's Michigan License No. 24612

REMONUMENTATION