

DEC 15 1993

**Saginaw County Remonumentation**

LIBER 1886 PAGE 682

**COMMISSION**

**LAND CORNER RECORDATION CERTIFICATE**  
Filing Requirement of Act 74, Mich. P.A. 1970

LIBER 6 Page 147

For corners in

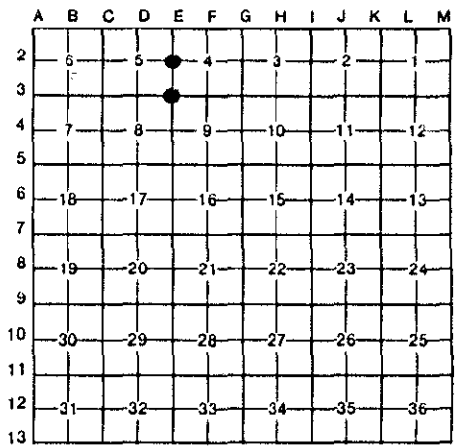
<u>Saginaw</u> (County)	Located In:	Corner Code -#
1. Public Land Survey	T <u>12N</u> R <u>4E</u>	<u>E-2</u>
	T <u>12N</u> R <u>4E</u>	<u>E-3</u>
	T _____ R _____	_____
	T _____ R _____	_____
2. Property Controlling in Section	S _____ T _____ R _____	_____
	S _____ T _____ R _____	_____
3. Miscellaneous Property in Sec.	S _____ T _____ R _____	_____
	S _____ T _____ R _____	_____

REGISTERED & FILED  
 DEC 14 20 PM '93  
 REGISTER OF DEEDS  
 SAGINAW COUNTY MICHIGAN  
 Register of Deeds Stamp & File Number

4. Lot No. \_\_\_\_\_, Recorded Plat \_\_\_\_\_  
 5. Private Claims \_\_\_\_\_

I, Craig W. McVean, in a field survey on August 19, 1993

do hereby certify that under requirements of P.A. 74, Michigan P.A. of 1970, the corner points mentioned in lines 1 and 2 above were in conformance with regulations and rules therefore as required in the current manual of survey instructions of the United States Department of the Interior, Bureau of Land Management or by a decree of a Court of Law and/or that the corner points mentioned in lines 3, 4 and 5 above were in conformance with the rules of the Michigan Board of Land Surveyors or by a Decree of a Court of Law; established, re-established, monumented, re-monumented, recovered, found as expressed below:



**NOTE: Not more than 4 corners, all in the same town and range, may be recorded on this certificate.**

**A. Description of original monument and accessories and/or subsequent restoration:**

E-2 16" Beech - J. Wampler, 1822.  
 No evidence of tree found.  
  
 L.C.R.C. - L. 5, P. 114 - 1981 - Prevost.  
 Recorded Survey - L. 1801, P. 306 - 1990.

E-3 Set post - J. Wampler, 1822.  
 Sugar 9° N 67° W 11 L.  
 Lynn 14° N 88° E 11 L.  
 No evidence of post or witnesses found.  
  
 L.C.R.C. - L. 1, P. 118 - 1971 - Sides.  
 L.C.R.C. - L. 2, P. 6 - 1972 - Clapp.  
 Recorded Surveys - L. 1801, P. 306 - 1990; L. 1493, P. 718 - 1974;  
 L. 1350, P. 495 - 1971; L. 1552, P. 234 - 1978  
 7 record plats tied to corner.

**B. Description of corner evidence found and/or method applied in restoring or reestablishing corner:**

E-2 Found boat spike in mon. box per L.C.R.C. - L. 5, P. 114. Monument accepted as the best available evidence of the position of the original corner. Accepted by Saginaw County Peer Review Group on 9-23-93.

E-3 Found 1" boat spike in mon. box per L.C.R.C. - L. 1, P. 118 and L. 2, P. 6. Monument accepted as the best available evidence of the position of the original corner. Accepted by Saginaw County Peer Review Group on 9-23-93.

**C. Description of monument for corner and accessories established to perpetuate locating the position of the corner:**

E-2 Replaced boat spike with Saginaw County 3" brass cap on 5/8" rebar in mon. box.  
 N 70° E 60.14' to nail and tag in N side U.P.  
 S 18° E 74.54' to chiseled 'x' on NW flange bolt of fire hydrant.  
 N 80° W 26.93' to chiseled 'x' on E end 6" steel pipe.  
 S 41° W 147.84' to nail and tag in N side U.P.  
 N 89° E 23.33' to P.K. nail in wood H.W.

E-3 Replaced 1" boat spike with Saginaw County 3" brass cap on 5/8" rebar in mon. box.  
 S 45° E 122.83' to NW corner of House #4979.  
 S 55° W 224.51' to NE corner church.  
 N 79° E 58.47' to chiseled 'x' on SW corner CB.  
 N 41° W 128.68' to SE corner concrete porch of House #5022.

Signed by Craig W. McVean  
 Surveyor's Michigan License No. 39088

Date 12-1-93

