

SURVEY & REMONUMENTATION

DEC 15 1993

COMMISSION

Saginaw County Remonumentation

LAND CORNER RECORDATION CERTIFICATE
Filing Requirement of Act 74, Mich. P.A. 1970

LIBER 1886 PAGE 689
LIBER 6 Page 154

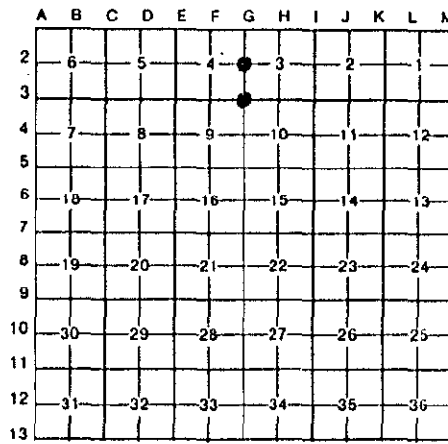
For corners in

Saginaw (County)	Located In:	Corner Code -#
1. Public Land Survey	T <u>12N</u> R <u>4E</u>	<u>G-2</u>
	T <u>12N</u> R <u>4E</u>	<u>G-3</u>
	T _____ R _____	_____
	T _____ R _____	_____
2. Property Controlling in Section	S _____ T _____ R _____	_____
	S _____ T _____ R _____	_____
3. Miscellaneous Property in Sec.	S _____ T _____ R _____	_____
	S _____ T _____ R _____	_____

REGISTERED & FILED
 DEC 14 20 PM '93
 REGISTERED DEEDS
 SAGINAW COUNTY MICH.

Register of Deeds Stamp & File Number

4. Lot No. _____, Recorded Plat _____
 5. Private Claims _____



I, **Craig W. McVean**, in a field survey on **August 19**, 19 **93**, do hereby certify that under requirements of P.A. 74, Michigan P.A. of 1970, the corner points mentioned in lines 1 and 2 above were in conformance with regulations and rules theretofore as required in the current manual of survey instructions of the United States Department of the Interior, Bureau of Land Management or by a decree of a Court of Law and/or that the corner points mentioned in lines 3, 4 and 5 above were in conformance with the rules of the Michigan Board of Land Surveyors or by a Decree of a Court of Law; established, re-established, monumented, re-monumented, recovered, found as expressed below:

NOTE: Not more than 4 corners, all in the same town and range, may be recorded on this certificate.

A. Description of original monument and accessories and/or subsequent restoration:

G-2 Set post - J. Wampler, 1822.
 Beech 5" S 3° W 6-1/2 L.
 Lynn 11" N 62° E 9 L.
 No evidence of post or witnesses found.

L.C.R.C. - L. 1, P. 40 - 1971 - Martin.
 S.C.R.C. set mon. box 3-11-77.
 Recorded Survey - L. 1483, P. 195 - 1976.
 4 record plats tied to corner.

G-3 Set post - J. Wampler, 1822.
 W. Oak 30" S 41° E 22 L.
 Beech 11" N 14° E 16 L.
 No evidence of post or witnesses found.

L.C.R.C. - L. 1, P. 40 - 1971 - Martin.
 Recorded Surveys - L. 1547, P. 414 - 1976; L. 1817, P. 692 - 1992;
 L. 1811, P. 1687 - 1990.
 8 record plats tied to corner.

B. Description of corner evidence found and/or method applied in restoring or reestablishing corner:

G-2 Found 3/4" boat spike in mon. box (recorded L.C.R.C. - 3/4" pipe). Record witnesses and plat monuments verify location of boat spike. Monument accepted as the best available evidence of the position of the original corner. Accepted by Saginaw County Peer Review Group on 9-23-93.

G-3 Found 3/4" iron pipe in mon. box per L.C.R.C. - L. 1, P. 40. Monument accepted as the best available evidence of the position of the original corner. Accepted by Saginaw County Peer Review Group on 9-30-93.

C. Description of monument for corner and accessories established to perpetuate locating the position of the corner:

G-2 Replaced boat spike with Saginaw County 3" brass cap on 5/8" rebar in mon. box.
 S 49° W 99.75' to SE corner concrete porch at House #5245.
 N 48° E 156.46' to SW corner garage at House #5264.
 N 71° E 148.34' to SW corner House #5256.
 S 30° E 69.42' to nail and tag in NE side U.P.
 N 32° W 41.53' to nail and tag in W'ly side U.P.
 E 50.1' (50' P.) to concrete plat monument.

G-3 Replaced 3/4" iron pipe with Saginaw County 3" brass cap on 5/8" rebar in mon. box.
 N 20° W 73.62' to chiseled 'x' on SW flange bolt on fire hydrant.
 S 32° W 60.05' to nail and tag in W side U.P.
 N 60° E 70.76' to chiseled 'x' on N rim bell manhole.
 S 51° E 244.84 to NW corner of church.

Signed by Craig W. McVean
 Surveyor's Michigan License No. 39088

Date 12-1-93

