

DEC 15 1993

LIBER 1886 PAGE 688

Saginaw County Remonumentation

COMMISSION

LAND CORNER RECORDATION CERTIFICATE

Filing Requirement of Act 74, Mich. P.A. 1970

FILED IN LIBER 1886 PAGE 688  
REGISTER OF DEEDS  
SAGINAW COUNTY MICH.

Dec 14 2 07 PM '93

RECORDED & FILED

For corners in

Saginaw  
(County)

Located In:

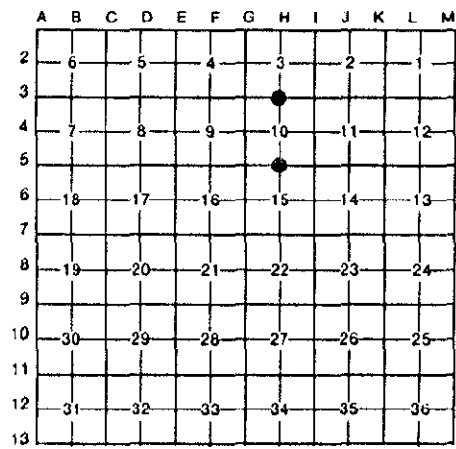
Corner Code #

- 1. Public Land Survey T 12N R 4E H-3  
T 12N R 4E H-5  
T \_\_\_\_\_ R \_\_\_\_\_  
T \_\_\_\_\_ R \_\_\_\_\_
- 2. Property Controlling in Section S \_\_\_\_\_ T \_\_\_\_\_ R \_\_\_\_\_  
S \_\_\_\_\_ T \_\_\_\_\_ R \_\_\_\_\_
- 3. Miscellaneous Property in Sec. S \_\_\_\_\_ T \_\_\_\_\_ R \_\_\_\_\_  
S \_\_\_\_\_ T \_\_\_\_\_ R \_\_\_\_\_
- 4. Lot No. \_\_\_\_\_, Recorded Plat \_\_\_\_\_
- 5. Private Claims \_\_\_\_\_

Lib 6 Page 153

Register of Deeds Stamp & File Number

I, Craig W. McVean, in a field survey on August 19, 19 93, do hereby certify that under requirements of P.A. 74, Michigan P.A. of 1970, the corner points mentioned in lines 1 and 2 above were in conformance with regulations and rules therefore as required in the current manual of survey instructions of the United States Department of the Interior, Bureau of Land Management or by a decree of a Court of Law and/or that the corner points mentioned in lines 3, 4 and 5 above were in conformance with the rules of the Michigan Board of Land Surveyors or by a Decree of a Court of Law; established, re-established, monumented, re-monumented, recovered, found as expressed below:



NOTE: Not more than 4 corners, all in the same town and range, may be recorded on this certificate.

A. Description of original monument and accessories and/or subsequent restoration:

H-3 Set post - J. Wampler, 1822.  
Ash 14" S 87° E 21 L.  
Ash 14" S 87° W 27 L.  
No evidence of post or witnesses found.

H-5 Set post - J. Wampler, 1822.  
Ash 30" S 3-1/2° W 25 L.  
Sugar 13" N 6° W 17 L.  
No evidence of post or witnesses found.

L.C.R.C. - L. 2, P. 175 - 1973 - Jones (MDOT); L. 4, P. 180 - 1977 - Parish.  
S.C.R.C. found 3/4" iron pipe 11-18-75 and placed mon. box 7-11-87.  
Recorded Survey - L. 1355, P. 876 - 1972.  
5 record plats tied to corner.

L.C.R.C. - L. 1, P. 265 - 1972 - Jones (MDOT).  
S.C.R.C. found 5/8" iron bar 6-18-79.  
Recorded Surveys - L. 1497, P. 1088 - 1977; L. 1555, P. 975 - 1977; L. 1423, P. 724 - 1974.  
5 record plats tied to corner.

B. Description of corner evidence found and/or method applied in restoring or reestablishing corner:

H-3 Found 1" pipe (3/4" interdia.) (1/2" pipe per L.C.R.C. - L. 2, P. 175) in mon. box (L.C.R.C. - L. 4, P. 180) per S.C.R.C. and 1 recorded witness on L.C.R.C. - L. 2, P. 175. Monument accepted as best available evidence of the position of the original corner. Accepted by Saginaw County Peer Review Group on 9-23-93.

H-5 Found 1/2" square iron in mon. box per L.C.R.C. - L. 1, P. 265. Monument accepted as the best available evidence of the position of the original corner. Accepted by Saginaw County Peer Review Group on 9-23-93.

C. Description of monument for corner and accessories established to perpetuate locating the position of the corner:

H-3 Replaced 1" pipe with Saginaw County 3" brass cap on 5/8" rebar in mon. box.  
N 29° E 19.62' to chiseled 'x' on N side manhole.  
N 10° E 52.48' to 60-D spike in W side 12" Ash.  
S 9° W 35.90' to chiseled 'x' E side concrete rim at C.B.  
S 79° W 78.77' chiseled 'x' N rim manhole.  
N 40° E (R&M) 39.20' (39.23-R) to nail and tag in NW side U.P.

H-5 Replaced 1/2" square iron with Saginaw County 3" brass cap on 5/8" rebar in mon. box.  
N 10° E (R&M) 45.35' (45.18'R) to MDOT tag in U.P.  
N 58° E 101.42' to SE corner duplex.  
N 32° W 125.82' to SE corner House #3520.  
S 60° W 146.59' to NE corner House #3525.  
S 30° E 125.23' to NW corner concrete porch at House #3481.

Signed by Craig W. McVean Date 12-1-93  
Surveyor's Michigan License No. 39088

