

NOV 21 1997

COMMISSION

LIBER

2 PAGE 139

REMONUMENTATION
LAND CORNER RECORDATION CERTIFICATE
Filing Requirement of Act 74, Mich. P.A. 1970

RECEIVED FOR RECORD

97 SEP -9 AM 8:58

LIBER NO. 2 PAGE NO. 139
ESTHER LEE
REGISTER OF DEEDS
SANILAC CO., MICHIGAN

For corners in

Sanilac

(County)

Located In:

Corner Code #

- 1. Public Land Survey T 11NR13E M -13
T R
T R
T R
- 2. Property Controlling S T R
in Section S T R
3. Miscellaneous S T R
Property in Sec. S T R

Page 2

Register of Deeds Stamp & File Number

- 4. Lot No. _____, Recorded Plat _____
- 5. Private Claims _____

I, John A Milletics, in a field survey on June 21, 19 97 do hereby state that under requirements of P.A. 74, Michigan P.A. of 1970, the corner points mentioned in lines 1 and 2 above were in conformance with regulations and rules therefore as required in the current manual of survey instructions of the United States Department of the Interior, Bureau of Land Management or by a decree of a Court of Law and /or that the corner points mentioned in lines 3, 4 and 5 above were in conformance with the rules of the Michigan Board of Land Surveyors or by a Decree of a Court of Law; established, re-established, monumented, recovered, found as expressed below:

NOTE: Not more than 2 corners, all in the same town and range, may be recorded on this certificate.

	A	B	C	D	E	F	G	H	I	J	K	L	M
1													
2	6		5		4		3		2		1		
3													
4	7		8		9		10		11		12		
5													
6	18		17		16		15		14		13		
7													
8	19		20		21		22		23		24		
9													
10	30		29		28		27		26		25		
11													
12	31		32		33		34		35		36		
13													

A. Description of original monument and accessories and/or subsequent restoration:

M -13

GLO Notes

Elm 24 N75°E 43

Elm 16 N75°W 15

Hemlock 10 N34°E 37½

Elm 16 N75°W 15

APPROVED PEER BOARD MEETING

Aug 18, 1997 JM

B. Description of corner evidence found and/or method applied in restoring or reestablishing corner:

M -13

SE Corner Section 36 T11N-R13E

Found Monu Box in place - removed by the Sanilac County Road Comm. during reconstruction of Road - Replaced using Act 74 as recorded in Liber Page 411

C. Description of monument for corner and accessories established to perpetuate locating the position of the corner:

M -13

SE Corner Section 36 T11N-R13E

MONU BOX with iron and cap

South 18.20 feet to the West leg of a Road Sign

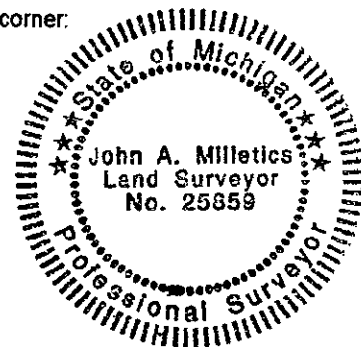
S05°E 18.25 feet to the East leg of a Road Sign

N15°W 39.88 feet to a Stop Sign

N70°W 56.65 feet to a Road Sign

N30°E 54.00 to a Tele Box

N45°W 29.00 feet to the North end of a 42" CMP



Signed by *[Signature]*

Date Aug 11, 1997

Surveyor's Michigan License No. 25859