

RECEIVED
DEPARTMENT

1994 SEP 20 PM 2:20

REGISTER OF DEEDS
ST. CLAIR COUNTY

ST. CLAIR COUNTY, MICHIGAN OFFICIAL GOVERNMENT CORNER



LAND CORNER RECORDATION CERTIFICATE
Filing Requirement of Act 74, Mich. P.A. 1970

	Located In:	Corner Code #
1. Public Land Survey	T <u>6N</u> R <u>13E</u>	<u>B-1</u>
	T _____ R _____	_____
	T _____ R _____	_____
	T _____ R _____	_____
2. Property Controlling in Section	S _____ T _____ R _____	<u>Sec. #1</u>
	S _____ T _____ R _____	_____
3. Miscellaneous Property in Sec.	S _____ T _____ R _____	_____
	S _____ T _____ R _____	_____

Register of Deeds Stamp & File Number

4. Lot No. _____, Recorded Plat _____
 5. Private Claims _____

	A	B	C	D	E	F	G	H	I	J	K	L
2	6	5	4	3	2	1						
3												
4	7	8	9	10	11	12						
5												
6	18	17	16	15	14	13						
7												
8	19	20	21	22	23	24						
9												
10	30	29	28	27	26	25						
11												
12	31	32	33	34	35	36						
13												

Michael J. Rossow May 13, 1994

I, _____, in a field survey on _____, 19____, do hereby certify that under requirements of P.A. 74, Michigan P.A. of 1970, the corner points mentioned in lines 1 and 2 above were in conformance with regulations and rules therefore as required in the current manual of survey instructions of the United States Department of the Interior, Bureau of Land Management or by a decree of a Court of Law and/or that the corner points mentioned in lines 3, 4 and 5 above were in conformance with the rules of the Michigan Board of Land Surveyors or by a Decree of a Court of Law; established, re-established, monumented, re-monumented, recovered, found as expressed below:

NOTE: Not more than 1 corner, may be recorded on this certificate.

A. Description of original monument and accessories and/or subsequent restoration:

Corner was not set in original Government Survey.
 Corner not identified in old St. Clair Co. Surveyors Record.
 No Recorded Act 74 nor Act 132 Certificates filed to either identify or set corner.

STATE PLAIN COORDINATES

N. _____

E. _____

ELEVATION _____

B. Description of corner evidence found and/or method applied in restoring or reestablishing corner:

Set North 1/4 Corner of Section 6, T.6N.,R.13E. 40 Chains (2640') from its Northeast corner on line between the South 1/4 corner and the Southeast corner. Both of Section 31, T.7N.,R.13E.

C. Description of monument for corner and accessories established to perpetuate locating the position of the corner:

1/2" Rebar set with I.D. #24615 Cap.
 86.27' NW to set P.K. and County Tag in P. Pole.
 36.42' SE to set P.K. and County Tag in Mail Box Post
 86.15' SW to set P.K. and County Tag in GTE Pole.
 395.90' ENE to set P.K. and County Tag in Guard Rail Post.



SEE ATTACHED SKETCH FOR ADDITIONAL INFORMATION.

Signed by Michael J. Rossow
 Surveyor's Michigan License No. 24615

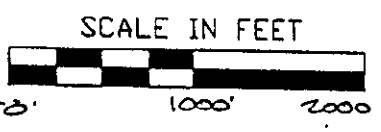
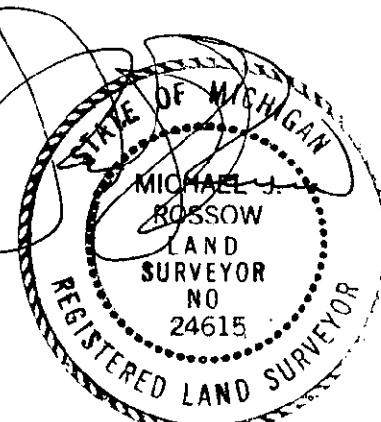
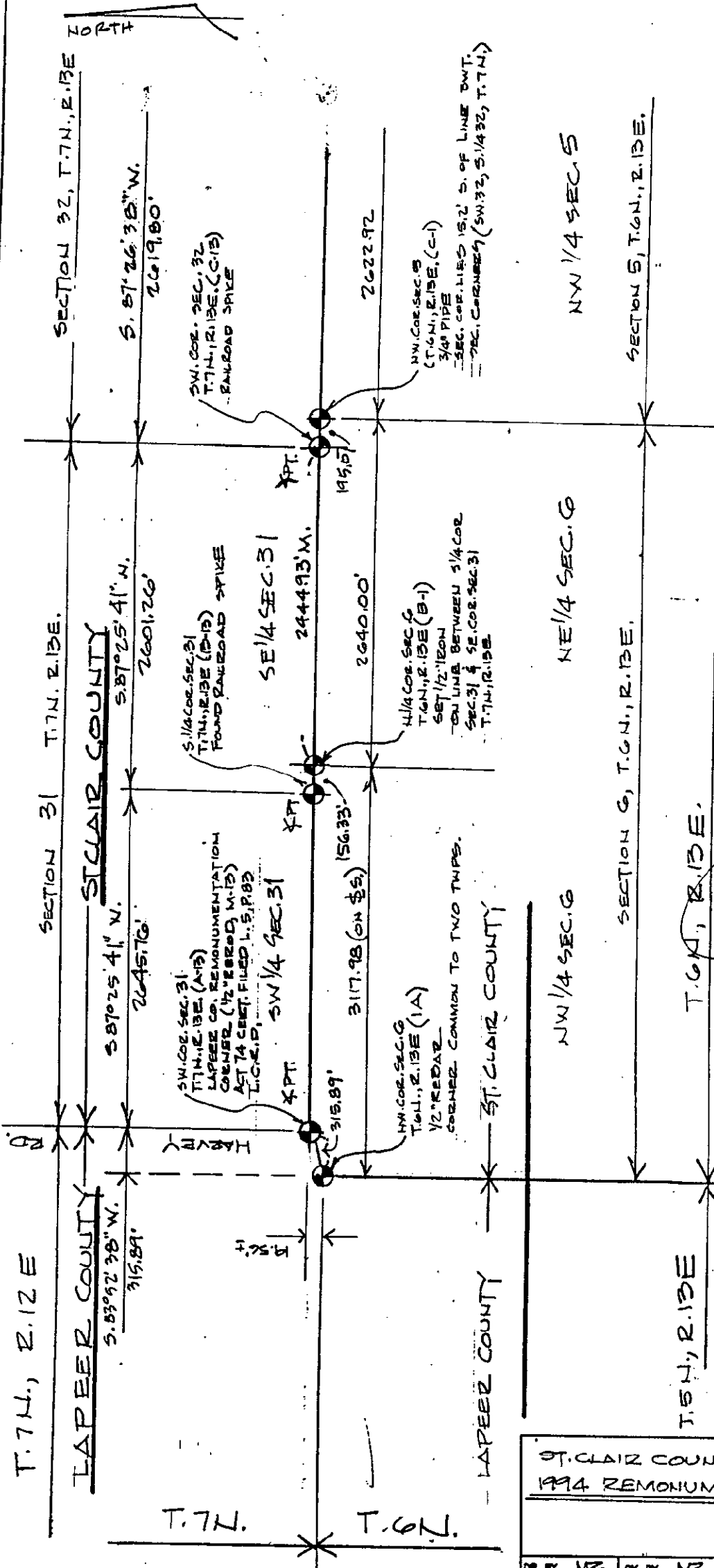
Date May 13, 1994
 PA 345-1990
 PEER COMMITTEE
 APPROVED 6-17-94

APPROVED AS AN OFFICIAL GOVERNMENT CORNER BY ST. CLAIR COUNTY:

Signed By: _____
St. Clair County Land Surveyor

Surveyor's Michigan License No. _____

Date
LIBER 007 PAGE 275



LEGEND

○	SET IRON
●	FOUND IRON
○	RECORDED
○	MEASURED
○	CALCULATED
—x—x—	FENCE
—x—x—	GOVT. CORNER

ST. CLAIR COUNTY, MICHIGAN
1994 REMONUMENTATION PROGRAM

DR BY NZ CK BY NZ SHEET NO 8 OF SHEETS
 SCALES 1" = 1000' DATE 4-26-94

T.R. VALENTINE & ASSOCIATES INC.
 Consulting Engineers, Architects & Land Surveyors
 901 Huron Ave., Suite 8
 Port Huron Michigan 48060
 (313) 985-4848

NOTE: ALL DISTANCES & ANGLES
 MEASURED ELECTRONICALLY