

RECEIVED
COUNTY CLERK

SEP 20 PM 2:20

REGISTER OF DEEDS
ST. CLAIR COUNTY

ST. CLAIR COUNTY, MICHIGAN OFFICIAL GOVERNMENT CORNER



LAND CORNER RECORDATION CERTIFICATE
Filing Requirement of Act 74, Mich. P.A. 1970

Located In: Corner Code #

1. Public Land Survey	T	6N	R	13E	C-1
	T		R		
	T		R		
	T		R		
2. Property Controlling in Section	S		T	R	Seg. #1
	S		T	R	
3. Miscellaneous Property in Sec.	S		T	R	
	S		T	R	

Register of Deeds Stamp & File Number

4. Lot No. _____, Recorded Plat _____

5. Private Claims _____

Michael J. Rossow

May 2,

94

I, _____, in a field survey on _____, 19____, do hereby certify that under requirements of P.A. 74, Michigan P.A. of 1970, the corner points mentioned in lines 1 and 2 above were in conformance with regulations and rules therefore as required in the current manual of survey instructions of the United States Department of the Interior, Bureau of Land Management or by a decree of a Court of Law and/or that the corner points mentioned in lines 3, 4 and 5 above were in conformance with the rules of the Michigan Board of Land Surveyors or by a Decree of a Court of Law; established, re-established, monumented, re-monumented, recovered, found as expressed below:

NOTE: Not more than 1 corner, may be recorded on this certificate.

A. Description of original monument and accessories and/or subsequent restoration:
Post set for original corner (Gov't Survey).

St. Clair Co. Surveyors Record list nothing.

Act 74 Cert. filed L.5,P.256 lists a 3/4" pipe for corner.

B. Description of corner evidence found and/or method applied in restoring or reestablishing corner:

Act 74 Cert. filed in L.5,P.256 lists a 3/4" pipe as corner.

All witnesses exist

Nail and Tag # 14096 in Power Pole NNW 61.95'.

Nail and Tag # 14096 in Power Pole SW 70.83'.

Nail and Washer in 24" Maple SSW 32.30'.

C. Description of monument for corner and accessories established to perpetuate locating the position of the corner:

3/4" pipe. (15.2' South of line between section corners, SW 32, S~~W~~ 32, T.7N., R13.E)

129.00' ESE to set P.K. and County Tag in 24" Cottonwood.

61.81' NNW to set P.K. and County Tag in P. Pole.

31.97' SSW to set P.K. and County Tag in 24" Maple.

71.01' SW to set P.K. and County Tag in P. Pole.

3.0± North to center of Burt Road.

9.0± East to remains of occupation line to South.

SEE ATTACHED SKETCH FOR ADDITIONAL INFORMATION.

Signed by _____

Michael J. Rossow

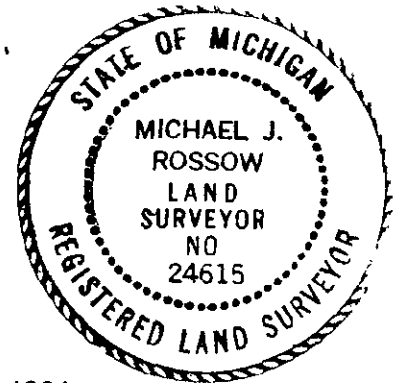
Surveyor's Michigan License No. 24615

Date May 13, 1994

PA 345-1990

PEER COMMITTEE

APPROVED 6-17-94



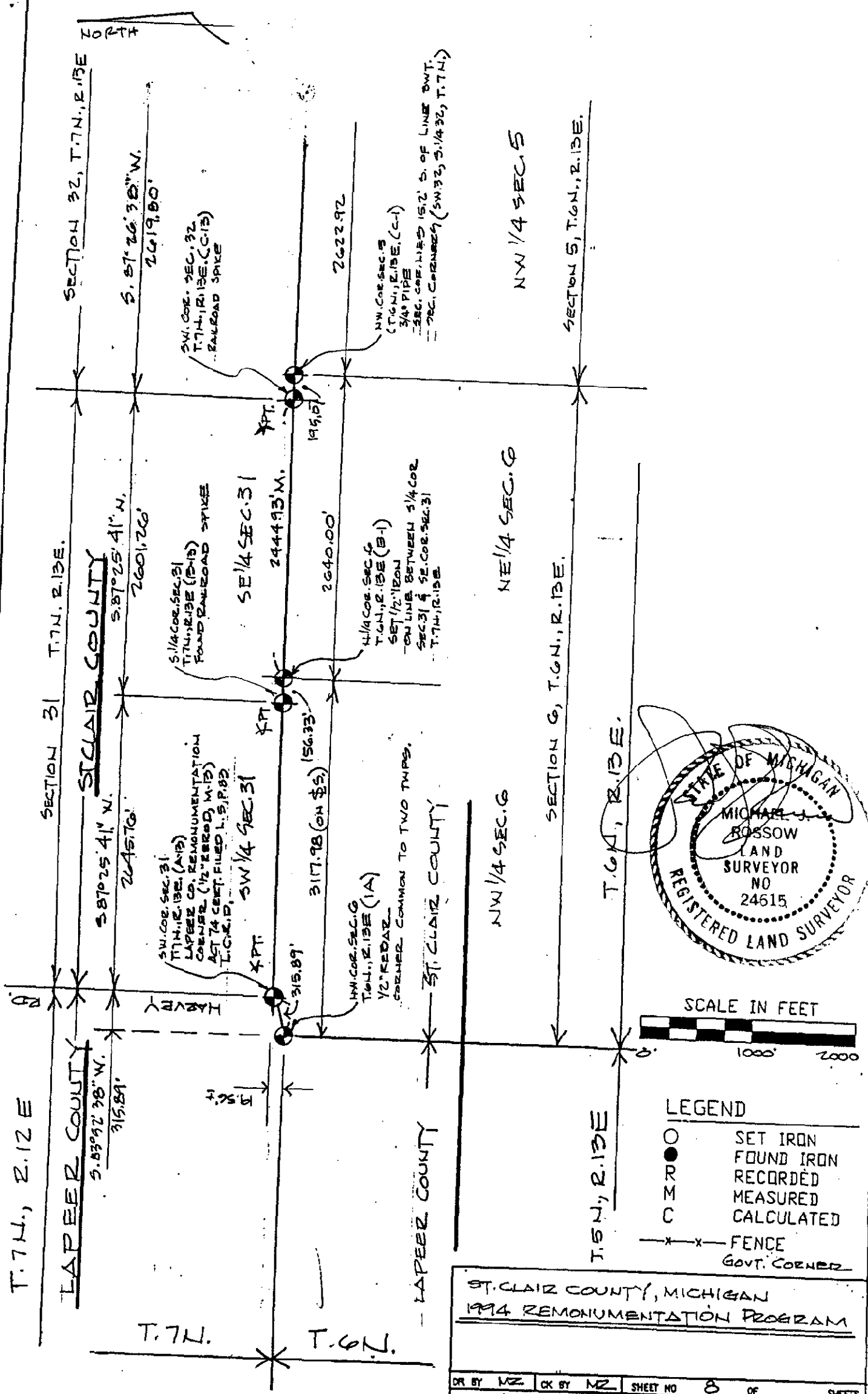
APPROVED AS AN OFFICIAL GOVERNMENT CORNER BY ST. CLAIR COUNTY:

Signed By: _____

St. Clair County Land Surveyor

Surveyor's Michigan License No.

LIBER 007 PAGE 273



SECTION 32, T.7N., R.13E.
 5.87°26'38"W.
 2619.00'

SECTION 31 T.7N., R.13E.
 5.87°25'41"W.
 2601.26'

SECTION 6, T.6N., R.13E.
 5.83°22'38"W.
 315.89'

SECTION 5, T.6N., R.13E.
 5.87°25'41"W.
 2601.26'

SW. COR. SEC. 32
 T.7N., R.13E. (C-15)
 RAILROAD SPIKE

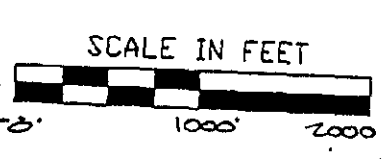
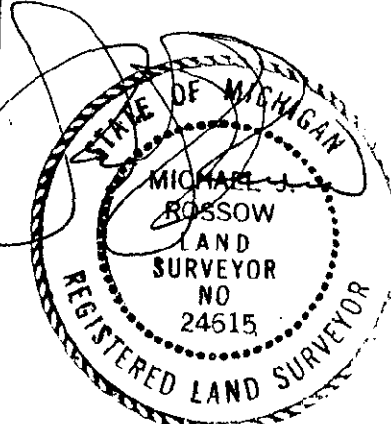
SW. COR. SEC. 31
 T.7N., R.13E. (B-15)
 FOUND RAILROAD SPIKE

SW. COR. SEC. 31
 T.7N., R.13E. (A-15)
 LAPEER CO. REMONUMENTATION
 CORNER (1/2" IRON D, M-15)
 ACT 74 CENT. FILED L.S.P.82
 L.C.R.D.

SW. COR. SEC. 31
 T.6N., R.13E. (A)
 1/2" IRON D
 FENCE COMMON TO TWO TOWNS.

NW. COR. SEC. 32
 (T.6N., R.13E. (C-1)
 3/4" PIPE
 SEC. COR. LINE 15.2' S. OF LINE BWT.
 SEC. CORNER 9 (SW 32, S. 1/4 32, T.7N.)

NE. COR. SEC. 31
 T.6N., R.13E. (B-1)
 SET 1/2" IRON
 ON LINE BETWEEN S. 1/4 COR.
 SEC. 31 & SE. COR. SEC. 31
 T.7N., R.13E.



LEGEND

○	SET IRON
●	FOUND IRON
○	RECORDED
○	MEASURED
○	CALCULATED
—x—x—	FENCE
×	GOVT. CORNER

ST. CLAIR COUNTY, MICHIGAN
 1994 REMONUMENTATION PROGRAM

DR BY MZ	CK BY MZ	SHEET NO. 8 OF	SHEETS
SCALE 1" = 1000'		DATE 4-26-94	
T.R. VALENTINE & ASSOCIATES INC. Consulting Engineers, Architects & Land Surveyors 901 Huron Ave., Suite 8 Port Huron Michigan 48060 (313) 985-4848			
DWG NO.	JOB NO.	BK	

NOTE: ALL DISTANCES & ANGLES
 MEASURED ELECTRONICALLY