

RECEIVED
REGISTERED DEEDS

1994 SEP 20 AM 2:20

REGISTERED DEEDS
ST. CLAIR COUNTY

ST. CLAIR COUNTY, MICHIGAN OFFICIAL GOVERNMENT CORNER



LAND CORNER RECORDATION CERTIFICATE
Filing Requirement of Act 74, Mich. P.A. 1970

	Located In:	Corner Code #
1. Public Land Survey	T <u>6N</u> R <u>13E</u>	<u>E-1</u>
	T _____ R _____	_____
	T _____ R _____	_____
	T _____ R _____	_____
2. Property Controlling in Section	S _____ T _____ R _____	<u>Seg. #1</u>
	S _____ T _____ R _____	_____
3. Miscellaneous Property in Sec.	S _____ T _____ R _____	_____
	S _____ T _____ R _____	_____

Register of Deeds Stamp & File Number

4. Lot No. _____, Recorded Plat _____
5. Private Claims _____

Michael J. Rossow May 12, 94

I, _____, in a field survey on _____, 19____, do hereby certify that under requirements of P.A. 74, Michigan P.A. of 1970, the corner points mentioned in lines 1 and 2 above were in conformance with regulations and rules therofore as required in the current manual of survey instructions of the United States Department of the Interior, Bureau of Land Management or by a decree of a Court of Law and/or that the corner points mentioned in lines 3, 4 and 5 above were in conformance with the rules of the Michigan Board of Land Surveyors or by a Decree of a Court of Law; established, re-established, monumented, re-monumented, recovered, found as expressed below:

	A	B	C	D	E	F	G	H	I	J	K	L
2	6	5	4	3	2							
3												
4	7	8	9	10	11	12						
5												
6	18	17	16	15	14	13						
7												
8	19	20	21	22	23	24						
9												
10	30	29	28	27	26	25						
11												
12	31	32	33	34	35	36						
13												

NOTE: Not more than 1 corner, may be recorded on this certificate.

A. Description of original monument and accessories and/or subsequent restoration:
"Post" set for original corner (Gov't Survey).

St. Clair Co. Surveyors Record Lists a "Large Stone".

Act 74 Cert. filed in L.1,P.34 list a 1/2" pipe;
L.5,P.312 Cert. also list a 1/2" pipe as corner.

STATE PLAIN COORDINATES

N. _____

E. _____

ELEVATION _____

B. Description of corner evidence found and/or method applied in restoring or reestablishing corner:

Found a 1/2" pipe per Act 74 Cert. filed in L.5,P.312.
P.K. in 6" Oak. S. 38.38'.
Nail & Washer in Pear tree SW 80.53'.
P.K. in 30" Oak NW. 196.35'.

C. Description of monument for corner and accessories established to perpetuate locating the position of the corner:

1/2" pipe (2.25' North of line between section corners,
SW 32, S 33, T.7N., R.13E.)
38.34' S to set P.K. and County Tag in 12" Oak.
420.56' ESE to set P.K. and County Tag in 36" Oak.
80.50' SW to set P.K. and County Tag in 12" Pear Tree.
196.23' NW to set P.K. and County Tag in 36" Oak.



SEE ATTACHED SKETCH FOR ADDITIONAL INFORMATION.

Signed by Michael J. Rossow
Surveyor's Michigan License No. 24615

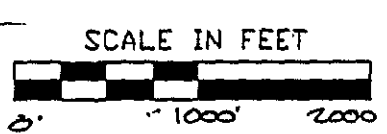
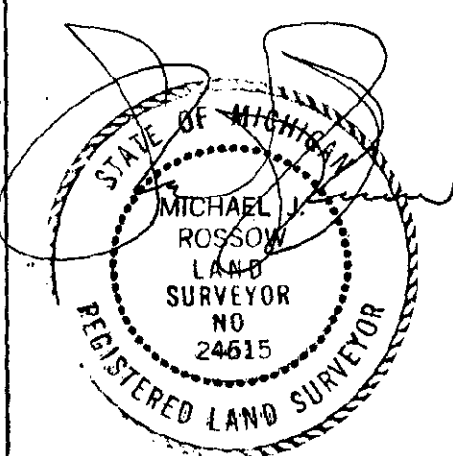
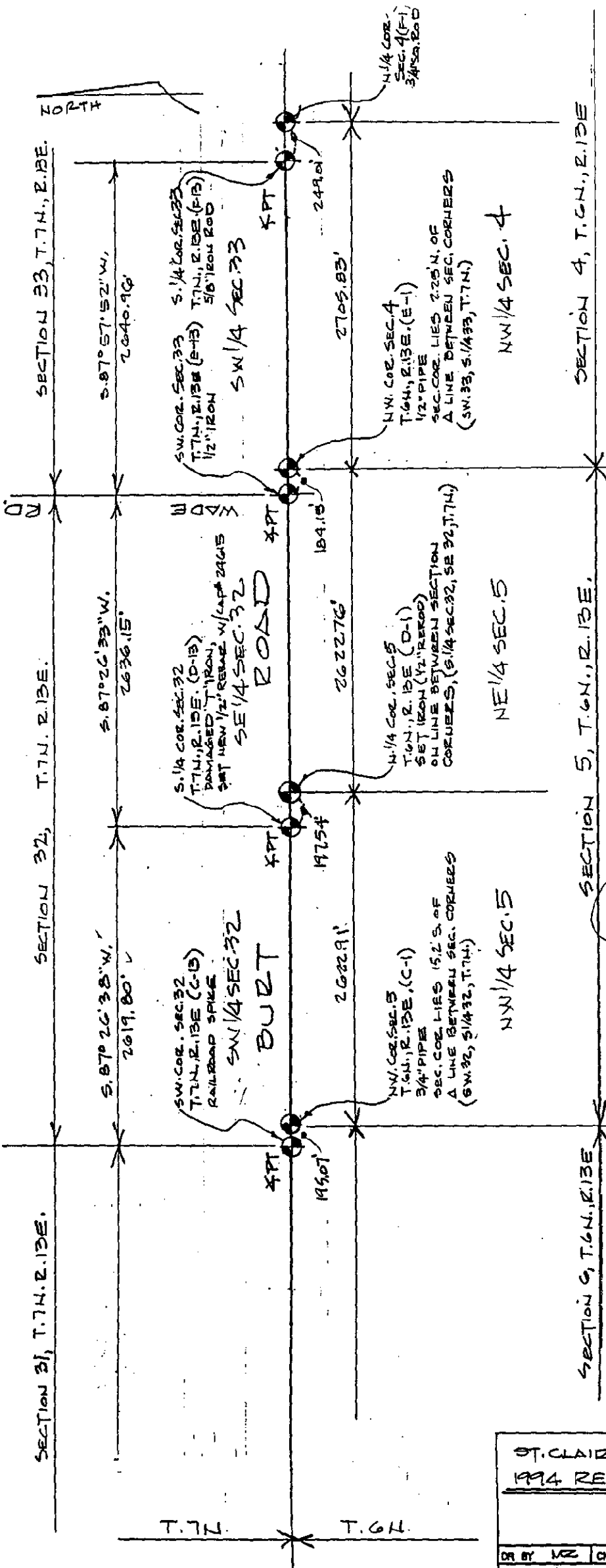
Date May 13, 1994
PA 345-1990
PEER COMMITTEE
APPROVED 6-24-94

APPROVED AS AN OFFICIAL GOVERNMENT CORNER BY ST. CLAIR COUNTY:

Signed By: _____
St. Clair County Land Surveyor

Surveyor's Michigan License No. _____

Date _____
LIBER 007 PAGE 269



LEGEND

O	SET IRON
●	FOUND IRON
R	RECORDED
M	MEASURED
C	CALCULATED
-x-x-	FENCE
*	GOVT. CORNER

ST. CLAIR COUNTY, MICHIGAN
1994 REMONUMENTATION PROGRAM

DR BY	MZ	CK BY	MZ	SHEET NO	7	OF	SHEETS
SCALE	1" = 1000'		DATE	4-26-94			
<p>T.R. VALENTINE & ASSOCIATES INC. Consulting Engineers, Architects & Land Surveyors</p> <p>901 Huron Ave. Suite 8 Port Huron Michigan 48060 (313) 985-4848</p>							
JOB NO			JOB NO				

NOTE: ALL DISTANCES & ANGLES MEASURED ELECTRONICALLY