

RECEIVED
 SEP 20 PM 2:19
 REGISTER OF DEEDS
 ST. CLAIR COUNTY

ST. CLAIR COUNTY, MICHIGAN
 OFFICIAL GOVERNMENT CORNER



LAND CORNER RECORDATION CERTIFICATE
 Filing Requirement of Act 74, Mich. P.A. 1970

	Located In:	Corner Code #
1. Public Land Survey	T <u>6N</u> R <u>13E</u>	<u>L-1</u>
	T _____ R _____	_____
	T _____ R _____	_____
	T _____ R _____	_____
2. Property Controlling in Section	S _____ T _____ R _____	<u>Sec. #1</u>
	S _____ T _____ R _____	_____
3. Miscellaneous Property in Sec.	S _____ T _____ R _____	_____
	S _____ T _____ R _____	_____

Register of Deeds Stamp & File Number

4. Lot No. _____, Recorded Plat _____
 5. Private Claims _____

Michael J. Rossow May 2, 1994

I, _____, in a field survey on _____, 19_____, do hereby certify that under requirements of P.A. 74, Michigan P.A. of 1970, the corner points mentioned in lines 1 and 2 above were in conformance with regulations and rules therefore as required in the current manual of survey instructions of the United States Department of the Interior, Bureau of Land Management or by a decree of a Court of Law and/or that the corner points mentioned in lines 3, 4 and 5 above were in conformance with the rules of the Michigan Board of Land Surveyors or by a Decree of a Court of Law; established, re-established, monumented, re-monumented, recovered, found as expressed below:

NOTE: Not more than 1 corner, may be recorded on this certificate.

A. Description of original monument and accessories and/or subsequent restoration:

This corner not set in original Government Survey.

St. Clair Co. Surveyors Recorded identifies this corner as a 1" Iron Pipe-Cook.

No Act 74 Cert. filed for this corner.

B. Description of corner evidence found and/or method applied in restoring or reestablishing corner:

Found 5/8" Rod with aid of SCCRC AD Plan #94, P.6, on file as St. Clair Co. Road Comm. Office.

C. Description of monument for corner and accessories established to perpetuate locating the position of the corner:

5/8" Rod. (0.39' North to line between section corners, S4 36, SE 36, T. 7N. R. 13E)

- 138.70' WNW to set P.K. and County Tag in P. Pole.
- 201.80' ENE to set P.K. and County Tag in P. Pole.
- 413.07' ESE to set P.K. and County Tag W. most Guard Rail Post S. Side Burt Rd.
- 1372.70' S to set P.K. and County Tag in 42" Oak.

SEE ATTACHED SKETCH FOR ADDITIONAL INFORMATION.

Signed by Michael J. Rossow
 Surveyor's Michigan License No. 24615

Date May 13, 1994
 PA 345-1990
 PEER COMMITTEE
 APPROVED 6-17-94

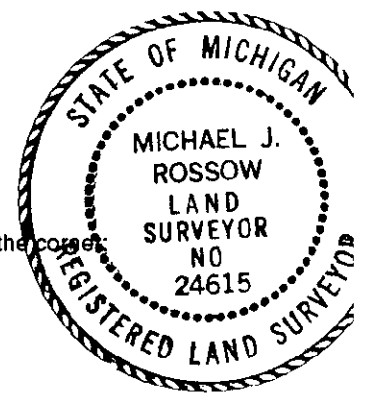
	A	B	C	D	E	F	G	H	I	J	K	L
2	6	5	4	3	2	1						
3												
4	7	8	9	10	11	12						
5												
6	18	17	16	15	14	13						
7												
8	19	20	21	22	23	24						
9												
10	30	29	28	27	26	25						
11												
12	31	32	33	34	35	36						
13												

STATE PLAIN COORDINATES

N. _____

E. _____

ELEVATION _____

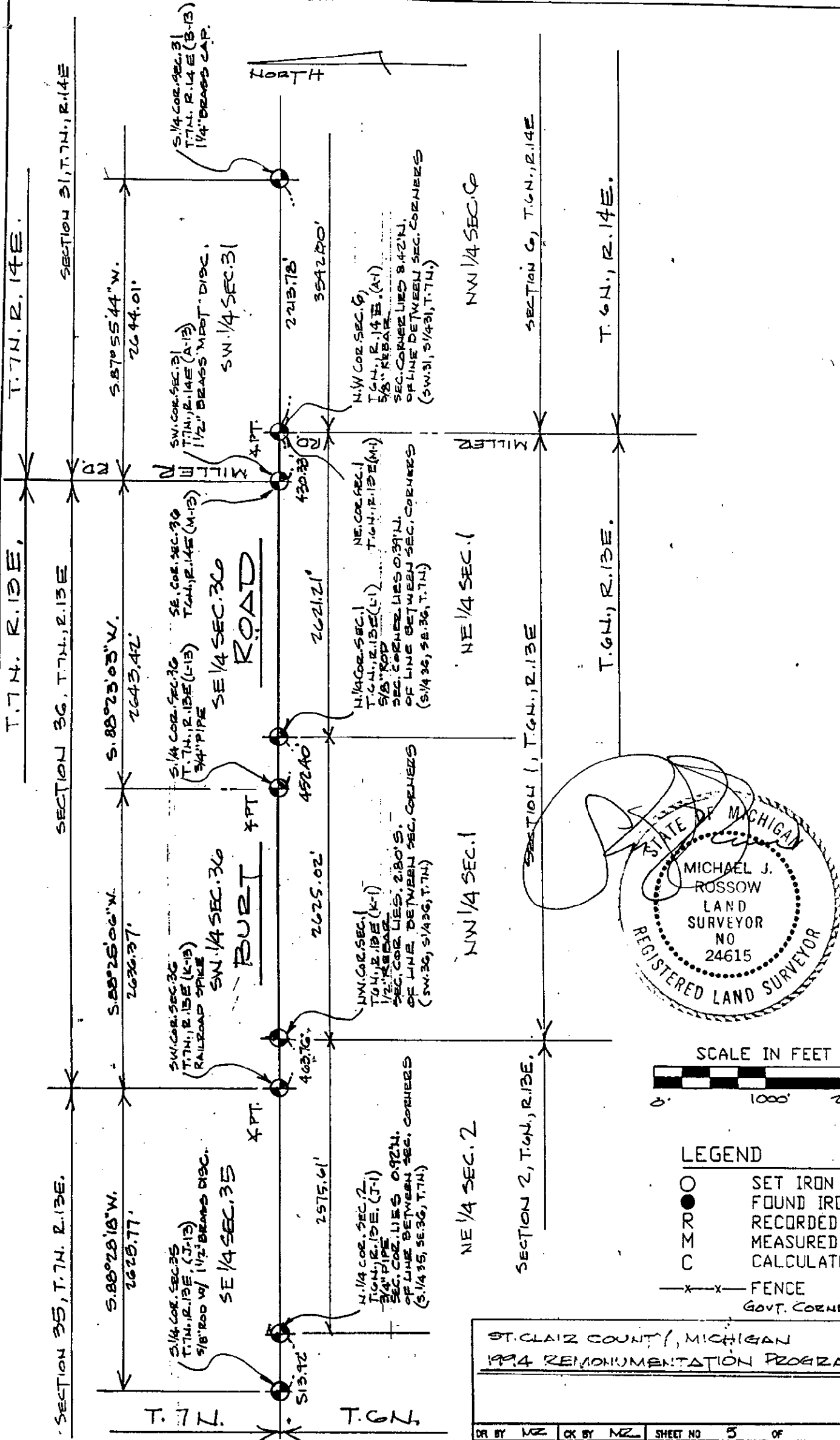


APPROVED AS AN OFFICIAL GOVERNMENT CORNER BY ST. CLAIR COUNTY:

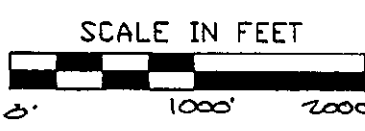
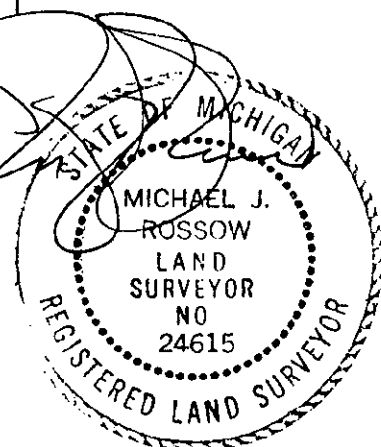
Signed By: _____
 St. Clair County Land Surveyor

Surveyor's Michigan License No. _____

Date _____
 LIBER 007 PAGE 255



NOTE: ALL DISTANCES & ANGLES
MEASURED ELECTRONICALLY



LEGEND

C	SET IRON
M	FOUND IRON
R	RECORDED
O	MEASURED
○	CALCULATED
—x—x—	FENCE
●	GOVT. CORNER

ST. CLAIR COUNTY, MICHIGAN 1994 REINDEMENTATION PROGRAM			
DR BY	MZ	CR BY	MZ
SHEET NO	5	OF	SHEETS
DATE	4-26-94		
T.R. VALENTINE & ASSOCIATES INC. Consulting Engineers, Architects & Land Surveyors		901 Huron Ave., Suite 8 Port Huron Michigan 48060 (313) 985-4848	
DWG NO	JOB NUMBER 007 PAGE 256		