

RECEIVED
ST. CLAIR COUNTY

ST. CLAIR COUNTY, MICHIGAN OFFICIAL GOVERNMENT CORNER



1991 SEP 20 PM 2:20
REGISTER OF DEEDS
ST. CLAIR COUNTY

LAND CORNER RECORDATION CERTIFICATE Filing Requirement of Act 74, Mich. P.A. 1970

	Located In:	Corner Code #
1. Public Land Survey	T <u>6N</u> R <u>14E</u>	<u>D-1</u>
	T _____ R _____	_____
	T _____ R _____	_____
	T _____ R _____	_____
2. Property Controlling in Section	S _____ T _____ R _____	<u>Dep. # 1</u>
	S _____ T _____ R _____	_____
3. Miscellaneous Property in Sec.	S _____ T _____ R _____	_____
	S _____ T _____ R _____	_____

Register of Deeds Stamp & File Number

4. Lot No. _____, Recorded Plat _____
5. Private Claims _____

	A	B	C	D	E	F	G	H	I	J	K	L
2	6	5	4	3	2	1						
3												
4	7	8	9	10	11	12						
5												
6	16	17	16	15	14	13						
7												
8	19	20	21	22	23	24						
9												
10	30	29	28	27	26	25						
11												
12	31	32	33	34	35	36						
13												

Michael J. Rossow April 26, 1994

I, _____, in a field survey on _____, 19____, do hereby certify that under requirements of P.A. 74, Michigan P.A. of 1970, the corner points mentioned in lines 1 and 2 above were in conformance with regulations and rules therefore as required in the current manual of survey instructions of the United States Department of the Interior, Bureau of Land Management or by a decree of a Court of Law and/or that the corner points mentioned in lines 3, 4 and 5 above were in conformance with the rules of the Michigan Board of Land Surveyors or by a Decree of a Court of Law; established, re-established, monumented, re-monumented, recovered, found as expressed below:

NOTE: Not more than 1 corner, may be recorded on this certificate.

A. Description of original monument and accessories and/or subsequent restoration:

This corner not set in Government Survey.

St. Clair Co. Record Lists "Large Stone" as corner.

Act 74 Cert. filed (L.4,P.49) & (L.6,P.243A).
(MDOT DISC) (F.L.R. 1 1/2")

B. Description of corner evidence found and/or method applied in restoring or reestablishing corner:

Found 1/2" Rebar per Cert. filed L.4,P.49 & L.6,P.243A.

C. Description of monument for corner and accessories established to perpetuate locating the position of the corner:

1/2" Rebar. (1.93' North of line between section corners, S 32, SE 32, T.7N., R.14E.)

- 72.58' NE to set P.K. and County Tag in 30" Oak.
- 88.64' SSE to set P.K. and County Tag in Utility Pole (1979).
- 98.83' NW to set P.K. and County Tag in 38" Oak.
- 80.47' ESE to set P.K. and County Tag in 4" x 6" Post.
- 3.04' South of Axle Shaft (County Road P.I.)

SEE ATTACHED SKETCH FOR ADDITIONAL INFORMATION.

Signed by Michael J. Rossow
Surveyor's Michigan License No. 24615

Date May 13, 1994
PA 345-1990
PEER COMMITTEE
APPROVED 6-24-94



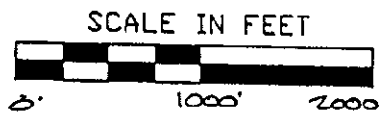
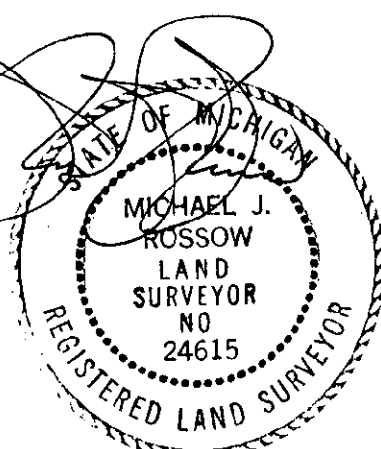
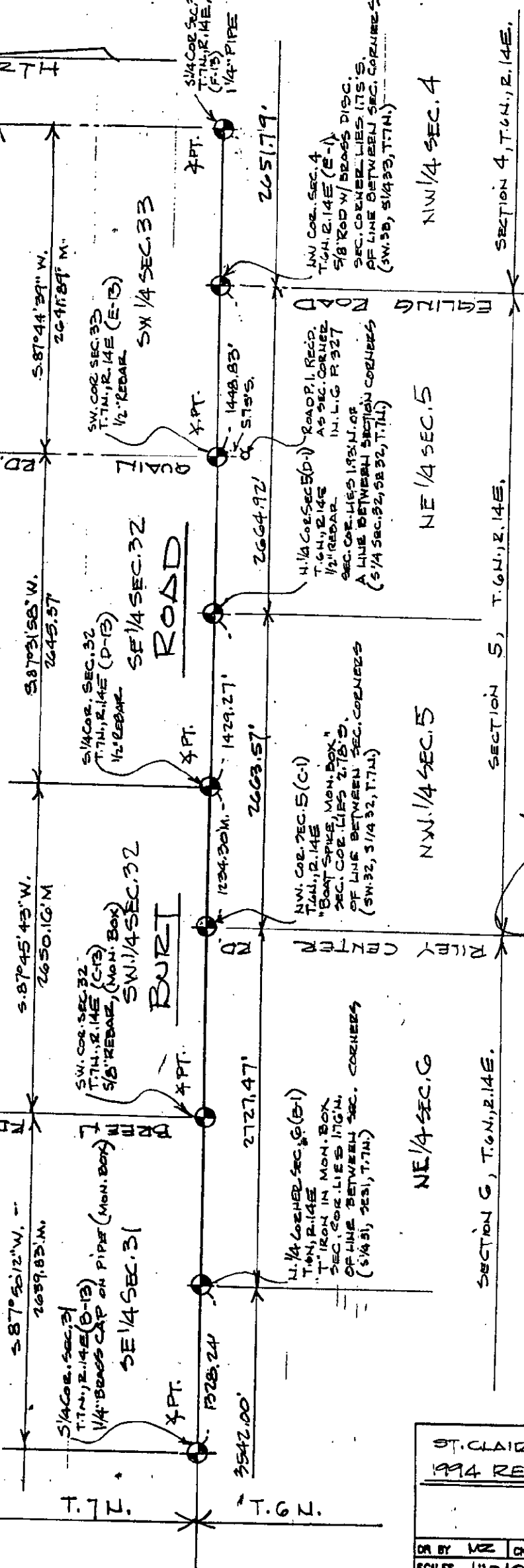
APPROVED AS AN OFFICIAL GOVERNMENT CORNER BY ST. CLAIR COUNTY:

Signed By: _____
St. Clair County Land Surveyor

Surveyor's Michigan License No. _____

NORTH

SECTION 51, T.7N., R.14E
SECTION 52, T.7N., R.14E
SECTION 53, T.7N., R.14E
SECTION 5, T.6N., R.14E
SECTION 6, T.6N., R.14E
SECTION 7, T.6N., R.14E
SECTION 4, T.6N., R.14E



LEGEND

- O SET IRON
- FOUND IRON
- R RECORDED
- M MEASURED
- C CALCULATED
- x-x- FENCE
- Govt. CORNER

ST. CLAIR COUNTY, MICHIGAN
1994 REMONUMENTATION PROGRAM

DR BY MZ CK BY MZ SHEET NO. 4 OF SHEETS

SCALE 1" = 1000' DATE 4-26-94

T.R. VALENTINE & ASSOCIATES INC.
901 Huron Ave., Suite 8
Port Huron Michigan 48060
Consulting Engineers, Architects & Land Surveyors
(313) 985-4848

NOTE: ALL DISTANCES & ANGLES
MEASURED ELECTRONICALLY