

RECEIVED  
ST. CLAIR COUNTY

1994 SEP 20 PM 2:20

REGISTER OF DEEDS  
ST. CLAIR COUNTY

# ST. CLAIR COUNTY, MICHIGAN OFFICIAL GOVERNMENT CORNER



LAND CORNER RECORDATION CERTIFICATE  
Filing Requirement of Act 74, Mich. P.A. 1970

	Located In:	Corner Code #
1. Public Land Survey	T <u>6N</u> R <u>14E</u>	<u>F-1</u>
	T _____ R _____	_____
	T _____ R _____	_____
2. Property Controlling in Section	S _____ T _____ R _____	<u>Seg. #1</u>
	S _____ T _____ R _____	_____
3. Miscellaneous Property in Sec.	S _____ T _____ R _____	_____
	S _____ T _____ R _____	_____

Register of Deeds Stamp & File Number

4. Lot No. \_\_\_\_\_, Recorded Plat \_\_\_\_\_  
5. Private Claims \_\_\_\_\_

A	B	C	D	E	F	G	H	I	J	K	L
2	6	5	4	3	2	1					
3											
4	7	8	9	10	11	12					
5											
6	18	17	16	15	14	13					
7											
8	19	20	21	22	23	24					
9											
10	30	29	28	27	26	25					
11											
12	31	32	33	34	35	36					
13											

Michael J. Rossow March 9, 94

I, \_\_\_\_\_, in a field survey on \_\_\_\_\_, 19\_\_\_\_, do hereby certify that under requirements of P.A. 74, Michigan P.A. of 1970, the corner points mentioned in lines 1 and 2 above were in conformance with regulations and rules therefore as required in the current manual of survey instructions of the United States Department of the Interior, Bureau of Land Management or by a decree of a Court of Law and/or that the corner points mentioned in lines 3, 4 and 5 above were in conformance with the rules of the Michigan Board of Land Surveyors or by a Decree of a Court of Law; established, re-established, monumented, re-monumented, recovered, found as expressed below:

NOTE: Not more than 1 corner, may be recorded on this certificate.

A. Description of original monument and accessories and/or subsequent restoration:

"This corner not set in Government Surveys".  
"Ford Axle Shaft" Identified in St. Clair Co. Surveyors Record"  
  
Act 74 Cert. files L.4,P.53.(MDOT)  
L.4,P.274 Rescinds Cert. L.4,P.150.

STATE PLAIN COORDINATES

N. \_\_\_\_\_

E. \_\_\_\_\_

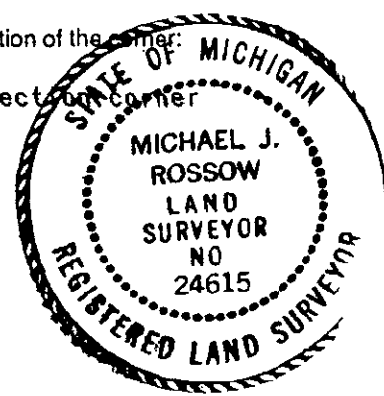
ELEVATION \_\_\_\_\_

B. Description of corner evidence found and/or method applied in restoring or reestablishing corner:

5/8" Rod with 1 1/2" brass disc. per. Cert. filed L.4,P.53.

C. Description of monument for corner and accessories established to perpetuate locating the position of the corner:

5/8" Rod with 1 1/2" brass disc. (4.76' South to line between section corner S& 33, SE 33, T.7N.,R.14E.)  
53.57' SSW to set P.K. and County Tag in P. Pole.  
59.59' SW to set P.K. and County Tag in 4" Poplar  
175.15' NW to set P.K. and County Tag in 12" Tree  
405.54' ESE to set P.K. and County Tag in P. Pole.



SEE ATTACHED SKETCH FOR ADDITIONAL INFORMATION.

Signed by Michael J. Rossow  
Surveyor's Michigan License No. 24615

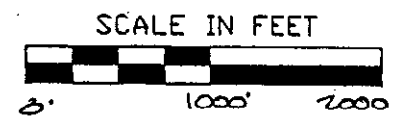
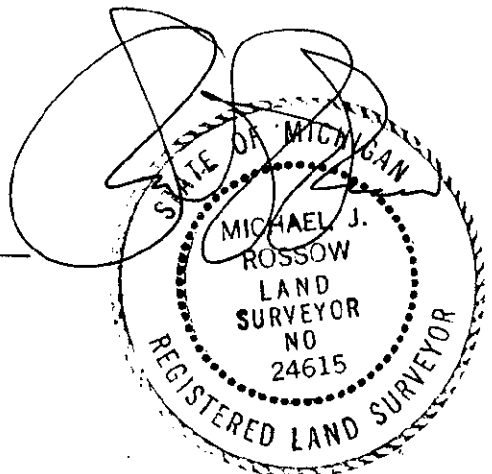
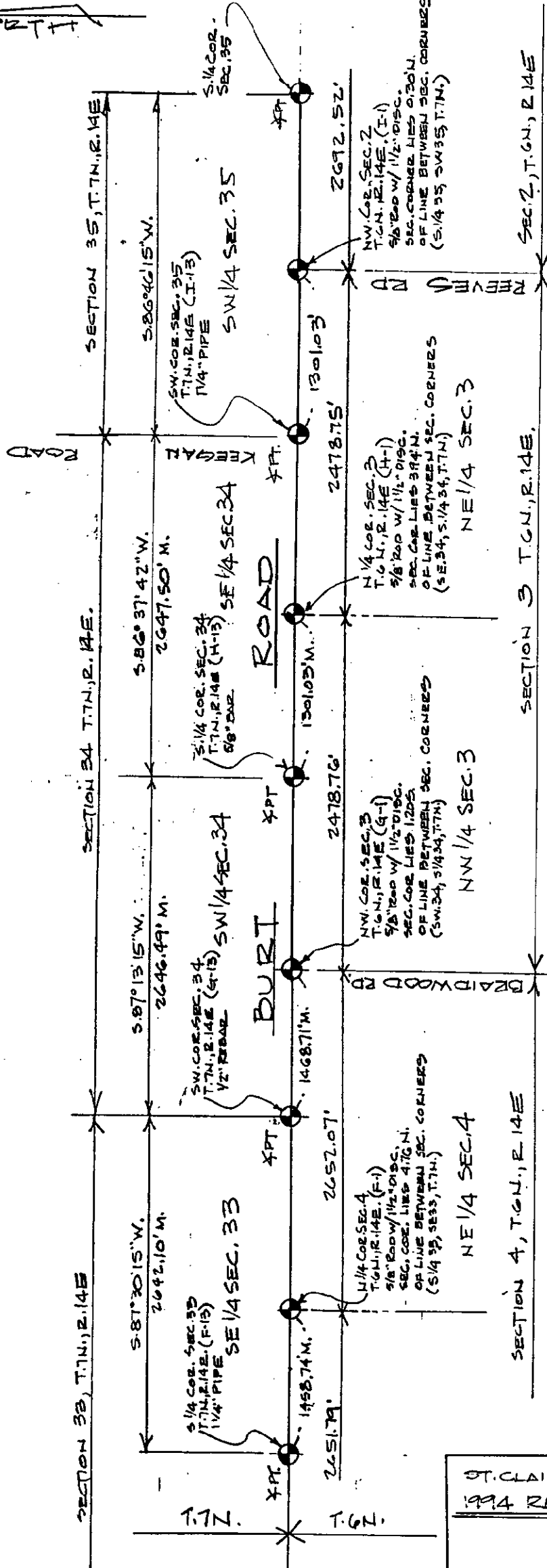
Date May 13, 1994  
PA 345-1990  
PEER COMMITTEE  
APPROVED 6-17-94

APPROVED AS AN OFFICIAL GOVERNMENT CORNER BY ST. CLAIR COUNTY:

Signed By: \_\_\_\_\_  
St. Clair County Land Surveyor

Surveyor's Michigan License No. \_\_\_\_\_

HORTH



LEGEND

O	SET IRON
●	FOUND IRON
○	RECORDED
○	MEASURED
○	CALCULATED
—x—x—	FENCE
—x—x—	GOVT. CORNER

ST. CLAIR COUNTY, MICHIGAN  
1994 REMONUMENTATION PROGRAM

DR BY	WZ	CK BY	MZ	SHEET NO	3	OF	SHEETS
SCALES	1" = 1000'		DATE	4-26-94			

T.R. VALENTINE & ASSOCIATES INC. 901 Huron Ave., Suite B  
Consulting Engineers, Port Huron Michigan 48060 (313) 985-4848  
Architects & Land Surveyors

NOTE: ALL DISTANCES & ANGLES  
MEASURED ELECTRONICALLY

DWG NO	JOB NO	DK
--------	--------	----