

RECEIVED
ST. CLAIR COUNTY

1994 SEP 20 PM 2:20

REGISTER OF DEEDS
ST. CLAIR COUNTY

ST. CLAIR COUNTY, MICHIGAN OFFICIAL GOVERNMENT CORNER

LAND CORNER RECORDATION CERTIFICATE
Filing Requirement of Act 74, Mich. P.A. 1970



	Located In:	Corner Code #
1. Public Land Survey	T <u>6N</u> R <u>14E</u>	<u>H-1</u>
	T _____ R _____	_____
	T _____ R _____	_____
	T _____ R _____	_____
2. Property Controlling in Section	S _____ T _____ R _____	<u>Sec. #1</u>
	S _____ T _____ R _____	_____
3. Miscellaneous Property in Sec.	S _____ T _____ R _____	_____
	S _____ T _____ R _____	_____

Register of Deeds Stamp & File Number

4. Lot No. _____, Recorded Plat _____
 5. Private Claims _____

Michael J. Rossow

February 21, 94

I, _____, in a field survey on _____, 19_____, do hereby certify that under requirements of P.A. 74, Michigan P.A. of 1970, the corner points mentioned in lines 1 and 2 above were in conformance with regulations and rules therefore as required in the current manual of survey instructions of the United States Department of the Interior, Bureau of Land Management or by a decree of a Court of Law and/or that the corner points mentioned in lines 3, 4 and 5 above were in conformance with the rules of the Michigan Board of Land Surveyors or by a Decree of a Court of Law, established, re-established, monumented, re-monumented, recovered, found as expressed below:

NOTE: Not more than 1 corner, may be recorded on this certificate.

A. Description of original monument and accessories and/or subsequent restoration:

This corner not set on Government Surveys

"Ford Axle Shaft" identified on St. Clair Co. Surveyors Record.

Act 74 Cert. filed L.4,P.57, (MDOT) & L.4,P.195.

B. Description of corner evidence found and/or method applied in restoring or reestablishing corner:

Found 5/8" Rod with 1 1/2" brass disc per Cert. L.4,P.57.

C. Description of monument for corner and accessories established to perpetuate locating the position of the corner:

5/8" Rod with 1 1/2" brass disc. (3.94' North of Line Between section corners SE 34, S 34, T.7N.R.14E.)

- 75.44' SSW to set P.K. and County Tag in P. Pole.
- 165.01' SW to set P.K. and County Tag in P. Pole.
- 55.65' NE to set P.K. and County Tag in 15" Tree.
- 290.40' ESE to set P.K. and County Tag in P. Pole.
- 9.50' South to Axle Shaft (County Road P.I.)

SEE ATTACHED SKETCH FOR ADDITIONAL INFORMATION.

Signed by Michael J. Rossow
 Surveyor's Michigan License No. 24615

Date May 13, 1994
 PA 345-1990
 PEER COMMITTEE
 APPROVED 6-17-94



APPROVED AS AN OFFICIAL GOVERNMENT CORNER BY ST. CLAIR COUNTY:

Signed By: _____
St. Clair County Land Surveyor

Surveyor's Michigan License No. _____

A	B	C	D	E	F	G	H	I	J	K	L
2	6	5	4	3	2	1					
3											
4	7	8	9	10	11	12					
5											
6	18	17	16	15	14	13					
7											
8	19	20	21	22	23	24					
9											
10	30	29	28	27	26	25					
11											
12	31	32	33	34	35	36					
13											

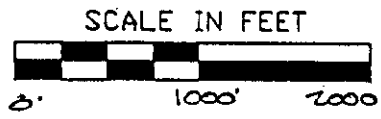
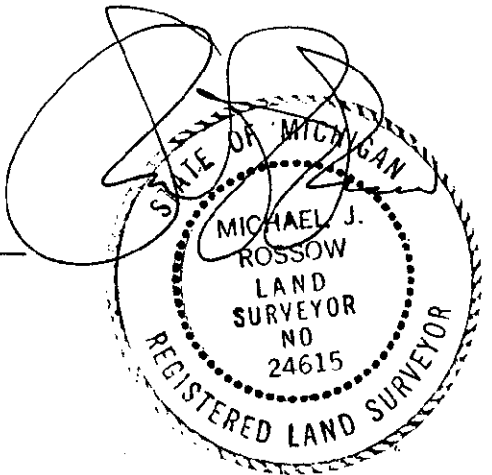
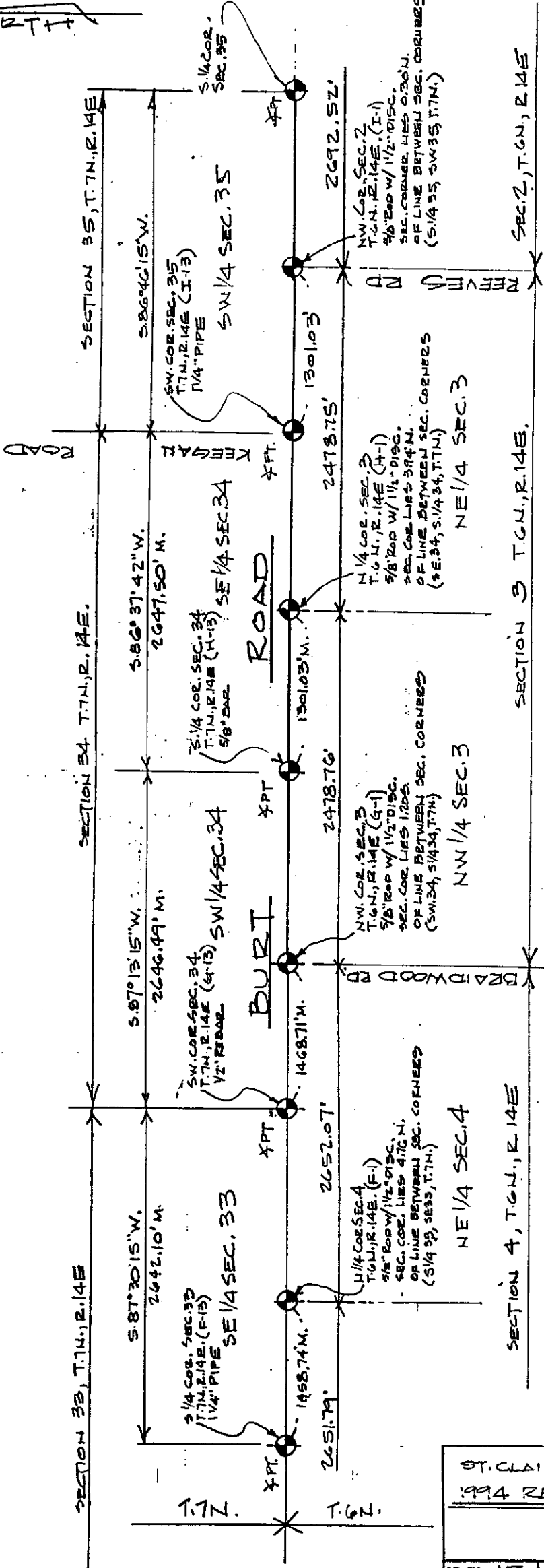
STATE PLAIN COORDINATES

N. _____

E. _____

ELEVATION _____

HORIT



LEGEND

○	SET IRON
●	FOUND IRON
○	RECORDED
○	MEASURED
○	CALCULATED
—x—x—	FENCE
○	GOVT. CORNER

ST. CLAIR COUNTY, MICHIGAN
 1994 RECONUMENTATION PROGRAM

DR BY	ME	CK BY	NZ	SHEET NO	3	OF	SHEETS
SCALE	1" = 1000'	DATE	4-26-94				

T.R. VALENTINE & ASSOCIATES INC.
 Consulting Engineers, Architects & Land Surveyors
 901 Huron Ave., Suite B
 Port Huron Michigan 4806
 (313) 985-4848

NOTE: ALL DISTANCES & ANGLES
 MEASURED ELECTRONICALLY