

RECEIVED  
ST. CLAIR COUNTY

1994 SEP 20 PM 2:20

REGISTER OF DEEDS  
ST. CLAIR COUNTY

# ST. CLAIR COUNTY, MICHIGAN OFFICIAL GOVERNMENT CORNER



LAND CORNER RECORDATION CERTIFICATE  
Filing Requirement of Act 74, Mich. P.A. 1970

Located In: Corner Code #

1. Public Land Survey	T	6N	R	14E	I-1
	T		R		
	T		R		
	T		R		
2. Property Controlling in Section	S		T		R
	S		T		R
3. Miscellaneous Property in Sec.	S		T		R
	S		T		R

*Sec. # 1*

Register of Deeds Stamp & File Number

4. Lot No. \_\_\_\_\_, Recorded Plat \_\_\_\_\_  
5. Private Claims \_\_\_\_\_

Michael J. Rossow February 28, 94

I, \_\_\_\_\_, in a field survey on \_\_\_\_\_, 19\_\_\_\_\_, do hereby certify that under requirements of P.A. 74, Michigan P.A. of 1970, the corner points mentioned in lines 1 and 2 above were in conformance with regulations and rules therefore as required in the current manual of survey instructions of the United States Department of the Interior, Bureau of Land Management or by a decree of a Court of Law and/or that the corner points mentioned in lines 3, 4 and 5 above were in conformance with the rules of the Michigan Board of Land Surveyors or by a Decree of a Court of Law; established, re-established, monumented, re-monumented, recovered, found as expressed below:

NOTE: Not more than 1 corner, may be recorded on this certificate.

A. Description of original monument and accessories and/or subsequent restoration:

"Post" set for original corner (Govt. Survey).  
Page 133-134

St. Clair Co. Surveyors Record Identifies "Pointed Stone" as Corner.

Act 74 Cert. filed L.4,P.59 (MDOT).

STATE PLAIN COORDINATES

N. \_\_\_\_\_

E. \_\_\_\_\_

ELEVATION \_\_\_\_\_

B. Description of corner evidence found and/or method applied in restoring or reestablishing corner:

5/8" Rod with 1 1/2" Brass Disc per. Cert. filed in L.4,P.59.

C. Description of monument for corner and accessories established to perpetuate locating the position of the corner:

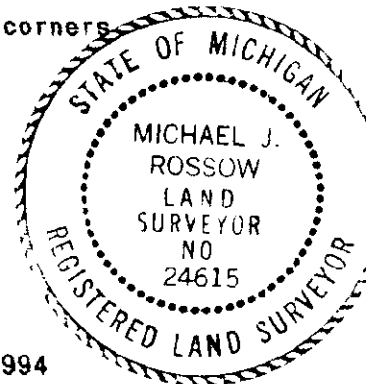
5/8" Rod with 1 1/2" brass disc. (0.30' North of line between section corners S $\frac{1}{4}$  35, SW 35, T.7N., R.14E.)

- 320.71' ESE to set P.K. and County Tag in P. Pole.
- 401.15' SSW to set P.K. and County Tag in P. Pole.
- 99.80' SW to set P.K. and County Tag in P. Pole.
- 56.56' ENE to set P.K. and County Tag in 12" Tree.
- 12.0' North to Axle Shaft (County Road P.I.)

SEE ATTACHED SKETCH FOR ADDITIONAL INFORMATION.

Signed by Michael J. Rossow  
Surveyor's Michigan License No. 24615

Date May 1, 1994



PA 345-1990  
PEER COMMITTEE  
APPROVED 6-17-94

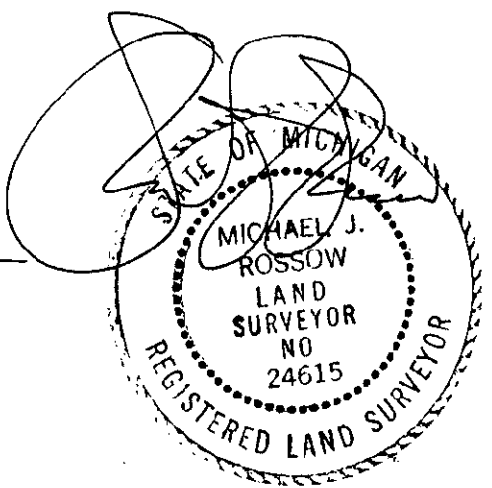
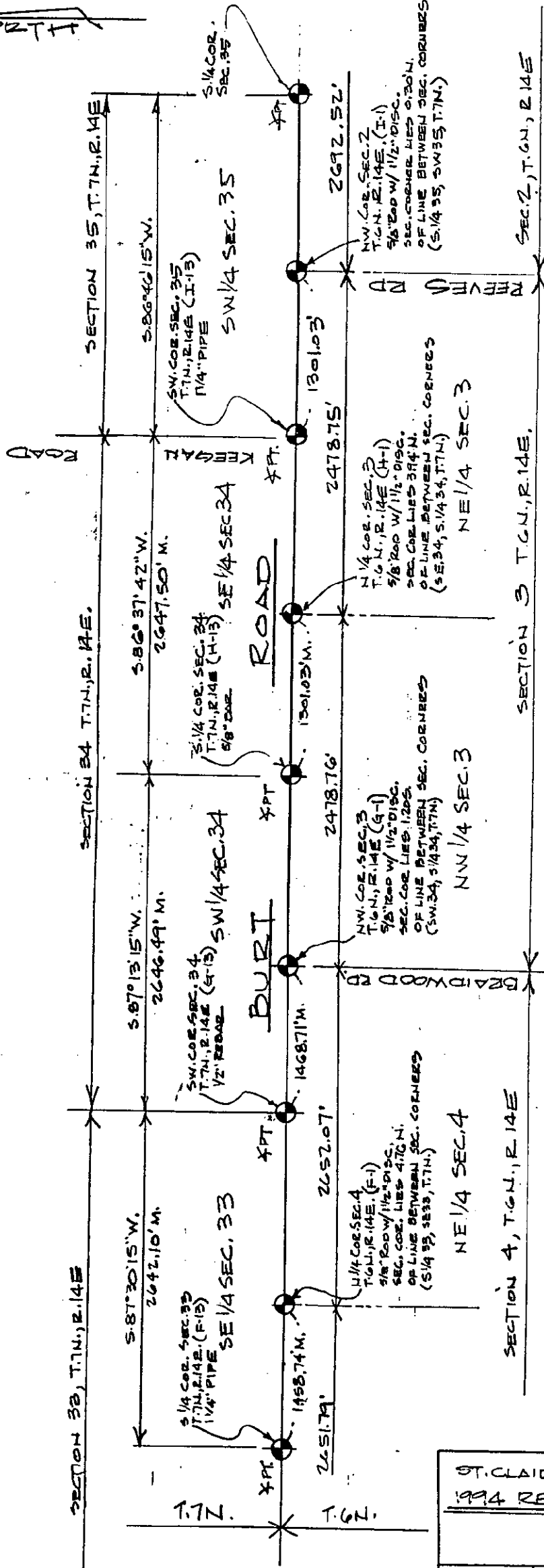
APPROVED AS AN OFFICIAL GOVERNMENT CORNER BY ST. CLAIR COUNTY:

Signed By: \_\_\_\_\_  
St. Clair County Land Surveyor

Surveyor's Michigan License No. \_\_\_\_\_

Date  
LIBER 007 PAGE 285

HORTH



LEGEND

- SET IRON
- FOUND IRON
- RECORDED
- MEASURED
- CALCULATED
- X — FENCE
- X — GOVT. CORNER

NOTE: ALL DISTANCES & ANGLES  
MEASURED ELECTRONICALLY

ST. CLAIR COUNTY, MICHIGAN			
1994 REMONUMENTATION PROGRAM			
DR BY MZ	CK BY MZ	SHEET NO 3	OF SHEETS
SCALES 1" = 1000'		DATE 4-26-94	
T.R. VALENTINE & ASSOCIATES INC. Consulting Engineers, Architects & Land Surveyors		901 Huron Ave., Suite 8 Port Huron Michigan 48060 (313) 985-4848	
DWG NO	JOB NO	BK	