

RECEIVED
REGISTERED DEEDS

1994 SEP 20 PM 2:20

REGISTERED DEEDS
ST. CLAIR COUNTY

ST. CLAIR COUNTY, MICHIGAN OFFICIAL GOVERNMENT CORNER



LAND CORNER RECORDATION CERTIFICATE Filing Requirement of Act 74, Mich. P.A. 1970

Located In: Corner Code #

1. Public Land Survey	T	<u>6N</u>	R	<u>14E</u>	<u>J-1</u>
	T		R		
	T		R		
	T		R		
2. Property Controlling in Section	S		T	R	<u>Sec. # 1</u>
	S		T	R	
3. Miscellaneous Property in Sec.	S		T	R	
	S		T	R	

Register of Deeds Stamp & File Number

4. Lot No. _____, Recorded Plat _____
5. Private Claims _____

Michael J. Rossow

February 21, 94

I, _____, in a field survey on _____, 19____, do hereby certify that under requirements of P.A. 74, Michigan P.A. of 1970, the corner points mentioned in lines 1 and 2 above were in conformance with regulations and rules therefore as required in the current manual of survey instructions of the United States Department of the Interior, Bureau of Land Management or by a decree of a Court of Law and/or that the corner points mentioned in lines 3, 4 and 5 above were in conformance with the rules of the Michigan Board of Land Surveyors or by a Decree of a Court of Law; established, re-established, monumented, re-monumented, recovered, found as expressed below:

NOTE: Not more than 1 corner, may be recorded on this certificate.

A. Description of original monument and accessories and/or subsequent restoration:

Nothing set for original corner (G.L.O.).

St. Clair Co. Surveyors Record identities 1" gas pipe, as corner.
Act 74 Cert. filed L.4,P.62 (MDOT).

B. Description of corner evidence found and/or method applied in restoring or reestablishing corner:

5/8" Rod with 1 1/2" brass disc. per. L.4,P.62 Certificate.

C. Description of monument for corner and accessories established to perpetuate locating the position of the corner:

5/8" Rod with 1/2" brass disc. (0.45' North of line between section corners SE 35, SW 35, T.7N., R.14E.)

39.39' SW to set P.K. and County Tag in Tel. Riser.

55.08' NW to set P.K. and County Tag in 15" Tree.

41.13' NNW to set P.K. and County Tag in 12" Tree.

53.90' NE to set P.K. and County Tag in 8" Tree.

On N edge Asph. Road (Burt)

South 11.33' to Axle Shaft (County Road P.I.)

SEE ATTACHED SKETCH FOR ADDITIONAL INFORMATION.



Signed by Michael J. Rossow
Surveyor's Michigan License No. 24615

Date May 13, 1994
PA 345-1990
PEER COMMITTEE
APPROVED 6-17-94

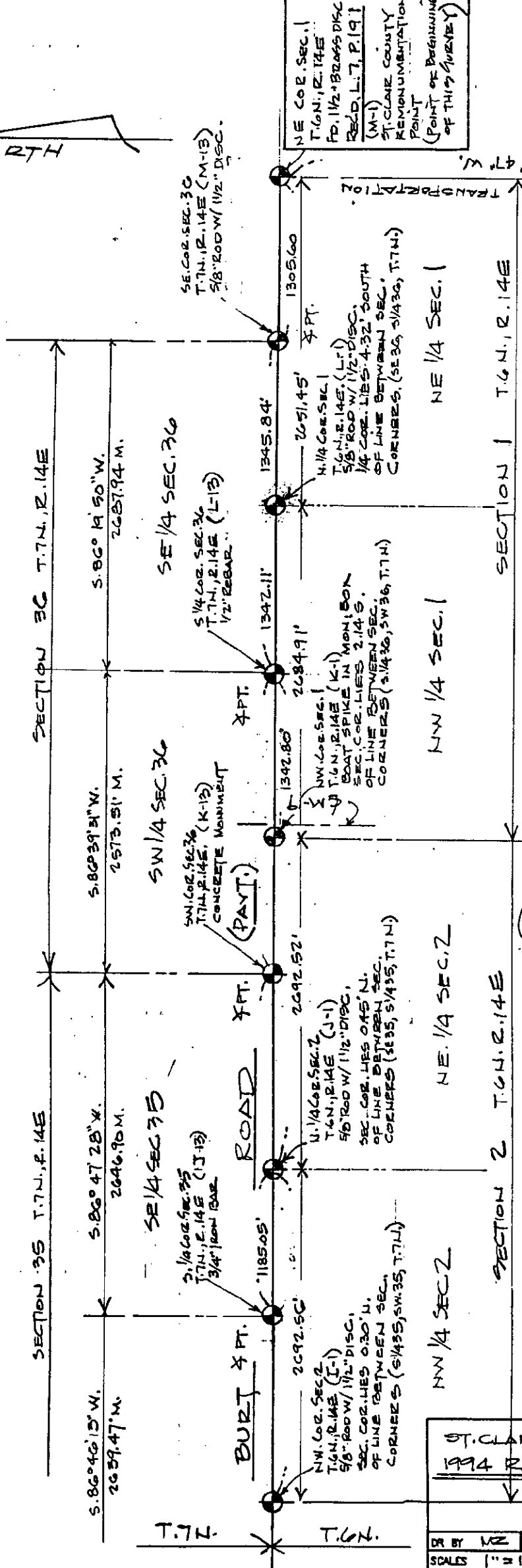
APPROVED AS AN OFFICIAL GOVERNMENT CORNER BY ST. CLAIR COUNTY:

Signed By: _____
St. Clair County Land Surveyor

Surveyor's Michigan License No. _____

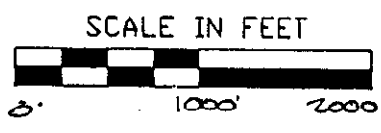
Date
LIBER 007 PAGE 283

NORTH



NE COR. SEC. 1
T.6N., R.14E
FD. 1/2 BRASS DISC.
REC'D. L. 7. P. 191
(M-1)
ST. CLAIR COUNTY
REMONUMENTATION
POINT
(POINT OF BEGINNING
OF THIS SURVEY)

MICH. DEPT. OF TRANSFORMATION
BEARING L. 03° 09' 47" W.



LEGEND

O	SET IRON
●	FOUND IRON
○	RECORDED
M	MEASURED
C	CALCULATED
-x-x-	FENCE
*	GOVT. CORNER

ST. CLAIR COUNTY, MICHIGAN
1994 REMONUMENTATION PROGRAM

DR BY MZ	CK BY MZ	SHEET NO 2	OF SHEETS
SCALES 1" = 1000'		DATE 4-26-94	
T.R. VALENTINE & ASSOCIATES INC. Consulting Engineers, Architects & Land Surveyors		901 Huron Ave., Suite 8 Port Huron Michigan 48060 (313) 985-4848	
JOB NO	JOB NO		

NOTE: ALL DISTANCES & ANGLES
MEASURED ELECTRONICALLY