

RECEIVED
REGISTERED DEEDS

ST. CLAIR COUNTY, MICHIGAN OFFICIAL GOVERNMENT CORNER



1994 SEP 20 PM 2:20

REGISTERED DEEDS
ST. CLAIR COUNTY

LAND CORNER RECORDATION CERTIFICATE Filing Requirement of Act 74, Mich. P.A. 1970

Located In: Corner Code #

| | | | | | |
|------------------------------------|---|----|---|-----|---------|
| 1. Public Land Survey | T | 6N | R | 14E | L-1 |
| | T | | R | | |
| | T | | R | | |
| | T | | R | | |
| 2. Property Controlling in Section | S | | T | R | Seg. #1 |
| | S | | T | R | |
| 3. Miscellaneous Property in Sec. | S | | T | R | |
| | S | | T | R | |

Register of Deeds Stamp & File Number

4. Lot No. _____, Recorded Plat _____
 5. Private Claims _____

Michael J. Rossow March 3, 94

I, _____, in a field survey on _____, 19____, do hereby certify that under requirements of P.A. 74, Michigan P.A. of 1970, the corner points mentioned in lines 1 and 2 above were in conformance with regulations and rules therefore as required in the current manual of survey instructions of the United States Department of the Interior, Bureau of Land Management or by a decree of a Court of Law and/or that the corner points mentioned in lines 3, 4 and 5 above were in conformance with the rules of the Michigan Board of Land Surveyors or by a Decree of a Court of Law; established, re-established, monumented, re-monumented, recovered, found as expressed below:

NOTE: Not more than 1 corner, may be recorded on this certificate.

A. Description of original monument and accessories and/or subsequent restoration:

This corner not set in Government Surveys.
 St. Clair Co. Surveyors, Record Lists nothing.
 Act 74 Cert. filed L.4,P.28 identifies 5/8" Rod.
 with brass disc.

B. Description of corner evidence found and/or method applied in restoring or reestablishing corner:

Found 5/8" Rod with 1 1/2" disc. per Cert. L.4,P.28.

C. Description of monument for corner and accessories established to perpetuate locating the position of the corner:

5/8" Rod with 1 1/2" disc. (4.32' North to Line between section corners SE 36, S $\frac{1}{4}$ 36, T.7N., R.14E.)
 23.40' NW to set P.K. and County Tag in 18" Elm.
 62.50' S to set P.K. and County Tag in 15" Elm.
 21.38' N to set P.K. and County Tag in 12" Elm.
 3.87' E to set P.K. and County Tag in 12" Elm.

SEE ATTACHED SKETCH FOR ADDITIONAL INFORMATION.

Signed by _____
 Michael J. Rossow
 Surveyor's Michigan License No. 24615

Date May 13, 1994
 PA 345-1990
 PEER COMMITTEE
 APPROVED 6-17-94

| | A | B | C | D | E | F | G | H | I | J | K |
|----|----|----|----|----|----|----|---|---|---|---|---|
| 2 | 6 | 5 | 4 | 3 | 2 | 1 | | | | | |
| 3 | | | | | | | | | | | |
| 4 | 7 | 8 | 9 | 10 | 11 | 12 | | | | | |
| 5 | | | | | | | | | | | |
| 6 | 18 | 17 | 16 | 15 | 14 | 13 | | | | | |
| 7 | | | | | | | | | | | |
| 8 | 19 | 20 | 21 | 22 | 23 | 24 | | | | | |
| 9 | | | | | | | | | | | |
| 10 | 30 | 29 | 28 | 27 | 26 | 25 | | | | | |
| 11 | | | | | | | | | | | |
| 12 | 31 | 32 | 33 | 34 | 35 | 36 | | | | | |
| 13 | | | | | | | | | | | |

STATE PLAIN COORDINATES

N. _____

E. _____

ELEVATION _____



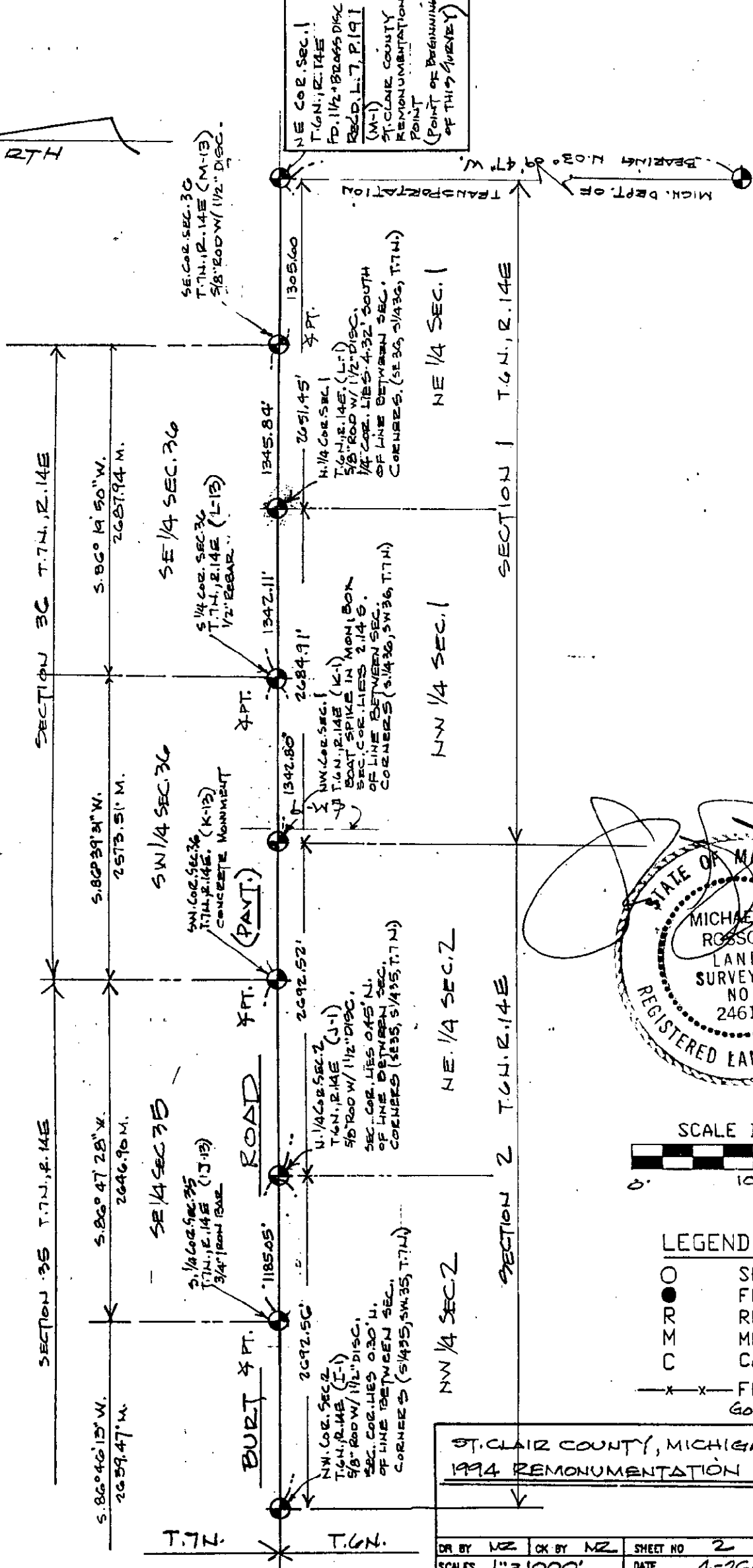
APPROVED AS AN OFFICIAL GOVERNMENT CORNER BY ST. CLAIR COUNTY:

Signed By: _____
 St. Clair County Land Surveyor

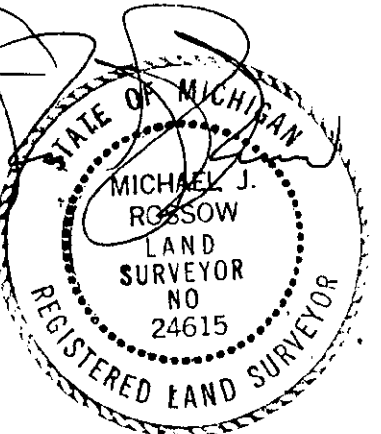
Surveyor's Michigan License No. _____

Date
 LIBER 007 PAGE 279

NORTH



NE COR. SEC. 1
T. 6 N., R. 14 E.
FD. 1 1/2\"/>



LEGEND

| | |
|-------|--------------|
| ○ | SET IRON |
| ● | FOUND IRON |
| ○ | RECORDED |
| ○ | MEASURED |
| ○ | CALCULATED |
| —x—x— | FENCE |
| —x—x— | GOVT. CORNER |

ST. CLAIR COUNTY, MICHIGAN
1994 REMONUMENTATION PROGRAM

| | | | | | | | |
|--------|------------|-------|---------|----------|---|----|---|
| DR BY | NZ | CK BY | NZ | SHEET NO | 2 | OF | 5 |
| SCALES | 1" = 1000' | DATE | 4-26-94 | | | | |

T.R. VALENTINE & ASSOCIATES INC. 901 Huron Ave., Suite 8
Consulting Engineers, Port Huron Michigan 4806
Architects & Land Surveyors (313) 985-4848

NOTE: ALL DISTANCES & ANGLES
MEASURED ELECTRONICALLY