

RECEIVED  
REGISTRATION

1994 SEP 20 PM 2:21

REGISTER OF DEEDS  
ST. CLAIR COUNTY

# ST. CLAIR COUNTY, MICHIGAN OFFICIAL GOVERNMENT CORNER



LAND CORNER RECORDATION CERTIFICATE  
Filing Requirement of Act 74, Mich. P.A. 1970

|                                    | Located In:              | Corner Code # |
|------------------------------------|--------------------------|---------------|
| 1. Public Land Survey              | T <u>7N</u> R <u>13E</u> | <u>D-13</u>   |
|                                    | T _____ R _____          | _____         |
|                                    | T _____ R _____          | _____         |
|                                    | T _____ R _____          | _____         |
| 2. Property Controlling in Section | S _____ T _____ R _____  | <u>Sec. 7</u> |
|                                    | S _____ T _____ R _____  | _____         |
| 3. Miscellaneous Property in Sec.  | S _____ T _____ R _____  | _____         |
|                                    | S _____ T _____ R _____  | _____         |

Register of Deeds Stamp & File Number

4. Lot No. \_\_\_\_\_, Recorded Plat \_\_\_\_\_  
5. Private Claims \_\_\_\_\_

Michael J. Rossow

May 2, 1994

I, \_\_\_\_\_, in a field survey on \_\_\_\_\_, 19\_\_\_\_\_, do hereby certify that under requirements of P.A. 74, Michigan P.A. of 1970, the corner points mentioned in lines 1 and 2 above were in conformance with regulations and rules therefore as required in the current manual of survey instructions of the United States Department of the Interior, Bureau of Land Management or by a decree of a Court of Law and/or that the corner points mentioned in lines 3, 4 and 5 above were in conformance with the rules of the Michigan Board of Land Surveyors or by a Decree of a Court of Law; established, re-established, monumented, re-monumented, recovered, found as expressed below:

**NOTE: Not more than 1 corner, may be recorded on this certificate.**

A. Description of original monument and accessories and/or subsequent restoration:

"Post" set for original corner (Gov't. Survey).

St. Clair County Surveyors Record Lists a 1" Iron pipe.

Act 74 Cert. filed L.2,P.120 lists a "T" Iron as corner.

B. Description of corner evidence found and/or method applied in restoring or reestablishing corner:

Found "T" Iron per Act 74 Cert. L.2,P.120 all local witnesses have been destroyed.

C. Description of monument for corner and accessories established to perpetuate locating the position of the corner:

Damaged "T" Iron.

Replaced with 1/2" Rebar and Cap #24615

117.07' SE to set P.K. and County Tag in GTE Pole.  
155.54' E to set P.K. and County Tag in Guard Rail Post.  
34.94' N to set P.K. and County Tag in FE Post.  
149.36' WNW to set P.K. and County Tag in 8" Elm.

SEE ATTACHED SKETCH FOR ADDITIONAL INFORMATION.

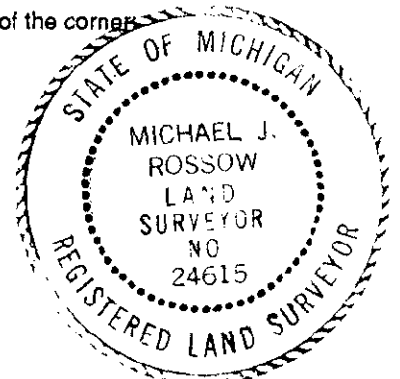
Signed by Michael J. Rossow

PA 345-1990 Date May 13, 1994

Surveyor's Michigan License No. 24615

PEER COMMITTEE

APPROVED 6-3-94



APPROVED AS AN OFFICIAL GOVERNMENT CORNER BY ST. CLAIR COUNTY:

Signed By: \_\_\_\_\_  
St. Clair County Land Surveyor

Surveyor's Michigan License No. \_\_\_\_\_

LIBER 007 PAGE 321

|    | A  | B  | C  | D  | E  | F  | G | H | I | J | K | L | M |
|----|----|----|----|----|----|----|---|---|---|---|---|---|---|
| 2  | 6  | 5  | 4  | 3  | 2  | 1  |   |   |   |   |   |   |   |
| 3  |    |    |    |    |    |    |   |   |   |   |   |   |   |
| 4  | 7  | 8  | 9  | 10 | 11 | 12 |   |   |   |   |   |   |   |
| 5  |    |    |    |    |    |    |   |   |   |   |   |   |   |
| 6  | 18 | 17 | 16 | 15 | 14 | 13 |   |   |   |   |   |   |   |
| 7  |    |    |    |    |    |    |   |   |   |   |   |   |   |
| 8  | 19 | 20 | 21 | 22 | 23 | 24 |   |   |   |   |   |   |   |
| 9  |    |    |    |    |    |    |   |   |   |   |   |   |   |
| 10 | 30 | 29 | 28 | 27 | 26 | 25 |   |   |   |   |   |   |   |
| 11 |    |    |    |    |    |    |   |   |   |   |   |   |   |
| 12 | 31 | 32 | 33 | 34 | 35 | 36 |   |   |   |   |   |   |   |
| 13 |    |    |    |    |    |    |   |   |   |   |   |   |   |

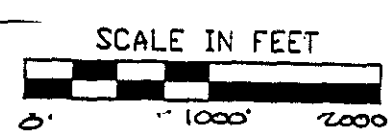
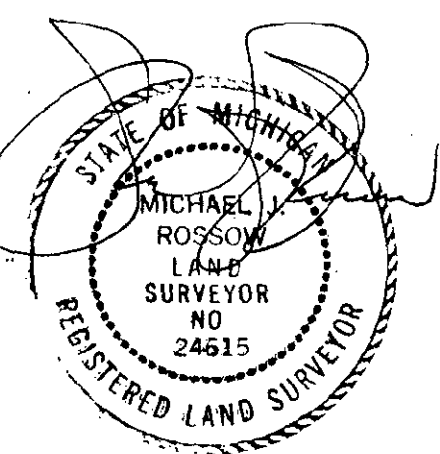
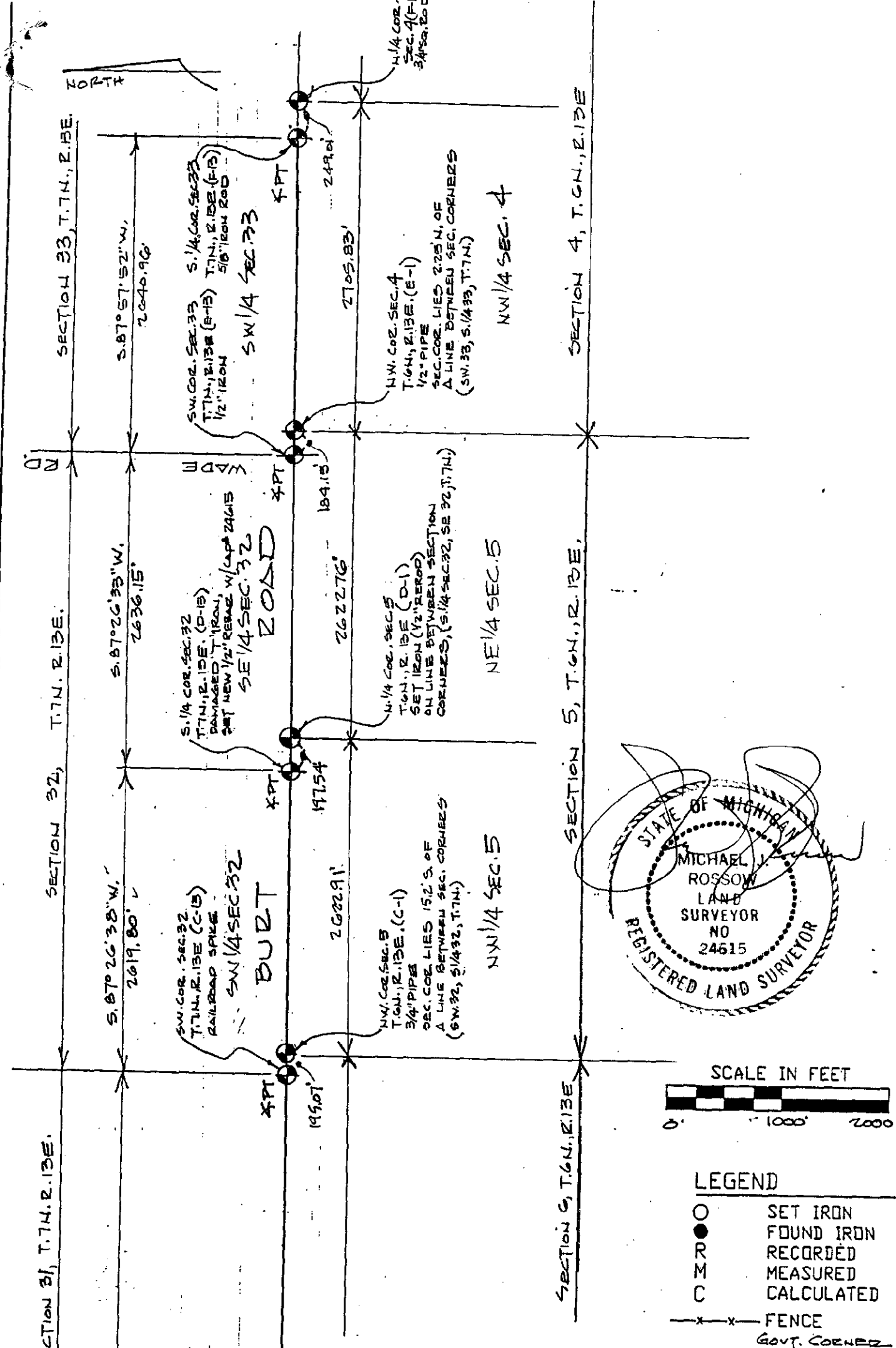
STATE PLAIN COORDINATES

N. \_\_\_\_\_

E. \_\_\_\_\_

ELEVATION \_\_\_\_\_

NORTH



LEGEND

- SET IRON
- FOUND IRON
- R RECORDED
- M MEASURED
- C CALCULATED
- x-x- FENCE
- Govt. CORNER

NOTE: ALL DISTANCES & ANGLES MEASURED ELECTRONICALLY

ST. CLAIR COUNTY, MICHIGAN  
 1994 REMONUMENTATION PROGRAM

|  |          |  |    |        |
|--|----------|--|----|--------|
| DR BY MZ   | CK BY MZ | SHEET NO 7   | OF | SHEETS |
| SCALES 1" = 1000'  |          | DATE 4-26-94   |    |        |
| T.R. VALENTINE & ASSOCIATES INC. Consulting Engineers, Architects & Land Surveyors |          | 901 Huron Ave., Suite 8<br>Port Huron Michigan 48060<br>(313) 985-4848 |    |        |