

RECEIVED
 1994 SEP 20 PM 2:21

ST. CLAIR COUNTY, MICHIGAN
 OFFICIAL GOVERNMENT CORNER



REGISTER OF DEEDS LAND CORNER RECORDATION CERTIFICATE
 ST. CLAIR COUNTY Filing Requirement of Act 74, Mich. P.A. 1970

	Located In:	Corner Code ##
1. Public Land Survey	T <u>7N</u> R <u>13E</u>	<u>G-13</u>
	T _____ R _____	_____
	T _____ R _____	_____
	T _____ R _____	_____
2. Property Controlling in Section	S _____ T _____ R _____	<u>Seg 1</u>
	S _____ T _____ R _____	_____
3. Miscellaneous Property in Sec.	S _____ T _____ R _____	_____
	S _____ T _____ R _____	_____

Register of Deeds Stamp & File Number

4. Lot No. _____, Recorded Plat _____
 5. Private Claims _____

Michael J. Rossow May 12, 94

I, _____, in a field survey on _____, 19 _____, do hereby certify that under requirements of P.A. 74, Michigan P.A. of 1970, the corner points mentioned in lines 1 and 2 above were in conformance with regulations and rules therefore as required in the current manual of survey instructions of the United States Department of the Interior, Bureau of Land Management or by a decree of a Court of Law and/or that the corner points mentioned in lines 3, 4 and 5 above were in conformance with the rules of the Michigan Board of Land Surveyors or by a Decree of a Court of Law; established, re-established, monumented, re-monumented, recovered, found as expressed below:

NOTE: Not more than 1 corner, may be recorded on this certificate.

A. Description of original monument and accessories and/or subsequent restoration:
 "Post" set for original Government corner (Gov't. Survey)

St. Clair Co. Surveyors Record identifies a "Conc. Mon.", on 5-13-36.

Act 74 Cert. filed in L.2,P.431 identifies a 1 1/2" Iron Rod (All Witnesses Destroyed). Subsequent Cert. filed by MDOT. L.3,P.266 identifies a 1 1/2" Rod in Monument Box.

B. Description of corner evidence found and/or method applied in restoring or reestablishing corner:

Found 5/8" Rebar in Monument Box and centerline of Capac Road and Burt Road. (This intersection was reconstructed during I-69 Construction.) Corner verified using MDOT Right of way information.

C. Description of monument for corner and accessories established to perpetuate locating the position of the corner:

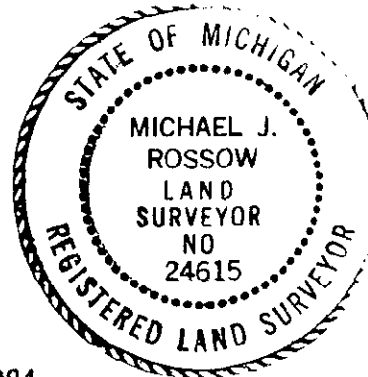
5/8" Rebar in Monument Box.

- 99.73' SE to set P.K. and County Tag in P. Pole.
- 91.75' NE to set P.K. and County Tag in Sign Post (E.leg)
- 185.22' SW to set P.K. and County Tag in 10" Maple.
- 181.6' WSW to set P.K. and County Tag in P. Pole.
- 90.75' NW State Highway Right of Way Monument.

SEE ATTACHED SKETCH FOR ADDITIONAL INFORMATION.

Signed by Michael J. Rossow
 Surveyor's Michigan License No. 24615

Date May 13, 1994
 PA 345-1990
 PEER COMMITTEE
 APPROVED 6-3-94



APPROVED AS AN OFFICIAL GOVERNMENT CORNER BY ST. CLAIR COUNTY:

Signed By: _____
 St. Clair County Land Surveyor

Surveyor's Michigan License No. _____

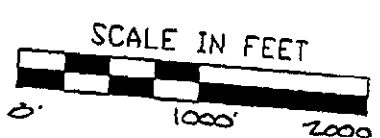
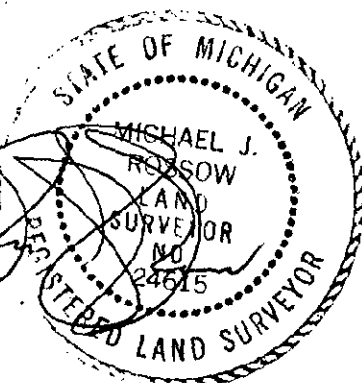
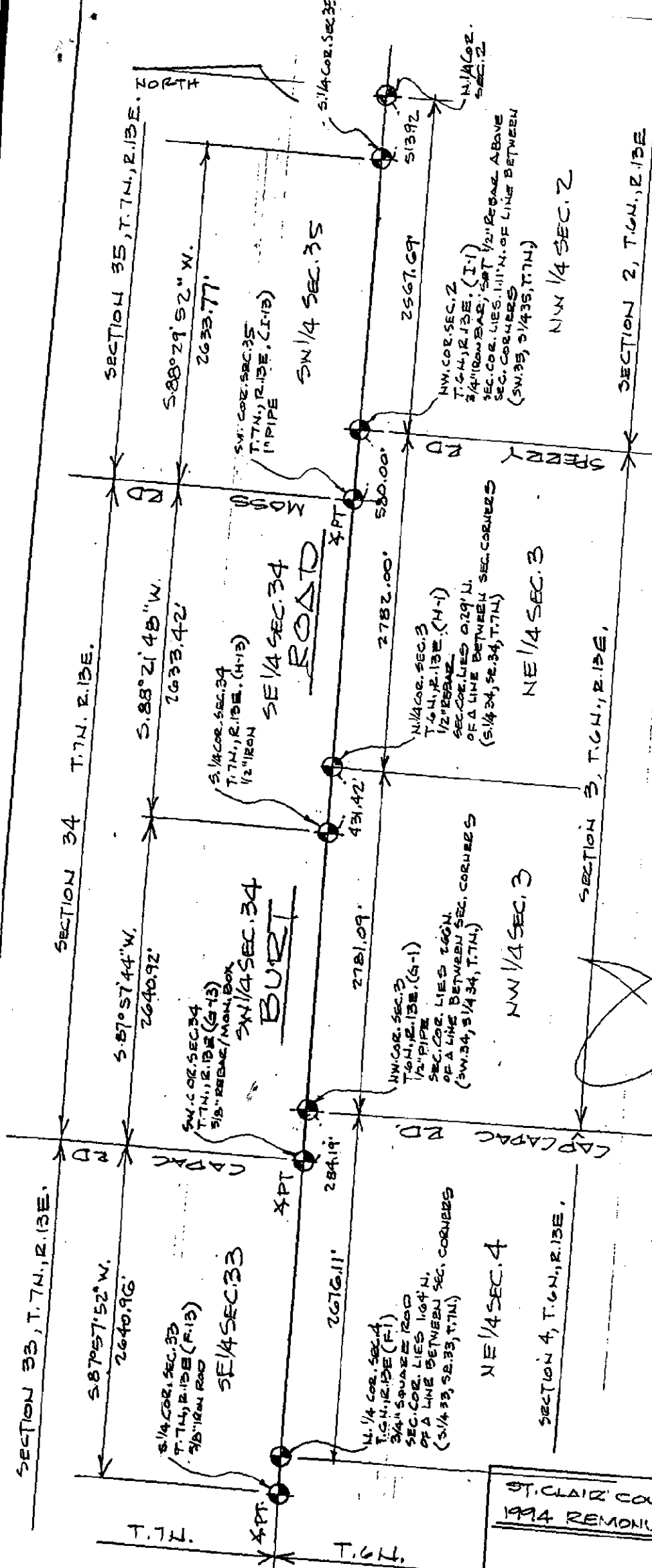
	A	B	C	D	E	F	G	H	I	J	K	L	M
2	6	5	4	3	2	1							
3													
4	7	8	9	10	11	12							
5													
6	18	17	16	15	14	13							
7													
8	19	20	21	22	23	24							
9													
10	30	29	28	27	26	25							
11													
12	31	32	33	34	35	36							
13													

STATE PLAIN COORDINATES

N. _____

E. _____

ELEVATION _____



LEGEND

○	SET IRON
●	FOUND IRON
○	RECORDED
○	MEASURED
○	CALCULATED
—x—x—	FENCE
○	GOVT. CORNER

ST. CLAIR COUNTY, MICHIGAN
 1994 REMONUMENTATION PROGRAM

NOTE: ALL DISTANCES & ANGLES
 MEASURED ELECTRONICALLY

DR BY MZ	CK BY MZ	SHEET NO 6	OF
SCALES 1" = 1000'	DATE 4-26-94	SHEETS	
T.R. VALENTINE & ASSOCIATES INC. Consulting Engineers, Architects & Land Surveyors		901 Huron Ave., Suite 8 Port Huron Michigan 48060 (313) 985-4848	
DRW NO	JOB NO	BY	

LIRFR 1007 DATE 316