

RECEIVED
REGISTER

1994 SEP 20 PM 2:21

REGISTER OF DEEDS
ST. CLAIR COUNTY

ST. CLAIR COUNTY, MICHIGAN OFFICIAL GOVERNMENT CORNER



LAND CORNER RECORDATION CERTIFICATE
Filing Requirement of Act 74, Mich. P.A. 1970

| | | |
|------------------------------------|--------------------------|----------------|
| | Located In: | Corner Code #/ |
| 1. Public Land Survey | T <u>7N</u> R <u>13E</u> | <u>J-13</u> |
| | T _____ R _____ | _____ |
| | T _____ R _____ | _____ |
| | T _____ R _____ | _____ |
| 2. Property Controlling in Section | S _____ T _____ R _____ | <u>Seg. 1</u> |
| | S _____ T _____ R _____ | _____ |
| 3. Miscellaneous Property in Sec. | S _____ T _____ R _____ | _____ |
| | S _____ T _____ R _____ | _____ |

Register of Deeds Stamp & File Number

4. Lot No. _____, Recorded Plat _____
5. Private Claims _____

Michael J. Rossow

May 3,

94

I, _____, in a field survey on _____, 19____, do hereby certify that under requirements of P.A. 74, Michigan P.A. of 1970, the corner points mentioned in lines 1 and 2 above were in conformance with regulations and rules therefore as required in the current manual of survey instructions of the United States Department of the Interior, Bureau of Land Management or by a decree of a Court of Law and/or that the corner points mentioned in lines 3, 4 and 5 above were in conformance with the rules of the Michigan Board of Land Surveyors or by a Decree of a Court of Law; established, re-established, monumented, re-monumented, recovered, found as expressed below:

NOTE: Not more than 1 corner, may be recorded on this certificate.

A. Description of original monument and accessories and/or subsequent restoration:
"Post" set for original corner (Gov't. Survey).

St. Clair Co. Surveyors Record indicates a corner existed in the 1930's with witnesses, but does not identify corner.

Act 74 Cert. filed L.4,P.29 (MDOT) & identifies a 5/8" Rod with a 1 1/2" brass disk.

B. Description of corner evidence found and/or method applied in restoring or reestablishing corner:
Found 5/8" Rod with 1 1/2" brass disk per Cert. filed L.4,P.29.

C. Description of monument for corner and accessories established to perpetuate locating the position of the corner:
5/8" Rod with 1 1/2" brass disk.

- 148.84' N to set P.K. and County Tag in P. Pole 1964.
- 415.57' NW to set P.K. and County Tag in P. Pole.
- 558.73' ESE to set P.K. and County Tag in 8" Poplar.
- 425.31' NE to set P.K. and County Tag in P. Pole.

SEE ATTACHED SKETCH FOR ADDITIONAL INFORMATION.

Signed by Michael J. Rossow
Surveyor's Michigan License No. 24615

Date May 13, 1994
PA 345-1990
PEER COMMITTEE
APPROVED 6-10-94

| A | B | C | D | E | F | G | H | I | J | K | L | M |
|----|----|----|----|----|----|----|---|---|---|---|---|---|
| 2 | 6 | 5 | 4 | 3 | 2 | 1 | | | | | | |
| 3 | | | | | | | | | | | | |
| 4 | 7 | 8 | 9 | 10 | 11 | 12 | | | | | | |
| 5 | | | | | | | | | | | | |
| 6 | 18 | 17 | 16 | 15 | 14 | 13 | | | | | | |
| 7 | | | | | | | | | | | | |
| 8 | 19 | 20 | 21 | 22 | 23 | 24 | | | | | | |
| 9 | | | | | | | | | | | | |
| 10 | 30 | 29 | 28 | 27 | 26 | 25 | | | | | | |
| 11 | | | | | | | | | | | | |
| 12 | 31 | 32 | 33 | 34 | 35 | 36 | | | | | | |
| 13 | | | | | | | | | | | | |

STATE PLAIN COORDINATES

N. _____

E. _____

ELEVATION _____

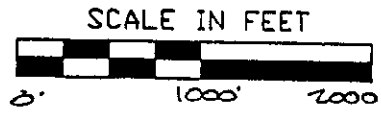
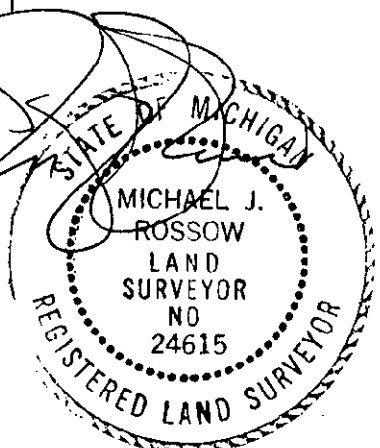
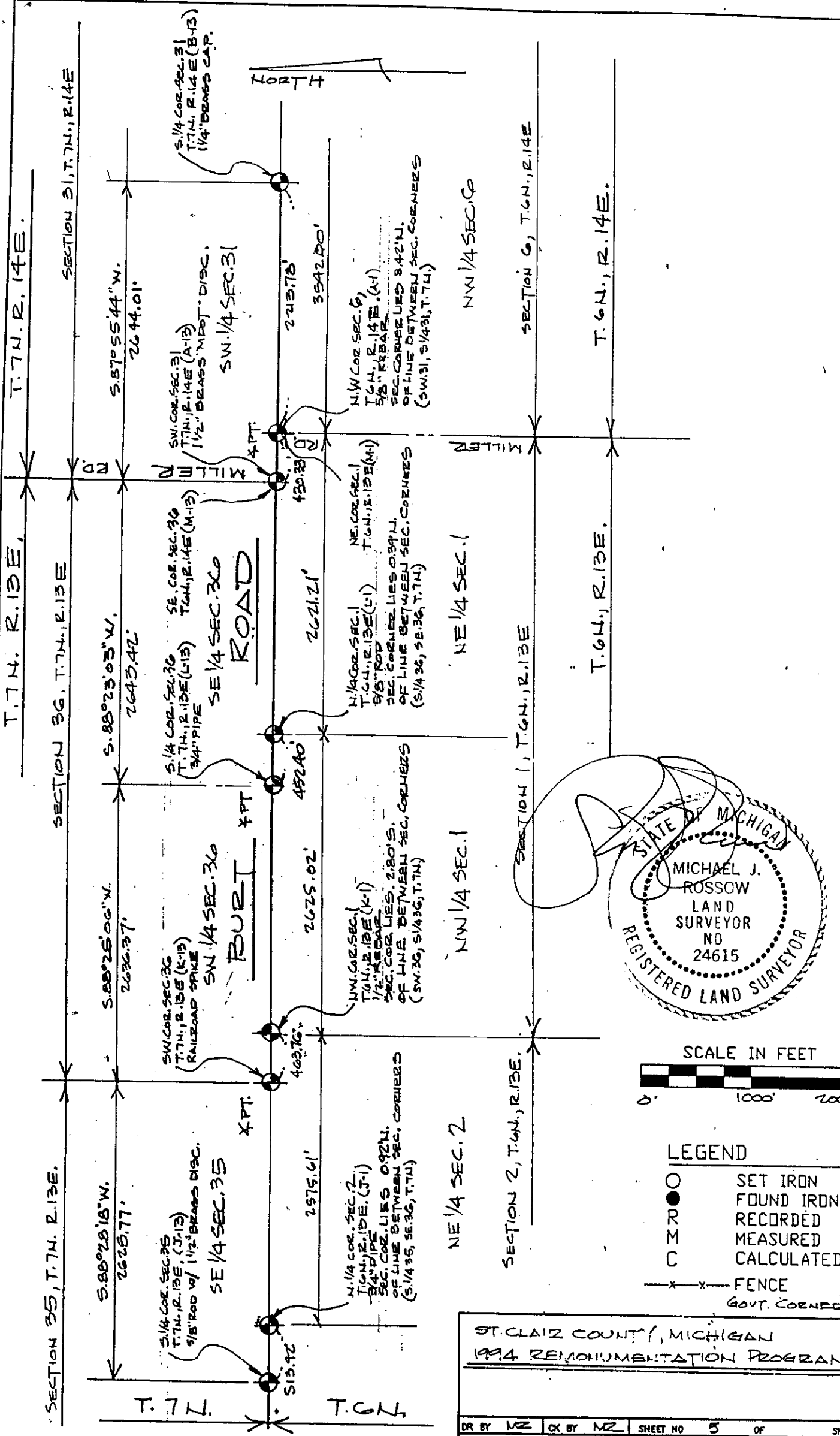


APPROVED AS AN OFFICIAL GOVERNMENT CORNER BY ST. CLAIR COUNTY:

Signed By: _____
St. Clair County Land Surveyor

Surveyor's Michigan License No. _____

Date _____
LIBER 007 PAGE 309



LEGEND

| | |
|-------|--------------|
| ○ | SET IRON |
| ● | FOUND IRON |
| ○ | RECORDED |
| ○ | MEASURED |
| ○ | CALCULATED |
| —x—x— | FENCE |
| ○ | GOVT. CORNER |

ST. CLAIR COUNTY, MICHIGAN
1994 RE-MONUMENTATION PROGRAM

| | | | |
|---|----------|--------------|--------------|
| DR BY MZ | CK BY MZ | SHEET NO. 5 | OF 5 SHEETS |
| SCALE 1" = 1000' | | DATE 4-26-94 | |
| T.R. VALENTINE & ASSOCIATES INC. 901 Huron Ave., Suite 8 Consulting Engineers, Architects & Land Surveyors (313) 985-4848 Port Huron Michigan 48060 | | | |
| JOB NO | JOB NO | 11RFR | 107 DUNC 310 |

NOTE: ALL DISTANCES & ANGLES MEASURED ELECTRONICALLY