

RECEIVED
ST. CLAIR COUNTY

1994 SEP 20 PM 2:21

REGISTER OF DEEDS
ST. CLAIR COUNTY

ST. CLAIR COUNTY, MICHIGAN OFFICIAL GOVERNMENT CORNER



LAND CORNER RECORDATION CERTIFICATE
Filing Requirement of Act 74, Mich. P.A. 1970

Located In: Corner Code #

1. Public Land Survey	T	<u>7N</u>	R	<u>13E</u>	<u>K-13</u>
	T	_____	R	_____	_____
	T	_____	R	_____	_____
	T	_____	R	_____	_____
2. Property Controlling in Section	S	_____	T	_____	<u>Sec. 1</u>
	S	_____	T	_____	_____
3. Miscellaneous Property in Sec.	S	_____	T	_____	_____
	S	_____	T	_____	_____

Register of Deeds Stamp & File Number

4. Lot No. _____, Recorded Plat _____

5. Private Claims _____

Michael J. Rossow February 5, 94

I, _____, in a field survey on _____, 19_____, do hereby certify that under requirements of P.A. 74, Michigan P.A. of 1970, the corner points mentioned in lines 1 and 2 above were in conformance with regulations and rules therefore as required in the current manual of survey instructions of the United States Department of the Interior, Bureau of Land Management or by a decree of a Court of Law and/or that the corner points mentioned in lines 3, 4 and 5 above were in conformance with the rules of the Michigan Board of Land Surveyors or by a Decree of a Court of Law; established, re-established, monumented, re-monumented, recovered, found as expressed below:

NOTE: Not more than 1 corner, may be recorded on this certificate.

A. Description of original monument and accessories and/or subsequent restoration:

"Post" set for original corner (Government Survey)

St. Clair Co. Surveyors Record indicates a corner existed in the 1930's with witnesses, but does not identify corner.

Act 74 Cert. Recorded in L.4,P.30 (MDOT) 5/8" Rod with 1 1/2" brass disk.

B. Description of corner evidence found and/or method applied in restoring or reestablishing corner:

Found Railroad Spike per Act 74 Cert. filed in L.4,P.30.

C. Description of monument for corner and accessories established to perpetuate locating the position of the corner:

Railroad Spike.

34.72' S to set P.K. and County Tag in 30" Ash above form nail.
95.75' WNW to set P.K. and County Tag in Underground Tele Riser Post.
65.77' NNE to set P.K. and County Tag in P. Pole.
37.92' SE to set P.K. and County Tag in P. Pole.

SEE ATTACHED SKETCH FOR ADDITIONAL INFORMATION.

Signed by Michael J. Rossow
Surveyor's Michigan License No. 24615

Date May 13, 1994

PA 345-1990
PEER COMMITTEE

APPROVED 6-10-94

	A	B	C	D	E	F	G	H	I	J	K	L	M
2	6	5	4	3	2	1							
3													
4	7	8	9	10	11	12							
5													
6	18	17	16	15	14	13							
7													
8	19	20	21	22	23	24							
9													
10	30	29	28	27	26	25							
11													
12	31	32	33	34	35	36							
13													

STATE PLAIN COORDINATES

N. _____

E. _____

ELEVATION _____



APPROVED AS AN OFFICIAL GOVERNMENT CORNER BY ST. CLAIR COUNTY:

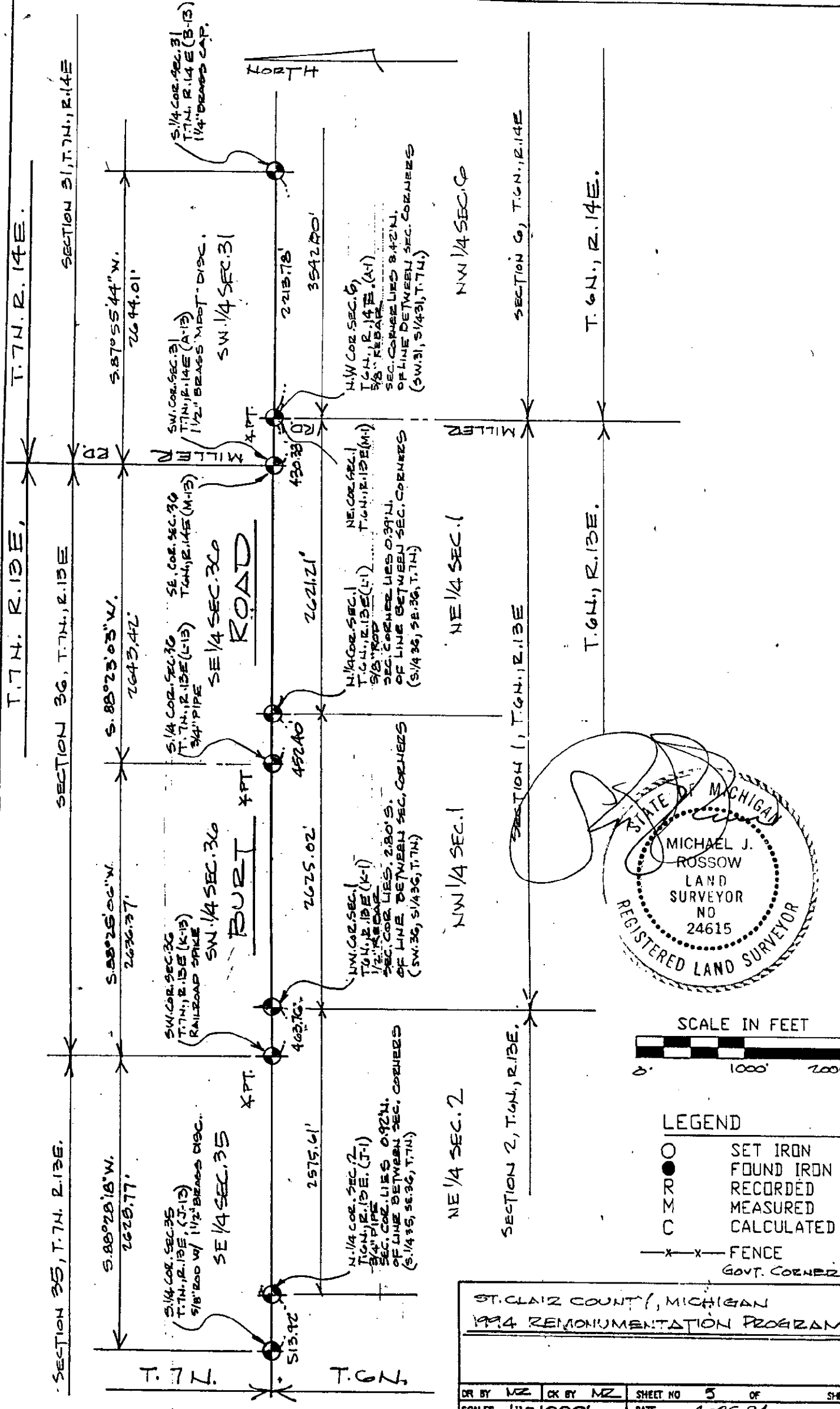
Signed By: _____

St. Clair County Land Surveyor

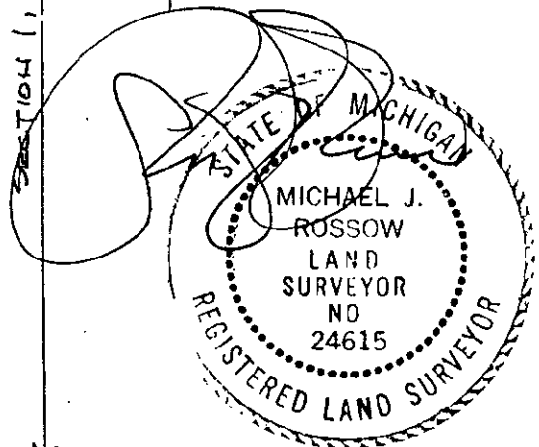
Date

Surveyor's Michigan License No. _____

LIBER 007 PAGE 307



NOTE: ALL DISTANCES & ANGLES
MEASURED ELECTRONICALLY



LEGEND

○	SET IRON
●	FOUND IRON
○	RECORDED
○	MEASURED
○	CALCULATED
—x—x—	FENCE
○	GOVT. CORNER

ST. CLAIR COUNTY, MICHIGAN
1994 RE-MONUMENTATION PROGRAM

DR BY	MZ	CK BY	MZ	SHEET NO	3	OF	SHEETS
SCALES	1" = 1000'	DATE	4-26-94				

T.R. VALENTINE & ASSOCIATES INC. 901 Huron Ave., Suite 8
 Consulting Engineers, Port Huron Michigan 48060
 Architects & Land Surveyors (313) 985-4848