

RECEIVED
ST. CLAIR COUNTY

1991 SEP 20 PM 2:22

REGISTER OF DEEDS
ST. CLAIR COUNTY

ST. CLAIR COUNTY, MICHIGAN OFFICIAL GOVERNMENT CORNER

LAND CORNER RECORDATION CERTIFICATE
Filing Requirement of Act 74, Mich. P.A. 1970



Located In: Corner Code #

1. Public Land Survey	T	7N	R	14E	A-13
	T		R		
	T		R		
	T		R		
2. Property Controlling in Section	S		T		R
	S		T		R
3. Miscellaneous Property in Sec.	S		T		R
	S		T		R

Seg. 1

Register of Deeds Stamp & File Number

4. Lot No. _____, Recorded Plat _____
5. Private Claims _____

Michael J. Rossow May 2, 94

I, _____, in a field survey on _____, 19____, do hereby certify that under requirements of P.A. 74, Michigan P.A. of 1970, the corner points mentioned in lines 1 and 2 above were in conformance with regulations and rules therefore as required in the current manual of survey instructions of the United States Department of the Interior, Bureau of Land Management or by a decree of a Court of Law and/or that the corner points mentioned in lines 3, 4 and 5 above were in conformance with the rules of the Michigan Board of Land Surveyors or by a Decree of a Court of Law; established, re-established, monumented, re-monumented, recovered, found as expressed below:

	A	B	C	D	E	F	G	H	I	J	K	L	M
2	6	5	4	3	2	1							
3													
4	7	8	9	10	11	12							
5													
6	18	17	16	15	14	13							
7													
8	19	20	21	22	23	24							
9													
10	30	29	28	27	26	25							
11													
12	31	32	33	34	35	36							
13													

NOTE: Not more than 1 corner, may be recorded on this certificate.

A. Description of original monument and accessories and/or subsequent restoration:

"Post" set for original corner (Govt. Survey).

St. Clair Co. Surveyors record. lists "Rod" (11-72) as corner.

Act 74 Cert. filed L.6,P.302 Identifies 1 1/4" brass cap on pipe as corner.

STATE PLAIN COORDINATES

N. _____

E. _____

ELEVATION _____

B. Description of corner evidence found and/or method applied in restoring or reestablishing corner:

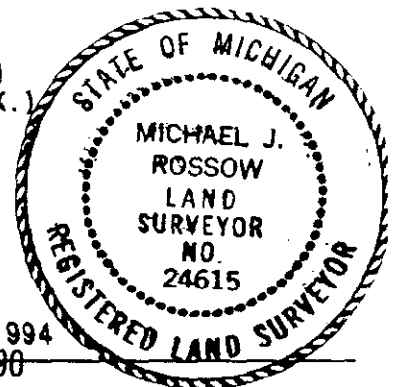
Found 1 1/2" brass disc of 5/8" Rod per Act 74 Cert. filed L.6,P.302 which agrees with Act 132 Cert. filed L.12,P.37.

NOTE: This corner common to two Townships & Certificates are being filed for each Township.

C. Description of monument for corner and accessories established to perpetuate locating the position of the corner:

1 1/2" brass disc on 5/8" Rod.

- 73.81' WNW to set P.K. and County Tag in 15" Elm
- 75.07' NW to set P.K. and County Tag in P.Pole (set above MDOT Tag)
- 83.52' NE to set P.K. and County Tag in P.Pole (set above prev. P.K.)
- 272.31' ESE to set P.K. and County Tag in P.Pole
- 17.05' E County Road PI to North



SEE ATTACHED SKETCH FOR ADDITIONAL INFORMATION.

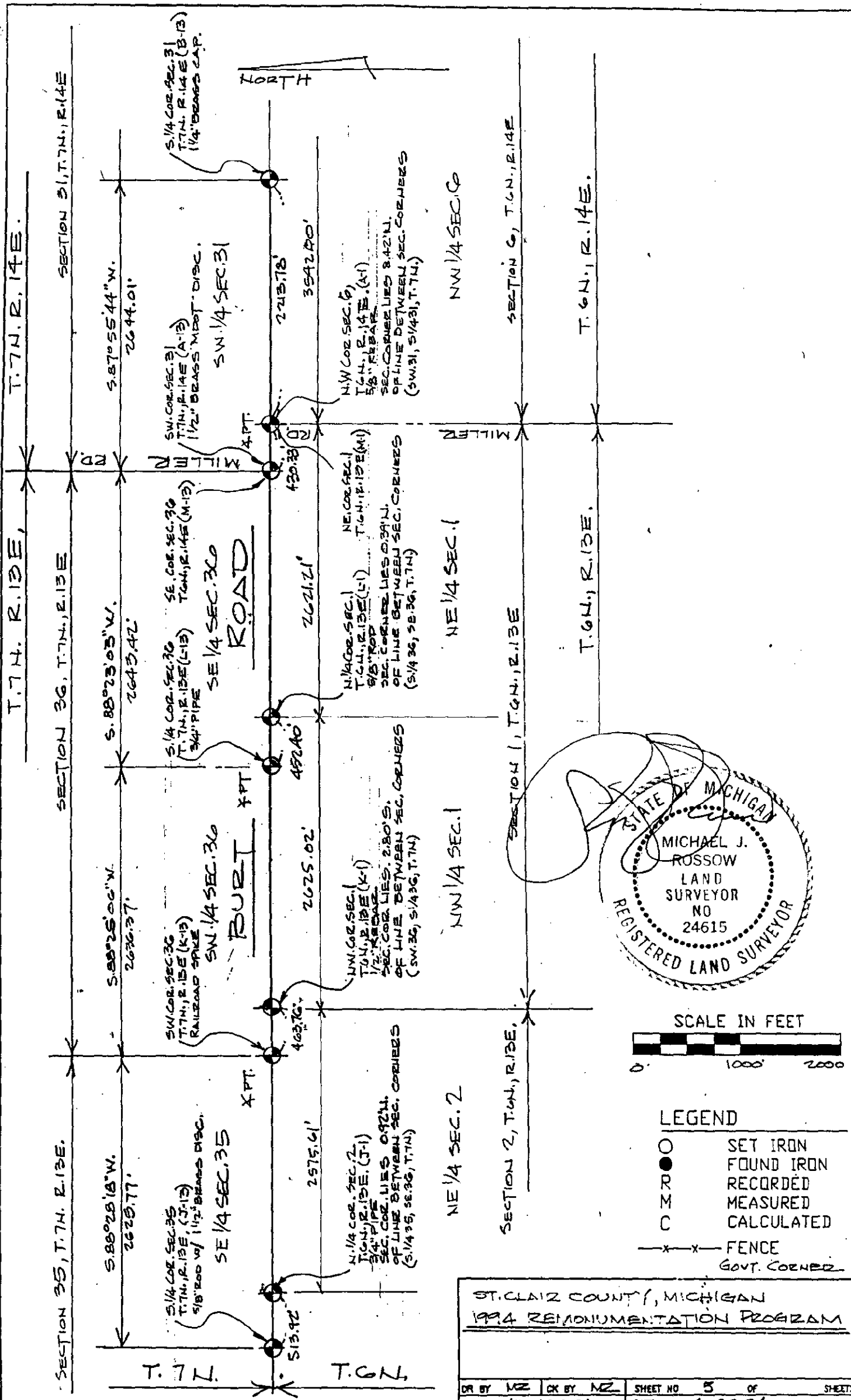
Signed by Michael J. Rossow
Surveyor's Michigan License No. 24615

Date May 13, 1994
PA 345-1990
PEER COMMITTEE
APPROVED 5-20-94

APPROVED AS AN OFFICIAL GOVERNMENT CORNER BY ST. CLAIR COUNTY:

Signed By: _____ Date _____
St. Clair County Land Surveyor

Surveyor's Michigan License No. _____



NOTE: ALL DISTANCES & ANGLES
MEASURED ELECTRONICALLY

ST. CLAIR COUNTY, MICHIGAN			
1994 REAMONUMENTATION PROGRAM			
DR BY	MZ	CR BY	MZ
SHEET NO	5	OF	SHEETS
SCALES	1" = 1000'	DATE	4-26-94
T.R. VALENTINE & ASSOCIATES INC.		901 Huron Ave., Suite B Port Huron Michigan 48060	
Consulting Engineers, Architects & Land Surveyors		(313) 925-4848	
DATE		350	