

RECEIVED
ST. CLAIR COUNTY

1994 SEP 20 PM 2:22

RECORDED
ST. CLAIR COUNTY

ST. CLAIR COUNTY, MICHIGAN OFFICIAL GOVERNMENT CORNER



LAND CORNER RECORDATION CERTIFICATE Filing Requirement of Act 74, Mich. P.A. 1970

	Located In:	Corner Code #
1. Public Land Survey	T <u>7N</u> R <u>14E</u>	<u>D-13</u>
	T _____ R _____	_____
	T _____ R _____	_____
	T _____ R _____	_____
2. Property Controlling in Section	S _____ T _____ R _____	<u>Sec. 1</u>
	S _____ T _____ R _____	_____
3. Miscellaneous Property in Sec.	S _____ T _____ R _____	_____
	S _____ T _____ R _____	_____

Register of Deeds Stamp & File Number

4. Lot No. _____, Recorded Plat _____
 5. Private Claims _____

Michael J. Rossow April 29, 1994

I, _____, in a field survey on _____, 19____, do hereby certify that under requirements of P.A. 74, Michigan P.A. of 1970, the corner points mentioned in lines 1 and 2 above were in conformance with regulations and rules therefore as required in the current manual of survey instructions of the United States Department of the Interior, Bureau of Land Management or by a decree of a Court of Law and/or that the corner points mentioned in lines 3, 4 and 5 above were in conformance with the rules of the Michigan Board of Land Surveyors or by a Decree of a Court of Law; established, re-established, monumented, re-monumented, recovered, found as expressed below:

A	B	C	D	E	F	G	H	I	J	K	L	M
2	6	5	4	3	2							
3												
4	7	8	9	10	11	12						
5												
6	18	17	16	15	14	13						
7												
8	19	20	21	22	23	24						
9												
10	30	29	28	27	26	25						
11												
12	31	32	33	34	35	36						
13												

NOTE: Not more than 1 corner, may be recorded on this certificate.

A. Description of original monument and accessories and/or subsequent restoration:

"Post" set for original corner (Govt. Survey)
 St. Clair Co. Surveyors Record Lists, "Large Stone 26" Long"
 Act 74 Cert. filed L.4,P.167 Identifies corners.
 L.4,P.273 Rescinds L.4,P.167.

STATE PLAIN COORDINATES

N. _____

E. _____

ELEVATION _____

B. Description of corner evidence found and/or method applied in restoring or reestablishing corner:

Found 1/2" Rebar (6" deep) Per St. Clair Co. Road Comm. Information

C. Description of monument for corner and accessories established to perpetuate locating the position of the corner:

1/2" Rebar.
 123.33' SE to set P.K. and County Tag in P.Pole
 194.96' SW to set P.K. and County Tag in P.Pole
 59.47' NNW to set P.K. and County Tag in 6" Maple
 82.78' NE to set P.K. and County Tag in 6" Elm



SEE ATTACHED SKETCH FOR ADDITIONAL INFORMATION.

Signed by Michael J. Rossow
 Surveyor's Michigan License No. 24615

Date May 13, 1994
 PA 345-1990
 PEER COMMITTEE
 APPROVED 5-20-94

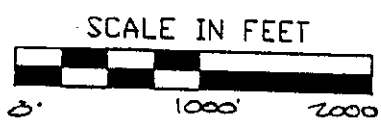
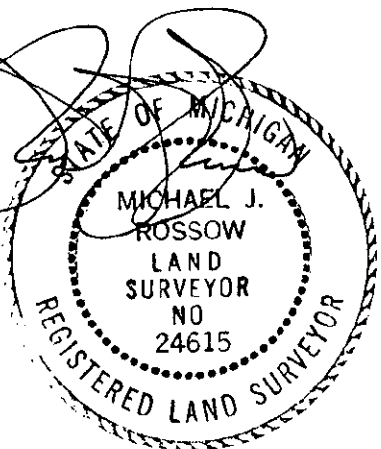
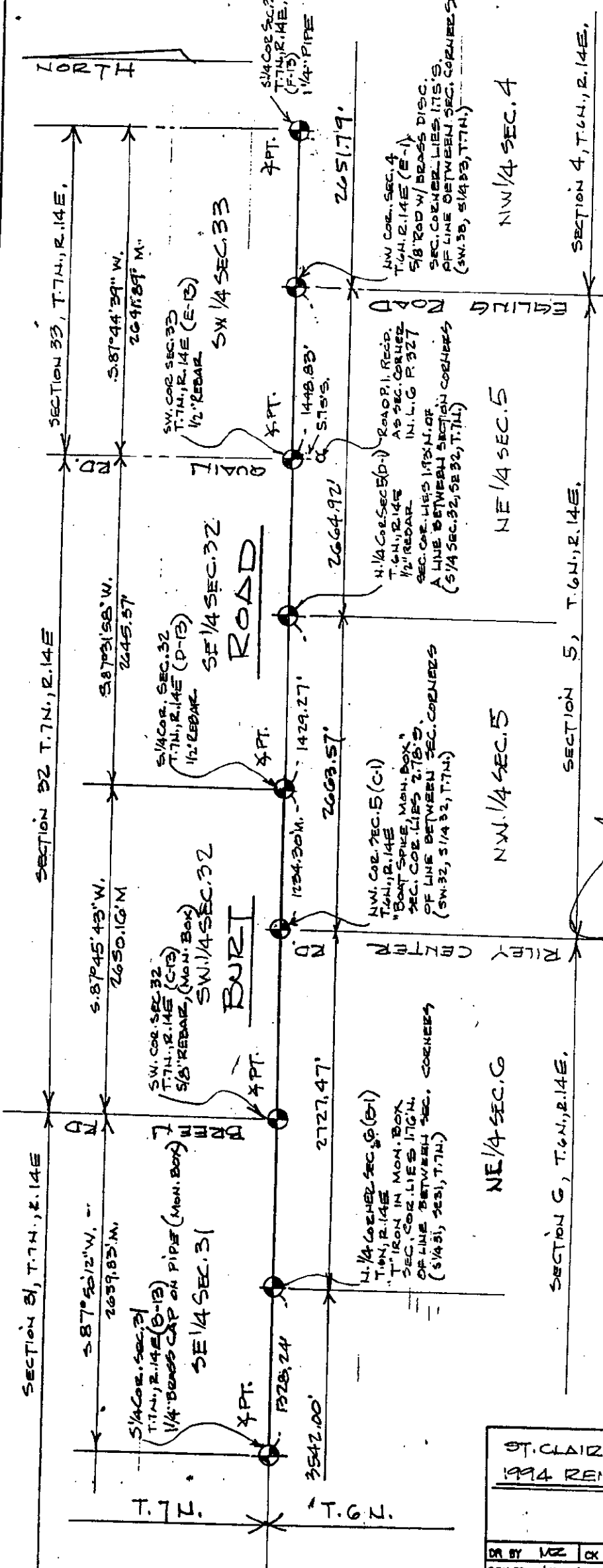
APPROVED AS AN OFFICIAL GOVERNMENT CORNER BY ST. CLAIR COUNTY:

Signed By: _____

St. Clair County Land Surveyor

Surveyor's Michigan License No. _____

LIBER 007 PAGE 343



LEGEND

O	SET IRON
●	FOUND IRON
M	RECORDED
R	MEASURED
C	CALCULATED
-x-x-	FENCE
*	GOVT. CORNER

ST. CLAIR COUNTY, MICHIGAN
1994 REMONUMENTATION PROGRAM

DR BY	MZ	CK BY	MZ	SHEET NO.	4	OF	SHEETS
SCALES		1" = 1000'		DATE	4-26-94		
T.R. VALENTINE & ASSOCIATES INC.				901 Huron Ave., Suite 8 Port Huron Michigan 48060 Consulting Engineers, Architects & Land Surveyors (313) 985-4848			
DWG NO.				TAB NO.	007 PAGE 344		

NOTE: ALL DISTANCES & ANGLES MEASURED ELECTRONICALLY