

RECEIVED

1994 SEP 20 PM 2:22

REGISTER OF DEEDS
ST. CLAIR COUNTY

ST. CLAIR COUNTY, MICHIGAN
OFFICIAL GOVERNMENT CORNER

LAND CORNER RECORDATION CERTIFICATE
Filing Requirement of Act 74, Mich. P.A. 1970



Located In: Corner Code #

1. Public Land Survey	T	7N	R	14E	E-13
	T		R		
	T		R		
	T		R		
2. Property Controlling in Section	S		T	R	Sec 1
	S		T	R	
3. Miscellaneous Property in Sec.	S		T	R	
	S		T	R	

Register of Deeds Stamp & File Number

4. Lot No. _____, Recorded Plat _____
5. Private Claims _____

Michael J. Rossow April 29, 1994

I, _____, in a field survey on _____, 19____, do hereby certify that under requirements of P.A. 74, Michigan P.A. of 1970, the corner points mentioned in lines 1 and 2 above were in conformance with regulations and rules therefore as required in the current manual of survey instructions of the United States Department of the Interior, Bureau of Land Management or by a decree of a Court of Law and/or that the corner points mentioned in lines 3, 4 and 5 above were in conformance with the rules of the Michigan Board of Land Surveyors or by a Decree of a Court of Law; established, re-established, monumented, re-monumented, recovered, found as expressed below:

NOTE: Not more than 1 corner, may be recorded on this certificate.

A. Description of original monument and accessories and/or subsequent restoration:

"Post" set for original corner (Gov. Survey).

St. Clair Co. Surveyors Record Calls For ("Large Stone").

Act 74 Cert. filed L.4,P.166 Identifies 1/2" pipe for corner.

Act 74 Cert. filed L.6,P.327 Identifies a different corner, which is St. Clair County Road Comm. road P.I.

B. Description of corner evidence found and/or method applied in restoring or reestablishing corner:

Found 1/2" Rebar per Act 74 Cert. L.4,P.166

C. Description of monument for corner and accessories established to perpetuate locating the position of the corner:

1/2" Rebar.

- 52.18' SW to set P.K. and County Tag in 24" Maple.
- 148.03' NNE to set P.K. and County Tag in 15" Hickory.
- 180.15' NNW to set P.K. and County Tag in 27" Oak
- 138.30' SE to set P.K. and County Tag in P.Pole

SEE ATTACHED SKETCH FOR ADDITIONAL INFORMATION.

Signed by Michael J. Rossow
Surveyor's Michigan License No. 24615

Date May 13, 1994
PA 345-1990
PEER COMMITTEE
APPROVED 5-20-94

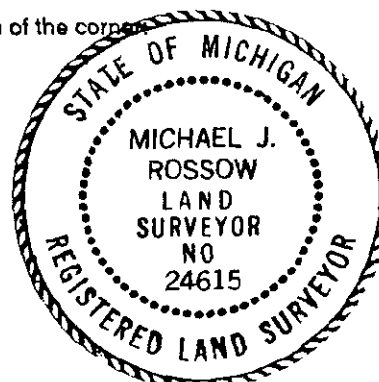
	A	B	C	D	E	F	G	H	I	J	K	L	M
2	6	5	4	3	2	1							
3													
4	7	8	9	10	11	12							
5													
6	18	17	16	15	14	13							
7													
8	19	20	21	22	23	24							
9													
10	30	29	28	27	26	25							
11													
12	31	32	33	34	35	36							
13													

STATE PLAIN COORDINATES

N. _____

E. _____

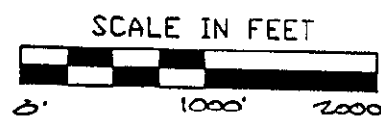
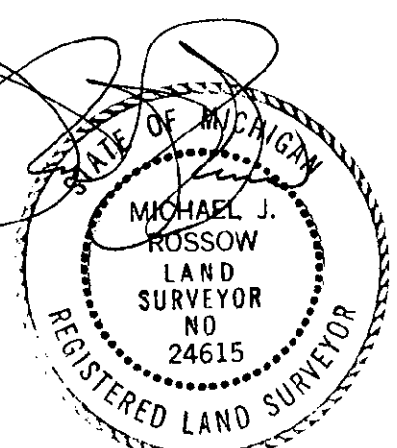
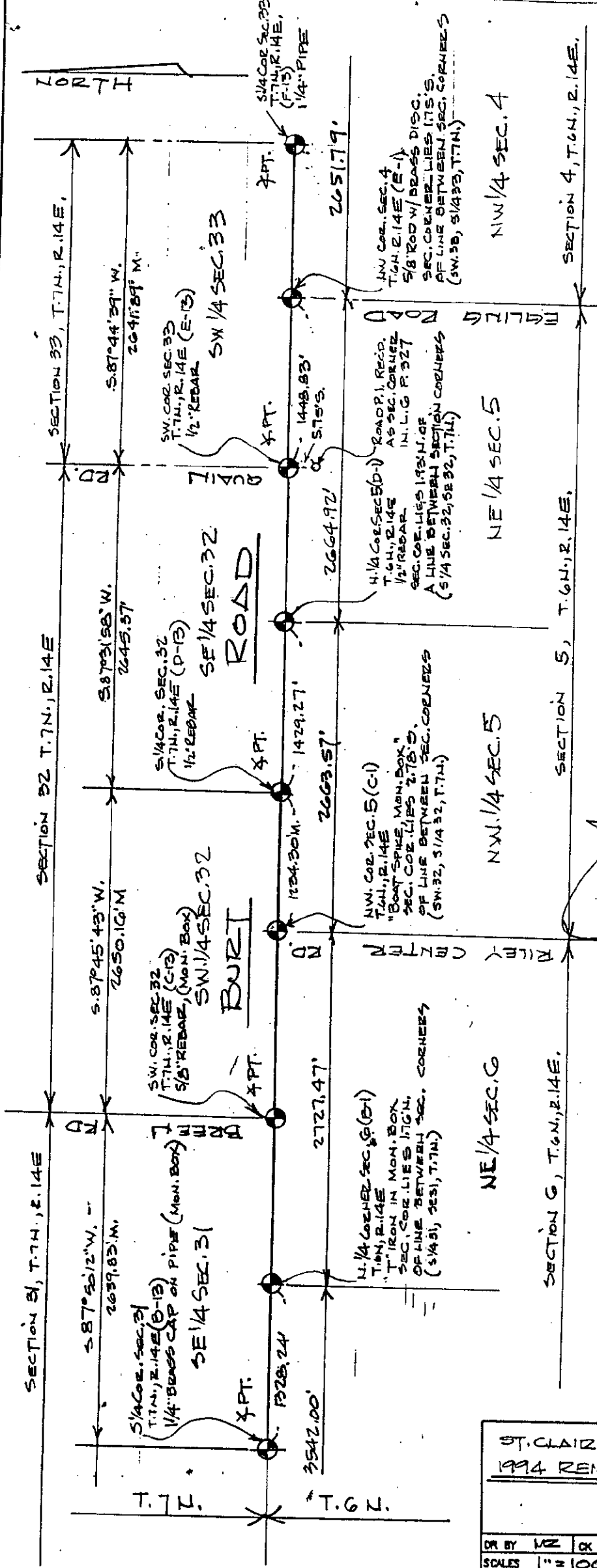
ELEVATION _____



APPROVED AS AN OFFICIAL GOVERNMENT CORNER BY ST. CLAIR COUNTY:

Signed By: _____ Date _____
St. Clair County Land Surveyor

Surveyor's Michigan License No. _____



LEGEND

O	SET IRON
●	FOUND IRON
R	RECORDED
M	MEASURED
C	CALCULATED
—x—x—	FENCE
—x—x—	GOVT. CORNER

ST. CLAIR COUNTY, MICHIGAN
 1994 REMONUMENTATION PROGRAM

DR BY	MZ	CK BY	MZ	SHEET NO.	4	OF	SHEETS
SCALE	1" = 1000'	DATE	4-26-94				
T.R. VALENTINE & ASSOCIATES INC. 901 Huron Ave., Suite 8 Consulting Engineers, Port Huron Michigan 48060 (313) 985-4848 Architects & Land Surveyors							
DWG NO.				JOB NO.	342		

NOTE: ALL DISTANCES & ANGLES MEASURED ELECTRONICALLY