

RECEIVED  
COMPLIMENT

1994 SEP 20 PM 2: 22

REGISTER OF DEEDS  
ST. CLAIR COUNTY

# ST. CLAIR COUNTY, MICHIGAN OFFICIAL GOVERNMENT CORNER



LAND CORNER RECORDATION CERTIFICATE  
Filing Requirement of Act 74, Mich. P.A. 1970

Located In: Corner Code #

1. Public Land Survey	T	7N	R	14E	F-13
	T		R		
	T		R		
	T		R		
2. Property Controlling in Section	S		T		R
	S		T		R
3. Miscellaneous Property in Sec.	S		T		R
	S		T		R

Register of Deeds Stamp & File Number

4. Lot No. \_\_\_\_\_, Recorded Plat \_\_\_\_\_  
5. Private Claims \_\_\_\_\_

Michael J. Rossow March 11, 94

I, \_\_\_\_\_, in a field survey on \_\_\_\_\_, 19\_\_\_\_, do hereby certify that under requirements of P.A. 74, Michigan P.A. of 1970, the corner points mentioned in lines 1 and 2 above were in conformance with regulations and rules therefore as required in the current manual of survey instructions of the United States Department of the Interior, Bureau of Land Management or by a decree of a Court of Law and/or that the corner points mentioned in lines 3, 4 and 5 above were in conformance with the rules of the Michigan Board of Land Surveyors or by a Decree of a Court of Law; established, re-established, monumented, re-monumented, recovered, found as expressed below:

NOTE: Not more than 1 corner, may be recorded on this certificate.

A. Description of original monument and accessories and/or subsequent restoration:

"Post set for original Govt. corner (G.L.O. Survey), p.156.

St. Clair Co. Surveyors Record Lists "1" Iron Pipe".

Act 74 Cert. filed L.4,P.149 & L.6,P.327.

List 1"pipe Lists Axle Shaft.

B. Description of corner evidence found and/or method applied in restoring or reestablishing corner:

Found 1 1/4"  $\phi$  pipe per Cert. filed L.4,P.149 & L.6,P.327.

C. Description of monument for corner and accessories established to perpetuate locating the position of the corner:

1 1/4"  $\phi$  pipe.

- 51.58' SSW to set P.K. and County Tag in P.Pole.
- 92.33' N to set P.K. and County Tag in 10" Apple
- 394.96' ESE to set P.K. and County Tag in P.Pole
- 551.48' WNW to set P.K. and County Tag in P.Pole

SEE ATTACHED SKETCH FOR ADDITIONAL INFORMATION.

Signed by Michael J. Rossow  
Surveyor's Michigan License No. 24615

Date May 13, 1994  
PA 345-1990  
PEER COMMITTEE  
APPROVED 5-20-94



APPROVED AS AN OFFICIAL GOVERNMENT CORNER BY ST. CLAIR COUNTY:

Signed By: \_\_\_\_\_  
St. Clair County Land Surveyor

Surveyor's Michigan License No. \_\_\_\_\_

LIBER 007 PAGE 339

	A	B	C	D	E	F	G	H	I	J	K	L	M
2	6	5	4	3	2	1							
3													
4	7	8	9	10	11	12							
5													
6	18	17	16	15	14	13							
7													
8	19	20	21	22	23	24							
9													
10	30	29	28	27	26	25							
11													
12	31	32	33	34	35	36							
13													

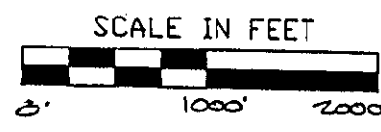
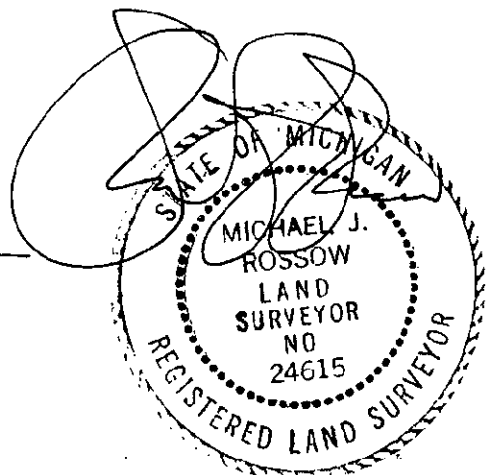
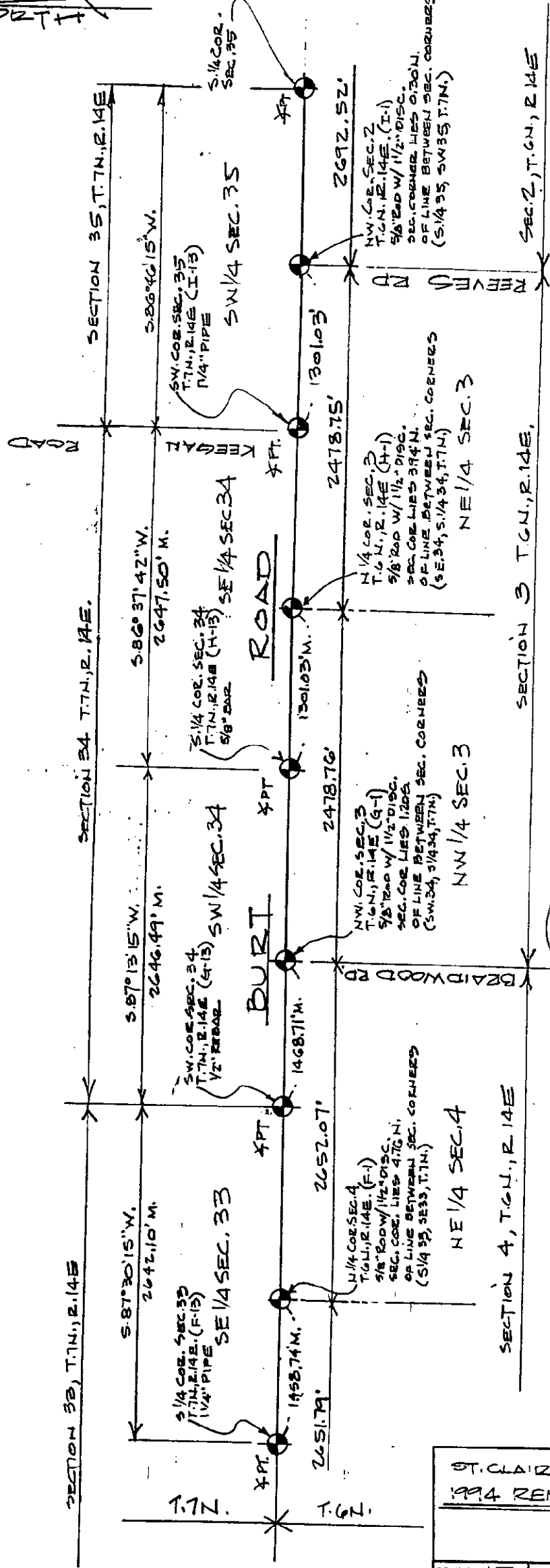
STATE PLAIN COORDINATES

N. \_\_\_\_\_

E. \_\_\_\_\_

ELEVATION \_\_\_\_\_

HORTH



LEGEND

O	SET IRON
●	FOUND IRON
○	RECORDED
M	MEASURED
C	CALCULATED
X-X	FENCE
X	GOVT. CORNER

ST. CLAIR COUNTY, MICHIGAN  
 1994 RECONUMENTATION PROGRAM

DR BY WZ CK BY MZ SHEET NO 3 OF        SHEETS  
 SCALES 1" = 1000' DATE 4-26-94

**T.R. VALENTINE & ASSOCIATES INC.** 901 Huron Ave., Suite B  
 Consulting Engineers, Port Huron Michigan 48060  
 Architects & Land Surveyors (313) 965-4848

NOTE: ALL DISTANCES & ANGLES  
 MEASURED ELECTRONICALLY