

**SURVEY & REMONUMENTATION**

JAN 22 1999

**SECTION**

**LAND CORNER RECORDATION CERTIFICATE**  
 Filing Requirement of Act 74, Mich. P.A. 1970

PAGE **107**

STATE OF MICHIGAN  
 ST. JOSEPH COUNTY  
 FILED

13 NOV 1998 10:32:40 AM

CYNTHIA L. JARRATT  
 REGISTER OF DEEDS

Register of Deeds Stamp & File Number

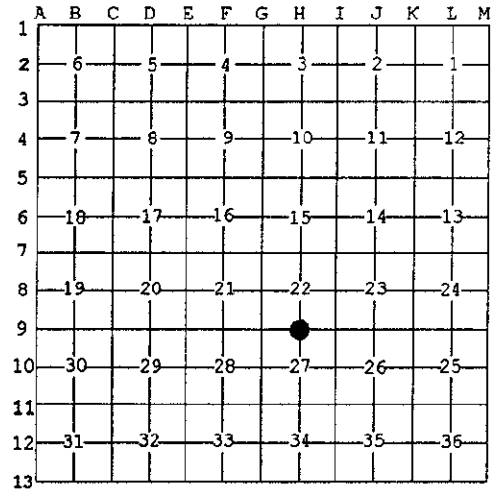
For corners in

<u>St. Joseph</u>	Located In:	Corner Code #
(County)		
Mendon Twp.		
1. Public Land Survey	T <u>5S</u> R <u>10W</u>	<u>H-9</u>
	T ___ R ___	___
	T ___ R ___	___
	T ___ R ___	___
2. Property Controlling in Section	S ___ T ___ R ___	___
	S ___ T ___ R ___	___
3. Miscellaneous Property in Sec.	S ___ T ___ R ___	___
	S ___ T ___ R ___	___

4. Lot No. \_\_\_\_\_, Recorded Plat \_\_\_\_\_  
 5. Private Claims \_\_\_\_\_

I, David W. Mostrom, in a field survey on Nov. 5, 1998 do hereby state that under requirements of P.A. 74, Michigan P.A. of 1970, the corner points mentioned in lines 1 and 2 above were in conformance with regulations and rules therefore as required in the current manual of survey instructions of the United States Department of the Interior, Bureau of Land Management or by a decree of a Court of Law and/or that the corner points mentioned in lines 3, 4 and 5 above were in conformance with the rules of the Michigan Board of Land Surveyors or by a Decree of a Court of Law, established, re-established, monumented, recovered, found as expressed below:

NOTE: Not more than 2 corners, all in the same town and range, may be recorded on this certificate.



A. Description of original monument and accessories and/or subsequent restoration:

(H-9) 1/4 Corner Common to Sections 22 & 27, T5S, R10W  
 \*GLO \*1876 Survey in Book A, Pg. 238  
 Set post on W. boundary Stone set by H. Hutchinson  
 of Indian Reserve 2 links from old bearings  
 South of Mile Post \*1960 Sayers Survey  
 6" B. Oak = N17°W 29.04' Found notched stone  
 8" Hickory = S42°W 22.44' 24" Maple = N40°E 41.65'  
 P. Pole = East 20.2'

\*1995 LCRC in Book A, Pg. 154  
 Notched stone in mon. box  
 28" maple = N35°E 42.40'  
 P. Pole = N37°W 42.40'  
 P. Pole = S88°E 20.57'  
 P. Pole = S60°W 89.60'

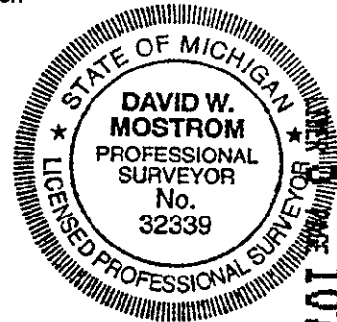
B. Description of corner evidence found and/or method applied in restoring or reestablishing corner:

Found notched stone in mon. box  
 30" Maple = N35°E 42.40'  
 P. Pole = N37°W 42.40'  
 P. Pole = S88°E 20.57'  
 P. Pole = S60°W 89.60'  
 Corner falls at proj. of centerline road to West  
 & in the North-South road centerline

RATIFIED BY PEER GROUP  
 IN ACCORDANCE WITH P.A. 345  
 ON Oct. 12, 1998  
Wm CO. REPRESENTATIVE

C. Description of monument for corner and accessories established to perpetuate locating the position of the corner:

5/8" X 24" Iron bar w/std. cap over notched stone in mon. box  
 N & W 1.0' high on E. side of 34" Maple = N40°E 42.40'  
 N & W 2.0' high on S. side of P. Pole = East 20.62'  
 N & W 2.0' high on N. side of P. Pole = S76°W 89.66'  
 N & W 1.0' high on NE side of P. Pole = N33°W 46.95'



Signed by David W. Mostrom  
 Surveyor's Michigan License No. 32339

Date November 9, 1998