

SURVEY & REMONUMENTATION

NOV 30 1993

COMMISSION

004 PG 014

LAND CORNER RECORDATION CERTIFICATE
Filing Requirement of Act 74, Mich. P.A. 1970

FILED

OCT 7 11 06 AM 1993

Register of Deeds
REGISTER OF DEEDS
ST. JOSEPH CO MICH

corners in

ST. JOSEPH
(County)

Located In:

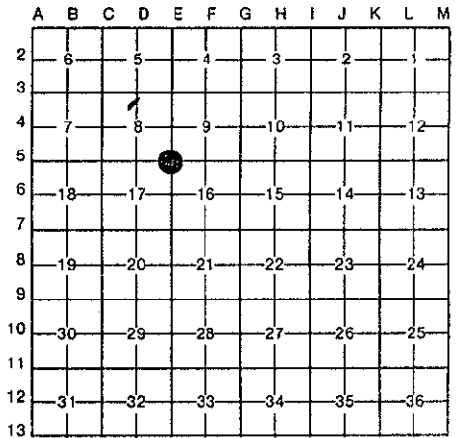
Corner Code #

Public Land Survey	T <u>5S</u> R <u>11W</u>	<u>E-5</u>
	T _____ R _____	_____
	T _____ R _____	_____
	T _____ R _____	_____
Property Controlling in Section	S _____ T _____ R _____	_____
Miscellaneous Property in Sec.	S _____ T _____ R _____	_____

Register of Deeds Stamp & File Number

Lot No. _____, Recorded Plat _____
Private Claims _____

WAYNE A. MOSTROM, in a field survey on SEPTEMBER 13, 1993, hereby certify that under requirements of P.A. 74, Michigan P.A. of 1970, the corner points mentioned lines 1 and 2 above were in conformance with regulations and rules therefore as required in the current manual of survey instructions of the United States Department of the Interior, Bureau of Land Management or by a decree of a Court of Law and/or that the corner points mentioned in lines 3, 4 and 5 above were in conformance with the rules of the Michigan Board of Land Surveyors or by a Decree of a Court of Law; established, re-established, monumented, re-monumented, recovered, found as expressed below:



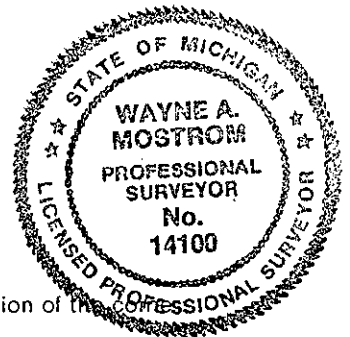
NOTE: Not more than 4 corners, all in the same town and range, may be recorded on this certificate.

Description of original monument and accessories and/or subsequent restoration:

<u>GLO</u>	<u>ROAD COMMISSION-1960'S</u>	<u>LCRC - 3/22 - 1974</u>
6" W.O.=S21°W 23 LKS	POINTED STONE IN MON. BOX OVER STAKE]	1" PIPE IN MON BOX
5" W.O.=N56½°E 50 LKS	16" B.O.=N59°W 45.55'	TREE = N60°W 44.72'
<u>1906 SURVEY BY REED</u>	AP=N2°W 25.78'	"X" ON EDGE IRON A.P.=S. 24.74'
POINTED STONE	NE COR. HSE=S13°W 86.79'	<u>INGERSOLL SURVEY - 1966</u>
3" HICK=S8°E 41½ LKS		FD. PIPE
8" ELM=S75°E 140 LKS		<u>1991 SURVEY BY GOVE ASSOC.</u>

Description of corner evidence found and/or method applied in restoring or reestablishing corner:

FD. 3/4" PIPE IN MON BOX OVER POINTED STONE	28" OAK=S5°E 23.41'
18" ELM = N40°E 30.37'	10" ELM=N40°E 30.43'
36" OAK = N50°W 44.37'	32" OAK=N50°W 44.31'
36" OAK = SOUTH 23.8'	



Description of monument for corner and accessories established to perpetuate locating the position of the

E-5 (COR COMMON TO SEC 8, 9, 16, 17)
STD. CAP ON 5/8" X 24" IRON BAR
N&W 18" HIGH ON NW SIDE 18" ELM = N40°E 30.37'
N&W 18" HIGH ON NE SIDE 36" OAK = N50°W 44.37'
N&W 18" HIGH ON S SIDE 20" OAK = N70°W 107.55'
N&W 18" HIGH ON W SIDE 36" OAK = SOUTH 23.80'
CENTERLINE OF PAVEMENT = SOUTH 1.0'

APPROVED BY PEER GROUP
SEPTEMBER 13, 1993 AS
PERPETUATION OF ORIGINAL
CORNER.

signed by Wayne A. Mostrom
Surveyor's Michigan License No. 14100

MISC. 7.00

Date SEPTEMBER 15, 1993